



3 Savile Row

Mayfair, London

PRIME HEAD
OFFICE & RETAIL
OPPORTUNITY

savills

Location

3 Savile Row is located in the heart of the capital's most exclusive district offering an occupier a unique opportunity to secure their presence among prestigious neighbours in a townhouse previously owned by the Beatles. Many will recall they played a concert, their last, on the roof of the building in 1969. The façade features a blue plaque to attest to this seminal moment and there is Beatles memorabilia on the upper floors. The building which dates back to 1733 was also home to Apple for many years.

Mayfair is one of the world's premier locations where the wealthy, fashionable and famous come to work, shop and be entertained. A diverse mix of streets and squares bringing together the absolute best from the worlds of fashion and fine jewellery, bespoke services, craftsmanship, art and antiques alongside fine hotels, bars, restaurants and destinations of global cultural significance. Mayfair has recently seen a number of high profile office lettings and developments as hedge fund and other marquee occupiers look to benefit from what the immediate area has to offer.

The grade II listed space arranged over 6 floors with roof terrace and the possibility for additional outside space offers a multitude of occupiers and uses an unparalleled opportunity steeped in history.





Accommodation

The building consists of the following areas;

Basement	2,787 sq ft
Ground Floor Retail	2,398 sq ft
First Floor Retail	2,503 sq ft
Second Floor Retail / Office	2,647 sq ft
Third Floor Office	1,848 sq ft
Fourth Floor Office	1,827 sq ft
Total	14,010 sq ft

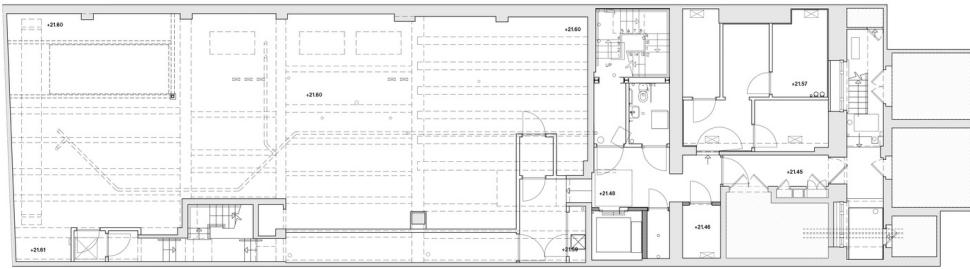
Rent

On Application.

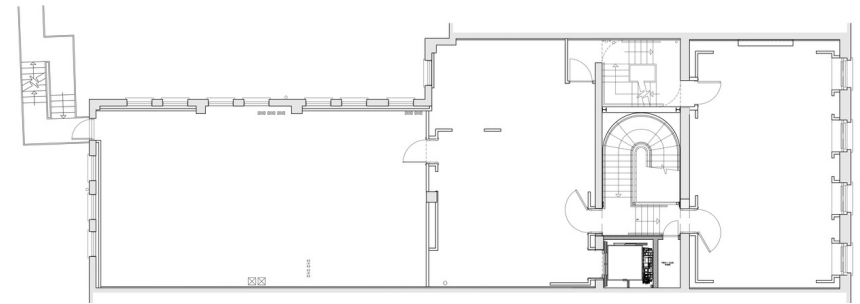
Description

3 Savile Row is an extremely rare opportunity, offering a prominent Mayfair location on one of London's most recognisable addresses. The unit has the ability to be taken as a whole townhouse or split into offices / retail. Restoration Hardware, the American lifestyle company, are due to open directly opposite 3 Savile Row in early 2025. This will enhance the location's desirability to members club, gallery, boutique hotel and office operators.

Basement



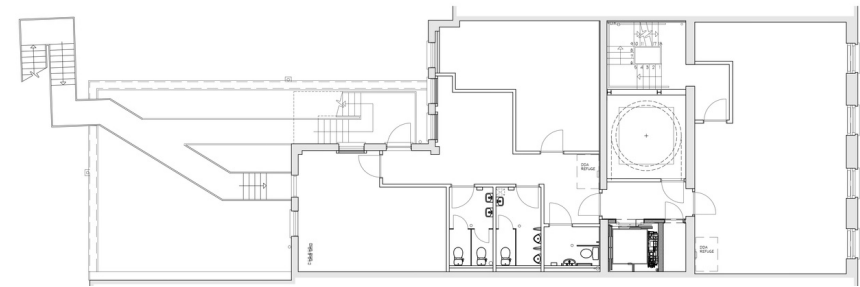
Second Floor



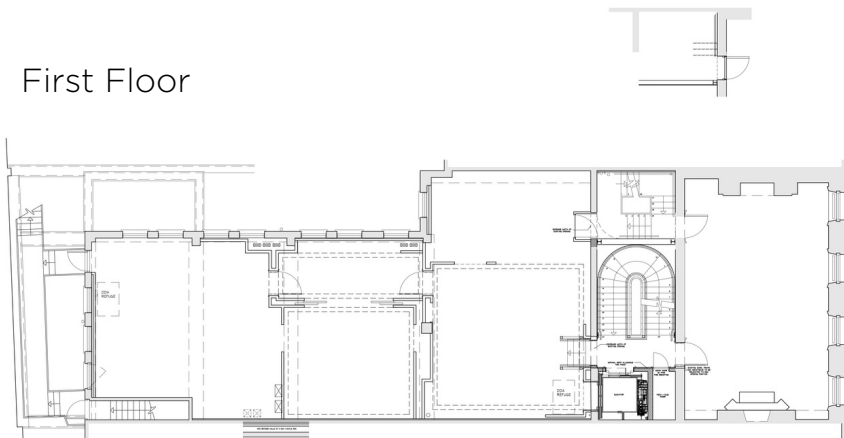
Ground Floor



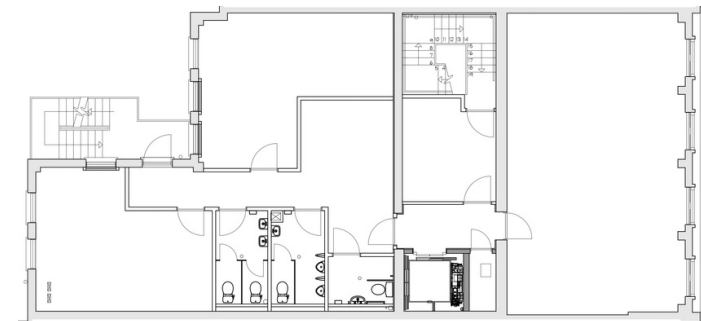
Third Floor



First Floor



Fourth Floor



CONTACTS

Brian Allen

Director

BMAllen@savills.com

+44 (0) 7972 000 215

Isaac Begley

Surveyor

Isaac.Begley@savills.com

+44 (0) 7890 427 842



IMPORTANT NOTICE

Maps are reproduced from the Ordnance Survey Map with the permission of the Controller of H.M. Stationery Office. © Crown copyright licence number 100022432 Savills (UK) Ltd, published for the purposes of identification only and although believed to be correct accuracy is not guaranteed. Savills, their clients and any joint agents give notice that:

1. They are not authorised to make or give any representations or warranties in relation to the property either here or elsewhere, either on their own behalf or on behalf of their client or otherwise. They assume no responsibility for any statement that may be made in these particulars. These particulars do not form part of any offer or contract and must not be relied upon as statements or representations of fact.

2. Any areas, measurements or distances are approximate. The text, photographs and plans are for guidance only and are not necessarily comprehensive. It should not be assumed that the property has all necessary planning, building regulation or other consents and Savills have not tested any services, equipment or facilities. Purchasers must satisfy themselves by inspection or otherwise.