



**65  
CHANDOS  
PLACE  
WC2**

**2,173 - 5,658 SQ FT**

**FULLY FITTED**

**PLUG AND PLAY**

**OFFICE SPACE**

**COVENT GARDEN**



# A NEW ARRIVAL

65 Chandos Place is a striking building in the heart of Covent Garden, offering 2,173 - 5,658 sq ft of plug and play office space. A newly remodelled manned reception gives an exceptional first impression. A design-led space with modern details, it features two passenger lifts leading to the office floors with excellent natural light.





3rd floor breakout



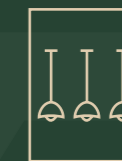
3rd floor workspace



# HIGHLIGHTS



Excellent location  
in Covent Garden



Remodelled  
arrival experience



Manned  
reception



Great floor-to-  
ceiling height



New shower  
facilities



Exposed  
services



Excellent  
natural light



New bike racks



# AVAILABILITY

FLOOR	CONDITION	SQ FT	SQ M
3RD	FITTED	3,485	323.8
LOWER GROUND	FITTED	2,173	201.9
TOTAL		5,658	525.7



Lower ground breakout area



3rd floor breakout area



Lower ground workspace



3rd floor meeting room



Lower ground breakout



# FRESH FOR WORK

The building's brand new end-of-trip facilities ensure that everyone reaches the office feeling refreshed. They include attractive changing rooms and spacious showers, with bike storage and lockers to keep belongings secure and out of mind.



Changing rooms



Showers



Lockers & bike racks



# LOWER GROUND

2,173 SQ FT / 201.9 SQ M

- 21 x Desks
- 1 x Teapoint
- 3 x Breakout spaces
- 1 x 6-person meeting room
- 1 x 8-person meeting room
- 1 x Phone booth
- 1 x End-of-trip facilities
- 21 x Lockers



CHANDOS PLACE

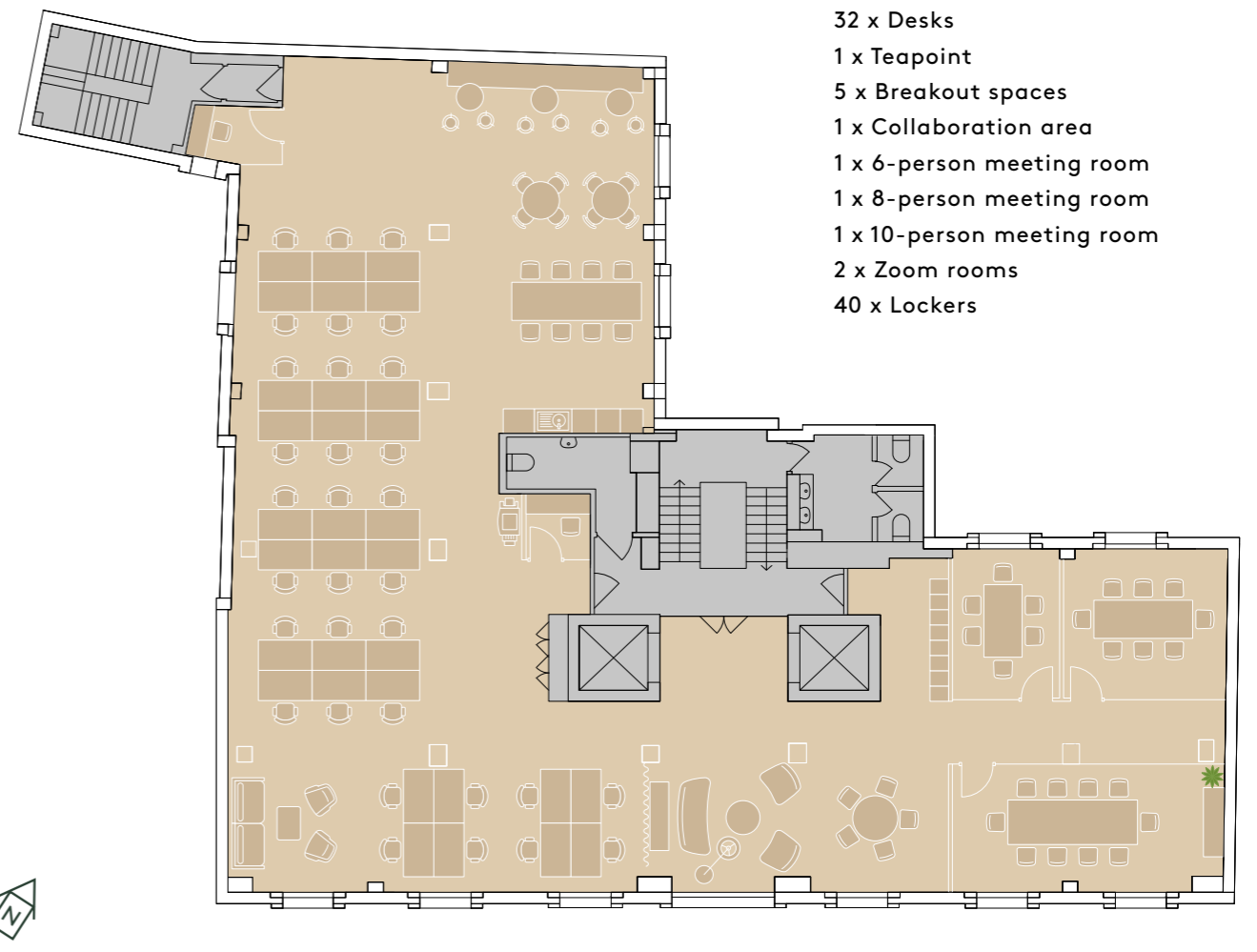
Office space
  Core
  Showers
  Lockers & bike racks
  Lightwell



# 3RD FLOOR

3,485 SQ FT / 323.8 SQ M

- 32 x Desks
- 1 x Teapoint
- 5 x Breakout spaces
- 1 x Collaboration area
- 1 x 6-person meeting room
- 1 x 8-person meeting room
- 1 x 10-person meeting room
- 2 x Zoom rooms
- 40 x Lockers



CHANDOS PLACE

Office space
  Core



# COOL COVENT GARDEN

65 Chandos Place could not be better positioned to make the most of what Covent Garden has to offer. Elegant restaurants and high-quality retail abound, including Barrafina, The Ivy, Petersham Nurseries, Paul Smith and Ralph Lauren. Transport connections are excellent: Charing Cross is a 3 minute walk away, and Embankment, Covent Garden and Leicester Square stations within a 5 minute walk.







# COVENT GARDEN

# LEICESTER SQUARE

# CHANDOS PL

# CHARING CROSS

# EMBANKMENT



COVENT GARDEN MARKET

VICTORIA EMBANKMENT GARDENS

RIVER THAMES

The Ivy

Hawksmoor

Royal Opera House

The Delaunay

Dishoom

Paul Smith

SUSHISAMBA

Balthazar

Ole & Steen

Petersham Nurseries

Ladurée

ME London



Polo Ralph Lauren

The Ivy Market Grill

Tequila Mockingbird

STK Steakhouse

Burger & Lobster

The Oystermen

Ole & Steen

LSQ Rooftop

Sticks'n'Sushi

Somerset House

LEICESTER SQUARE

Ave Mario

Gordon Ramsay Street Burger

Savoy Grill

St Martin's Lane Hotel

Caravan Coffee

The Savoy

The Marquis

Black Sheep Coffee

Coco di Mama

National Portrait Gallery

Barrafina

Smith & Wollensky

The Portrait

Tandoor Chop House

The Terrace

The National Gallery

TRAFALGAR SQUARE

Gougi





# PLEASE CONTACT



---

**Guy Milne**

[gmilne@hanovergreen.co.uk](mailto:gmilne@hanovergreen.co.uk)  
07775 897 919

**George Brewster**

[gbrewster@hanovergreen.co.uk](mailto:gbrewster@hanovergreen.co.uk)  
07745 606 874

---

**Kate Miedzianowska-Sinclair**

[kate.msinclair@savills.com](mailto:kate.msinclair@savills.com)  
07790 923 878

**Freddie Corlett**

[fcorlett@savills.com](mailto:fcorlett@savills.com)  
07870 555 842

Important notice relating to the Misrepresentation Act 1967 and the Property Misdescriptions Act 1991: (i) the particulars are set out as a general outline only for guidance of intending purchasers or lessees and do not constitute, nor constitute part of, an offer or contract (ii) all descriptions, dimensions, references to condition and necessary permission for use and occupation, and other details are given in good faith and are believed to be correct, but any intending purchasers or occupiers should not rely on them as statements or representations of fact, but must satisfy themselves by inspection or otherwise as to the correctness of each of them. February 2024.

Design and production: [www.stuartchapmandesign.co.uk](http://www.stuartchapmandesign.co.uk) 020 3983 1665