



3 Garden Terrace Yoxford Road, Sibton

Guide Price £315,000





3 Garden Terrace Yoxford Road

Sibton, Saxmundham

This immaculate three-bedroom end-of-terrace home located in the heart of the desirable and picturesque village of Sibton.

Council Tax band: B

Tenure: Freehold

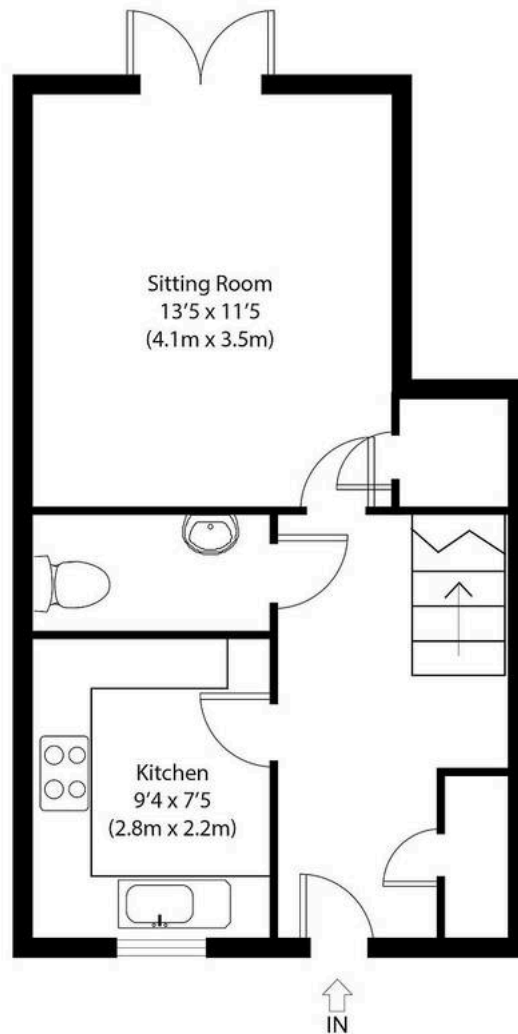
EPC Energy Efficiency Rating: B

EPC Environmental Impact Rating: B

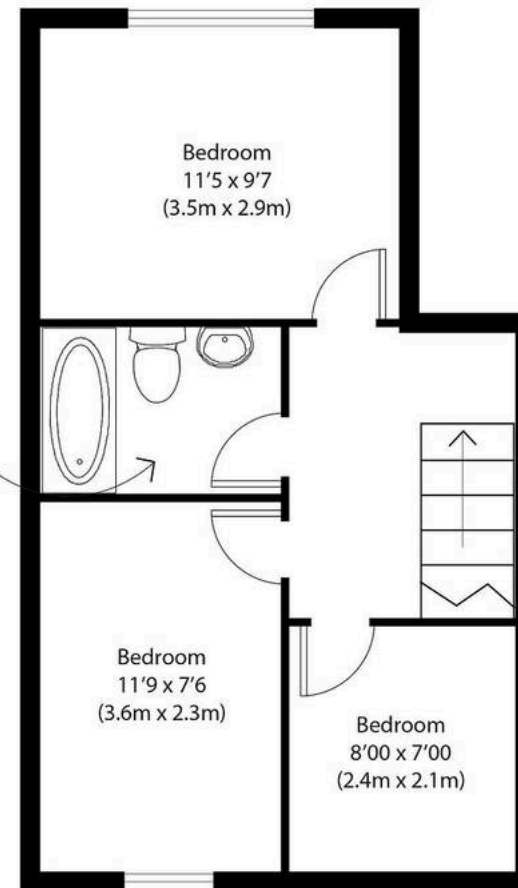
- Charming Village Location
- Move-In Ready Condition
- Three Well-Proportioned Bedrooms
- Contemporary Family Bathroom & Downstairs WC
- Air source Heating
- Rear Garden
- Allocated Off-Road Parking for Two Vehicles
- Proximity to Coast & Local Amenities







Ground Floor



First Floor

Approximate Gross Internal Area
715 sq ft (66 sq m)

Disclaimer: Floorplan measurements are approximate and are for illustrative purposes only. While we do not doubt the floor plan accuracy and completeness, you or your advisors should conduct a careful, independent investigation of the property in respect of monetary valuation. copyright www.pottershausgroup.co.uk





Potters Estate Agents

Potters Estate Agents, 6 Market Hill - IP12 4LU

01394 447487 • enquiries@pottersestateagents.com • www.pottersestateagents.com/