



10 Oak Hill, Hollesley
Woodbridge

Guide Price **£415,000**



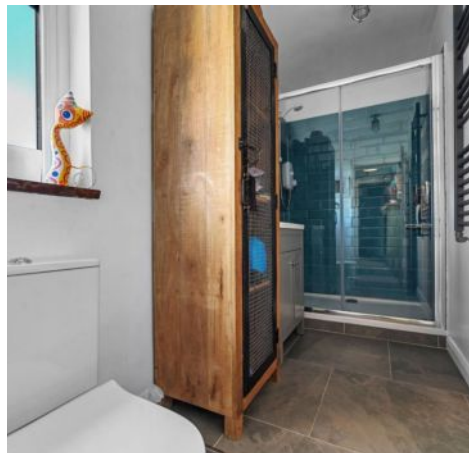
10 Oak Hill

Hollesley, Woodbridge

Situated in a sought-after cul-de-sac within the charming village of Hollesley, this large semi-detached home offers generous living space, modern comforts, and a wonderful outlook over a communal green. The property comes with a private strip of land on the green, enhancing its appeal and providing an attractive setting for residents.

The ground floor boasts an inviting reception hall leading to a front sitting room with a wood-burning stove, perfect for cosy evenings. A second reception/snug features an additional fireplace, adding to the home's character. The spacious dining room flows seamlessly into a bright conservatory, overlooking the well-maintained garden. The modern kitchen is fitted with stylish wooden worktops, while a separate downstairs shower room offers convenience for family living.

Upstairs, the property comprises four well-proportioned bedrooms, including a main bedroom with fitted cupboards for ample storage. The rear bedrooms enjoy delightful sea views, adding to the home's charm. A modern family bathroom with a separate WC serves the upper level.



10 Oak Hill

Hollesley, Woodbridge

Externally, the home benefits from plenty of off-road parking on the driveway, a detached garage, and multiple outbuildings, including a studio, workshop, and a bar/entertainment room—perfect for those needing additional leisure or workspace.

The property is equipped with oil central heating, ensuring comfort throughout the year.

Hollesley is a highly desirable village, offering a friendly community atmosphere, scenic countryside walks, and convenient access to Woodbridge and the Suffolk coast.

This exceptional home presents a rare opportunity to acquire a spacious and versatile property in a fantastic location. Viewing is highly recommended.

Nestled in the heart of the Suffolk Coast & Heaths Area of Outstanding Natural Beauty, Hollesley is a charming and sought-after village offering a perfect balance of rural tranquillity and convenient access to local amenities. Just a short drive from the historic market town of Woodbridge, Hollesley is ideal for those seeking a peaceful countryside lifestyle while remaining well-connected.

The village boasts a welcoming community with a popular local pub, The Shepherd & Dog, a well-regarded primary school, and a convenience store with a post office for everyday essentials. For those who enjoy the outdoors, Thorpeness and Aldeburgh are within easy reach, while Shingle Street's unspoilt coastline offers stunning walks along the Suffolk Heritage Coast. Nearby Rendlesham Forest provides a haven for nature lovers, walkers, and cyclists.





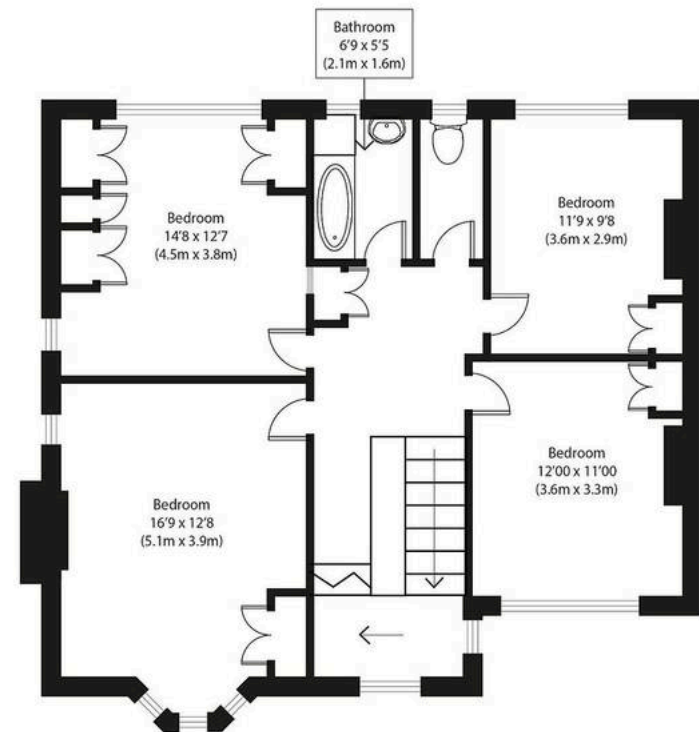


Ground Floor

Approximate Gross Internal Area
Main House 1940 sq ft (180 sq m)
Outbuildings (Excluding Garage) 475 sq ft (44 sq m)
Total 2415 sq ft (224 sq m)

Disclaimer: Floorplan measurements are approximate and are for illustrative purposes only. While we do not doubt the floor plan accuracy and completeness, you or your advisors should conduct a careful, independent investigation of the property in respect of monetary valuation. copyright www.photohausgroup.co.uk

Potters



First Floor



Potters Estate Agents

Potters Estate Agents, 6 Market Hill - IP12 4LU

01394 447487

enquiries@pottersestateagents.com

www.pottersestateagents.com/