



Aspen Lodge, Clopton
Woodbridge

Guide Price **£1,100,000**



Aspen Lodge

Clopton, Woodbridge

A rare sanctuary of space, style & seclusion – A lifestyle masterpiece in the countryside

Hidden behind handsome timber gates and approached via a long private drive, this extraordinary five- (potentially six-) bedroom residence occupies a secluded 1.7-acre plot in idyllic countryside. Designed for flexible living and absolute privacy, it's a true sanctuary for families, professionals, creatives, and entertainers alike.

This elegant detached residence offers nearly all of its accommodation on the ground floor, making it as practical as it is impressive. The property features five well-proportioned bedrooms, including an exceptional principal suite with a vast dressing room and luxury bathroom. An impressive vaulted drawing room with a wood-burning stove creates a dramatic yet welcoming focal point, while the contemporary kitchen-breakfast room—complete with a grand central island and granite worktops—offers the perfect space for family gatherings and entertaining.



Aspen Lodge

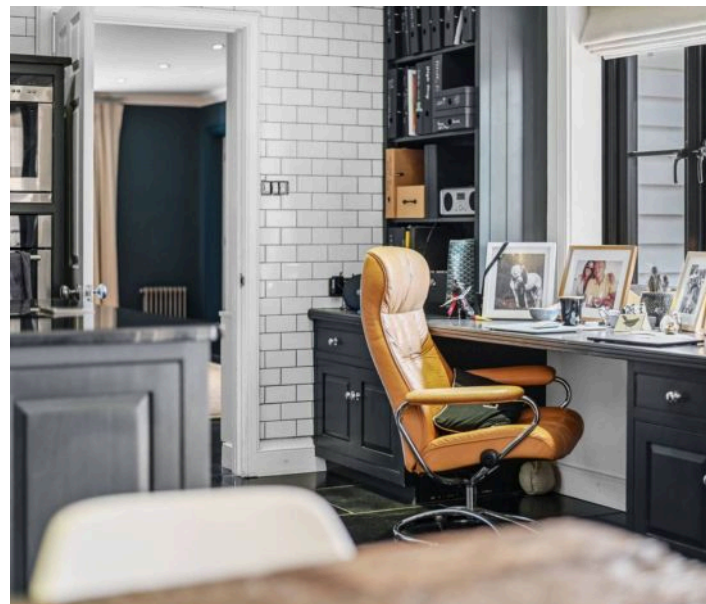
Clopton, Woodbridge

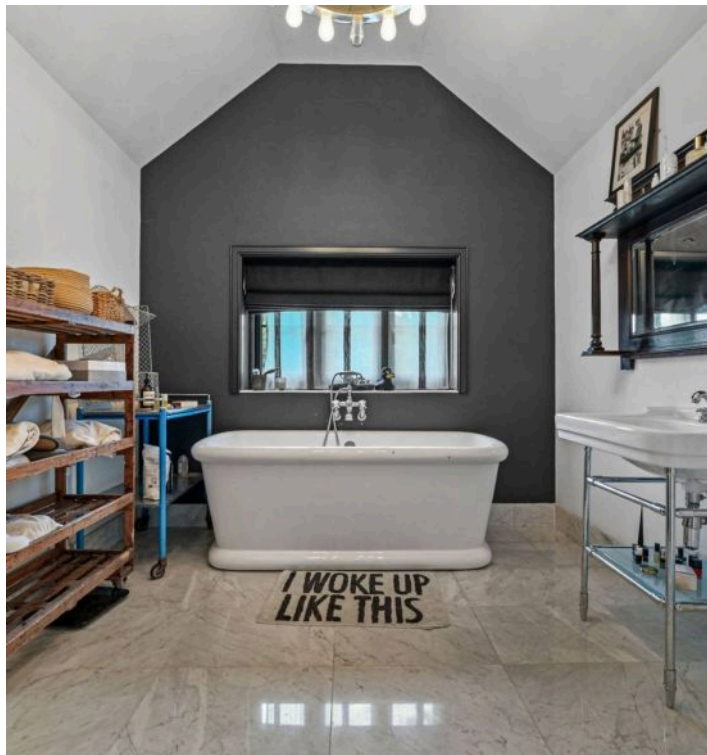
Beyond the core living spaces, you'll find a snug, a study, and a private guest suite that's ideal for visitors or multigenerational living. A separate garden office provides the perfect work-from-home setup, and there's even a Swedish sauna with an outdoor cold-water shower—an indulgent feature you may never want to part with.

The feeling of escape begins at the gate. With no hint of what lies beyond, the approach reveals a home nestled deep within its land, sheltered by mature trees and extensive lawns. Here, tranquillity is a way of life—interrupted only by birdsong or the occasional deer passing by.

Originally built in the 1980s and extended over time, the home now spans almost 3,500 square feet. It's laid out primarily over a single level in a series of wings unified by New England-style white boarding. While there are two upper-level rooms, the property functions beautifully as a spacious, stylish bungalow—offering all the advantages of single-storey living without compromise.

The entrance hall opens directly into the vaulted drawing room, a striking space where brilliant white walls and a polished black wood floor enhance the light and sense of scale. Floor-to-ceiling garden views blur the lines between indoors and out, and in colder months, the underfloor heating and wood-burning stove create a cosy retreat. Above, a mezzanine-level office overlooks the room—an inspiring place to work from home.





Aspen Lodge

Clopton, Woodbridge

Tucked off the main living area, a generously sized en-suite bedroom sits slightly apart from the others, making it a perfect guest suite or private space for a live-in relative or teenager. The layout offers genuine flexibility depending on your needs.

At the heart of the home is the kitchen-diner, a truly convivial space where traditional painted units meet sleek black granite worktops. A large central island invites sociable cooking, and white metro tiles define the cooking area with timeless style. French doors open out to a west-facing courtyard, where you can dine alfresco as the evening sun dips below the trees.



To the rear, a long wing contains the family room—a relaxed secondary space—along with two more bedrooms (one currently used as a gym), a utility room, and a sleek shower room. A staircase from here leads to an attic bedroom with skylights and cleverly integrated storage.

On the other side of the house, the principal suite is a sanctuary in its own right. With a vaulted ceiling, triple-aspect garden views, and a calming atmosphere, it's the sort of bedroom you'll never want to leave. The adjoining bathroom is luxurious in scale, and the current dressing room could easily be repurposed as an additional bedroom if needed.

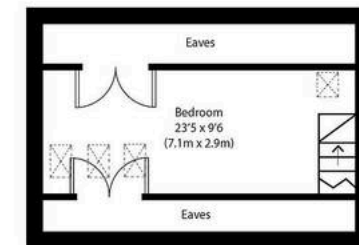
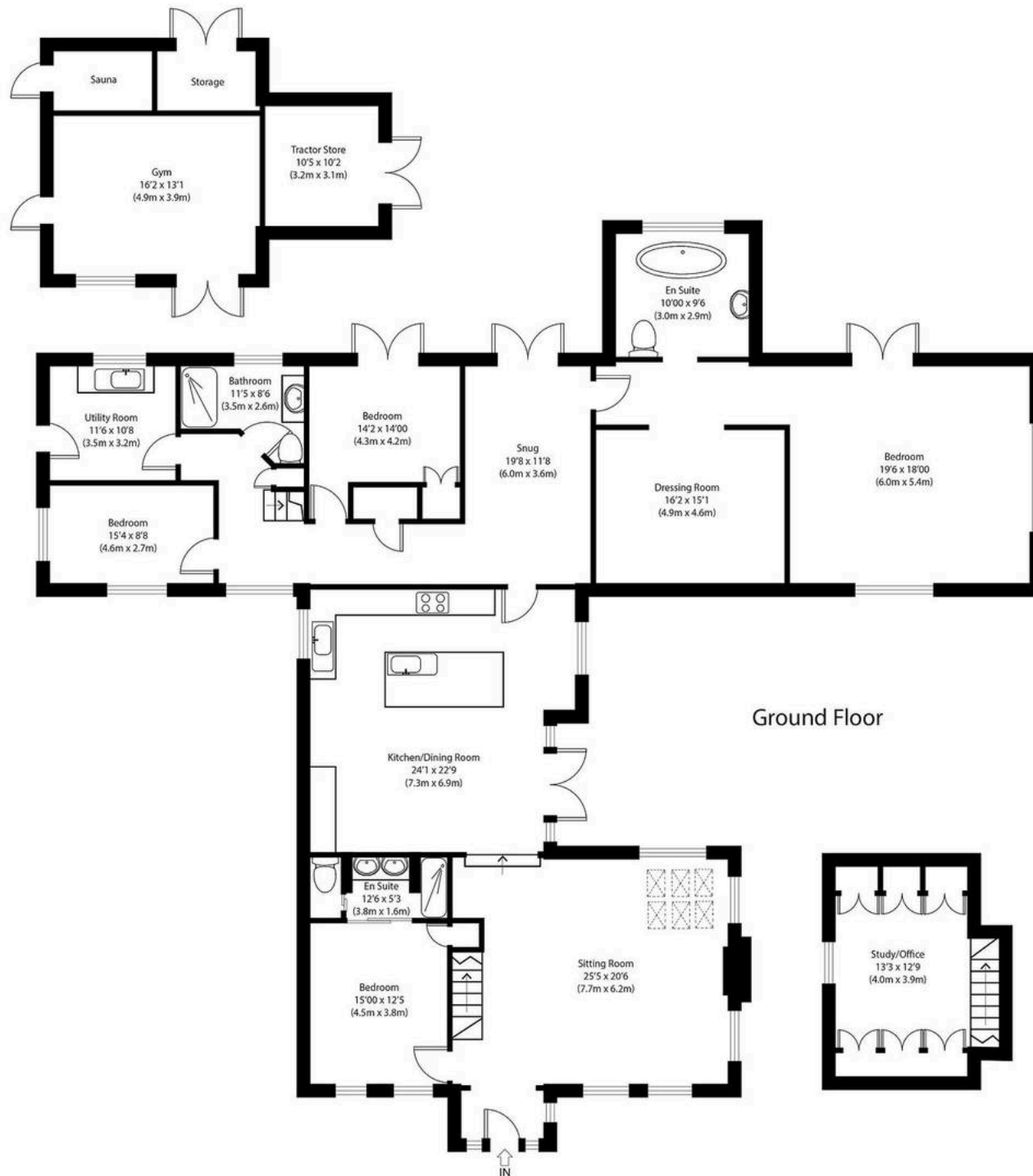
Aspen Lodge

Clopton, Woodbridge

A short distance from the house is a beautifully matching outbuilding. Inside, a large garden studio or home office with glass doors provides an ideal creative or professional workspace. The adjoining cart lodge houses garden equipment, while the former log store has been transformed into a fully functioning Swedish sauna. Complete with an outdoor cold-water shower, it's a unique wellness feature that perfectly complements the calm, retreat-like quality of the home.

The garden has a tranquil, parkland feel, simply landscaped with expansive lawns punctuated by mature trees. Though the boundaries are cleverly obscured, the entire plot is securely enclosed—an ideal space for children or pets to roam safely. The sun moves around the home throughout the day, but the west-facing courtyard is a particularly delightful spot to unwind on a warm evening.





Approximate Gross Internal Area
 Main House 3520 sq ft (327 sq m)
 Outbuilding 390 sq ft (36 sq m)
Total 3910 sq ft (363 sq m)

Disclaimer: Floorplan measurements are approximate and are for illustrative purposes only. While we do not doubt the floor plan accuracy and completeness, you or your advisors should conduct a careful, independent investigation of the property in respect of monetary valuation. copyright www.photohausgroup.co.uk

Potters



Potters Estate Agents

Potters Estate Agents, 6 Market Hill – IP12 4LU

01394 447487 • enquiries@pottersestateagents.com • www.pottersestateagents.com/