



## Vine Cottage Wickham Market Road, Charsfield

Guide Price £695,000







## Vine Cottage Wickham Market Road

Charsfield, Woodbridge

Grade II listed Suffolk pink detached residence in Charsfield village. Over 4 acres of private grounds, original features.

Council Tax band: F

Tenure: Freehold

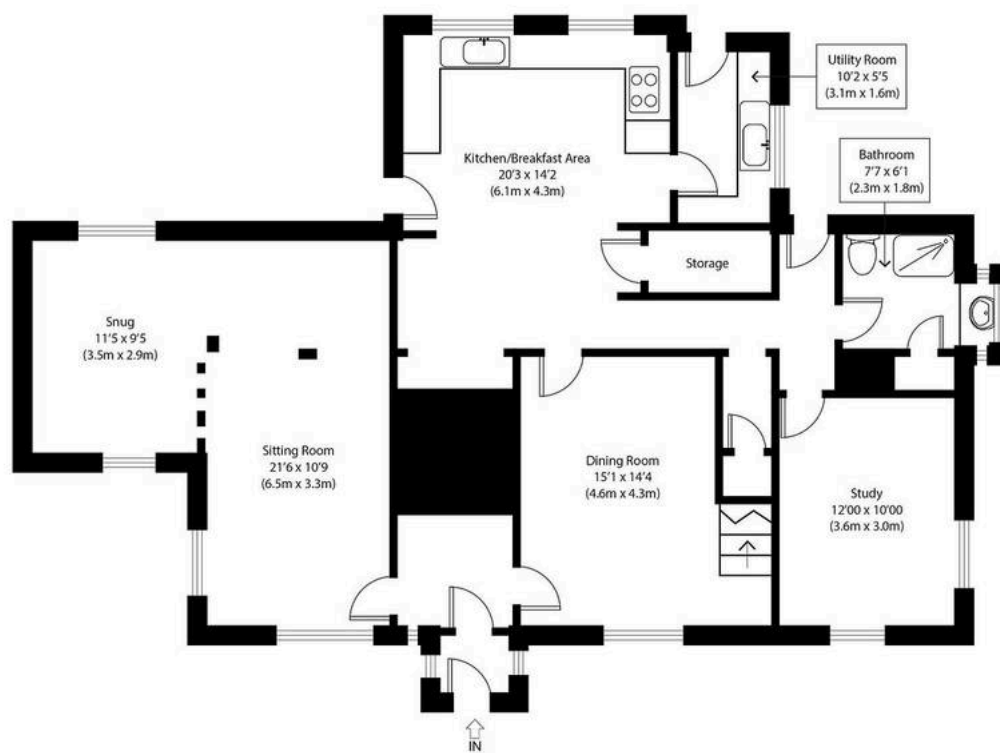
- Charming Grade II Listed Suffolk Pink Residence
- Set on Approximately Four Acres
- Over 2,200 sq ft of Versatile Living Space
- Original Period Features Throughout
- Spacious Kitchen/Breakfast Room
- Multiple Reception Areas
- Five Bedrooms & Three Bathrooms
- Detached Garage & Sweeping Driveway
- Former Orchard and Mature Gardens
- Desirable Suffolk Village Location



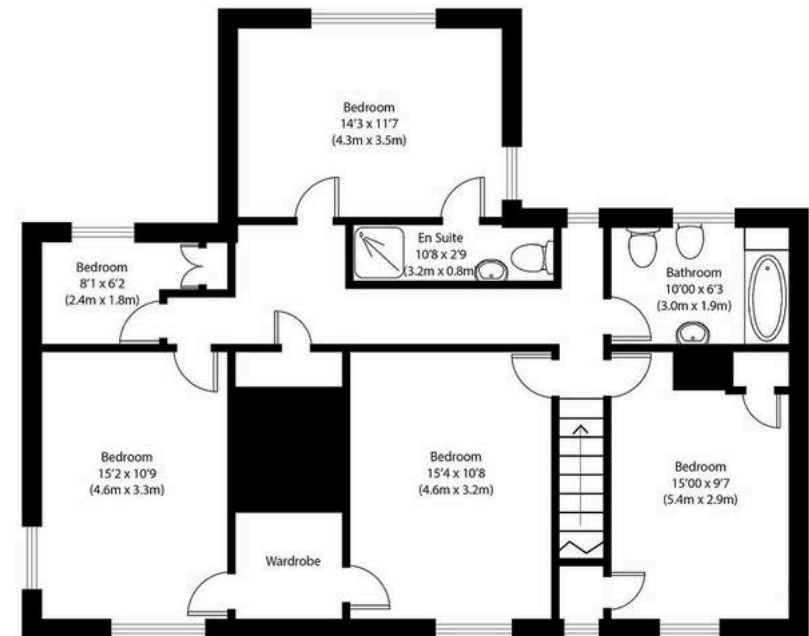








Ground Floor



First Floor

Approximate Gross Internal Area  
2210 sq ft (205 sq m)

Disclaimer: Floorplan measurements are approximate and are for illustrative purposes only. While we do not doubt the floor plan accuracy and completeness, you or your advisors should conduct a careful, independent investigation of the property in respect of monetary valuation.  
copyright www.photohausgroup.co.uk





## Potters Estate Agents

Potters Estate Agents, 6 Market Hill - IP12 4LU

01394 447487 • [enquiries@pottersestateagents.com](mailto:enquiries@pottersestateagents.com) • [www.pottersestateagents.com/](http://www.pottersestateagents.com/)