



Vine Cottage Wickham Market Road, Charsfield
Woodbridge

Guide Price **£695,000**



Vine Cottage Wickham Market Road

Charsfield, Woodbridge

Nestled in the heart of the Suffolk countryside in the charming village of Charsfield, this enchanting Grade II listed timber-framed residence features colour-washed Suffolk pink render and a traditional pantile roof, offering an extraordinary opportunity to acquire a home of rare character set within approximately four acres of idyllic and private grounds. The property features timber windows that perfectly complement its historic façade.

Brimming with historic charm, the house showcases a wealth of original features including chamfered beams and joists internally, as well as traditional fireplaces. The accommodation extends to over 2,200 sq ft, offering generous and versatile spaces. A spacious kitchen/breakfast room serves as the heart of the home, flowing into a formal dining room with stunning brick flooring, a wood-burning stove, and a fireplace. A large sitting room, also with a wood-burning stove, extends to a snug – ideal as a reading area or a perfect spot for a piano – making the home perfect for both everyday living and entertaining. Additional ground floor spaces include a study, utility room, and shower room, all presented with timeless appeal.



Vine Cottage Wickham Market Road

Charsfield, Woodbridge

Upstairs, five comfortable bedrooms are complemented by two bathrooms, one of which is en-suite to the principal bedroom. Each room enjoys tranquil views across the gardens and wider grounds.

Outside, the property sits peacefully set back from the road, with a detached garage and sweeping driveway.

The gardens are particularly special — part of the land was once an orchard, now offering a delightful sense of heritage and a charming backdrop for outdoor living. Mature trees, open lawns, and secluded corners create an idyllic parkland setting, rich with potential for landscaping, cultivation, or simply enjoying the serenity of this rural haven. This is a truly special home for those seeking timeless beauty, space, and the romance of the Suffolk countryside in the sought-after village of Charsfield.

Charsfield is a quintessential English village nestled in the beautiful Suffolk countryside, offering a peaceful and welcoming community atmosphere.

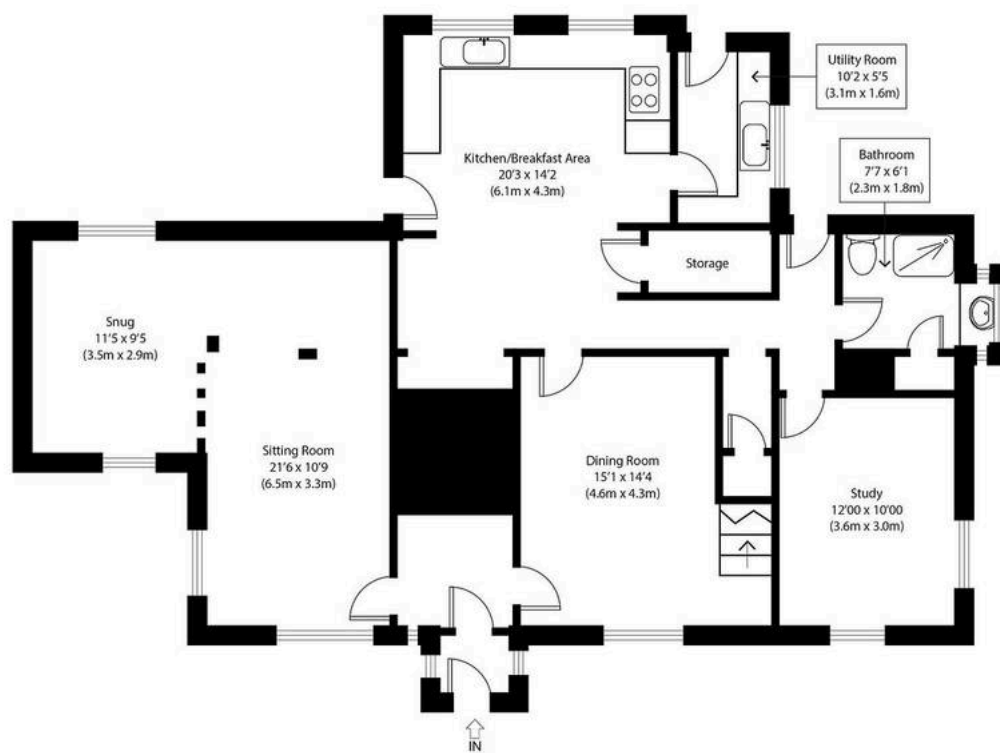
The village itself boasts a strong sense of history and community, featuring traditional Suffolk architecture and several well-preserved historic buildings. Local amenities include a highly regarded primary school and a village hall that hosts regular events, providing a social hub for residents. For daily conveniences and a wider range of shops, nearby market towns such as Woodbridge and Framlingham are just a short drive away.

Charsfield appeals to those who value tranquility and outdoor living, with numerous opportunities for cycling, horse riding, and countryside exploration right on the doorstep. Its combination of rural charm, community spirit, and accessibility to larger towns makes it an ideal location for families, professionals, and retirees alike.

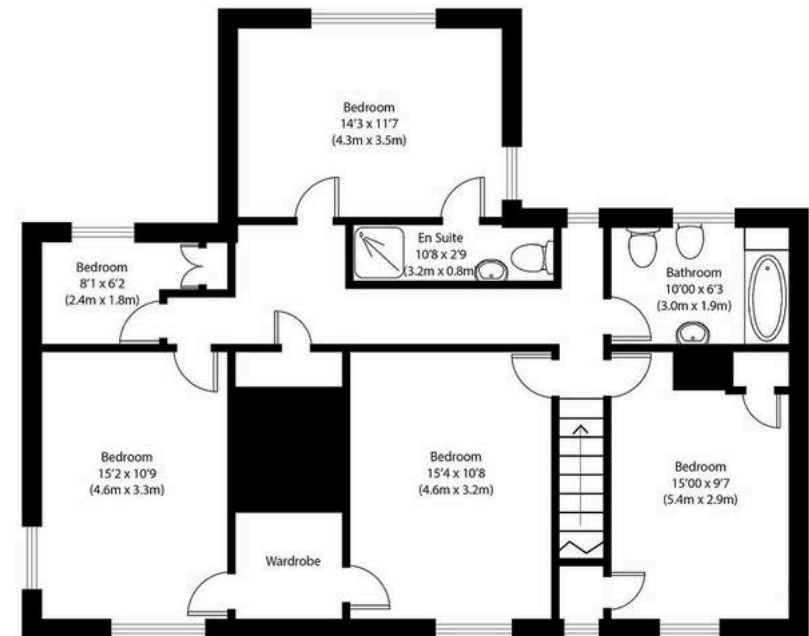
In summary, Charsfield offers buyers a rare chance to enjoy authentic village life in Suffolk — a peaceful, scenic setting with a strong community feel and excellent access to both nature and essential amenities.







Ground Floor



First Floor

Approximate Gross Internal Area
2210 sq ft (205 sq m)

Disclaimer: Floorplan measurements are approximate and are for illustrative purposes only. While we do not doubt the floor plan accuracy and completeness, you or your advisors should conduct a careful, independent investigation of the property in respect of monetary valuation.
copyright www.photohausgroup.co.uk



Potters Estate Agents

Potters Estate Agents, 6 Market Hill – IP12 4LU

01394 447487

enquiries@pottersestateagents.com

www.pottersestateagents.com/