



5 Swallows Close, Hollesley

Guide Price £375,000





5 Swallows Close

Hollesley, Woodbridge

A delightful four bedroom detached family home located in the heart of Hollesley, a well-regarded village with access to local amenities, open countryside, and the beautiful Suffolk coastline. Council Tax band: D

Tenure: Freehold

EPC Energy Efficiency Rating: D

EPC Environmental Impact Rating:

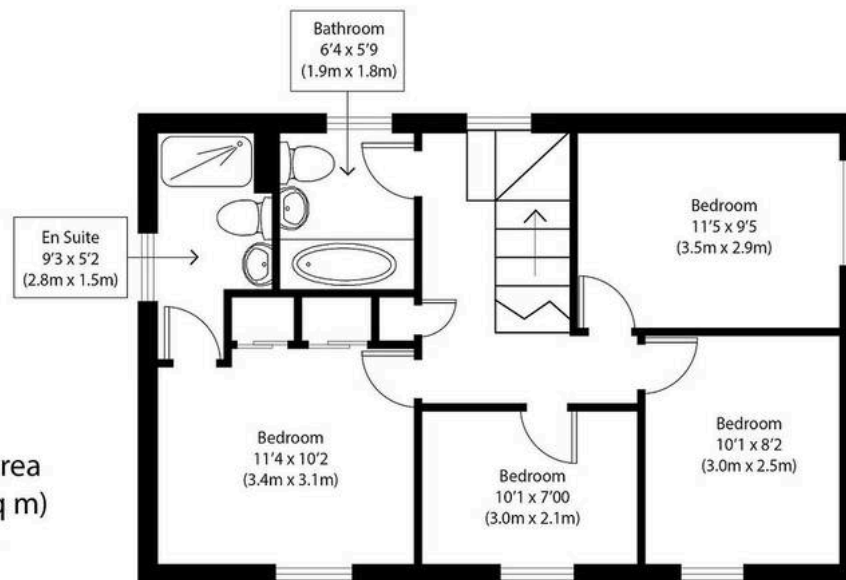
- Detached family house



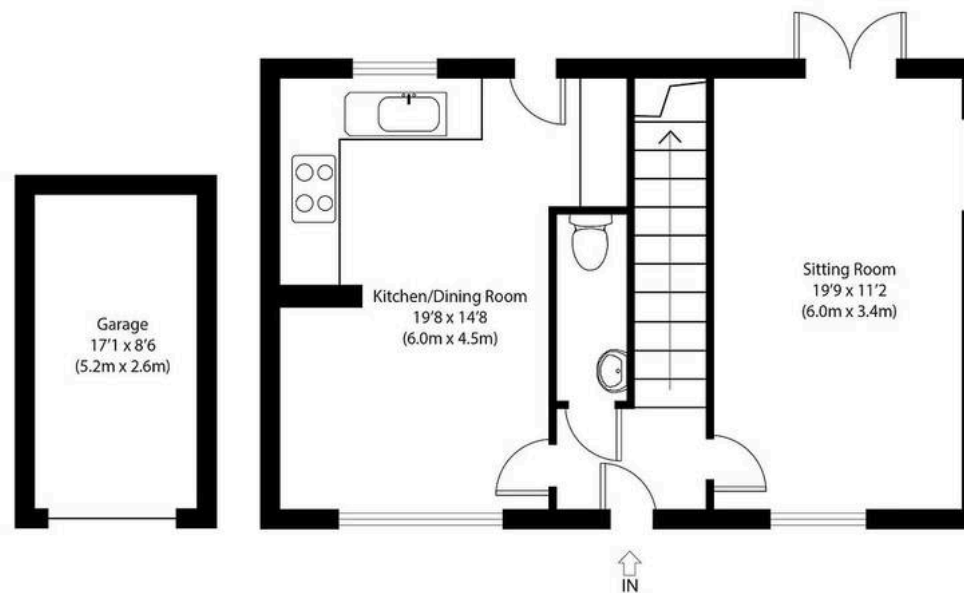


Approximate Gross Internal Area
Main House 1180 sq ft (110 sq m)
Garage 145 sq ft (13 sq m)
Total 1325 sq ft (123 sq m)

Disclaimer: Floorplan measurements are approximate and are for illustrative purposes only. While we do not doubt the floor plan accuracy and completeness, you or your advisors should conduct a careful, independent investigation of the property in respect of monetary valuation. copyright www.photohausgroup.co.uk



First Floor



Ground Floor



Potters Estate Agents

Potters Estate Agents, 6 Market Hill - IP12 4LU

01394 447487 • enquiries@pottersestateagents.com • www.pottersestateagents.com/