



Willow Croft Old Ipswich Road, Claydon

Guide Price £475,000





Willow Croft Old Ipswich Road

Claydon, Ipswich

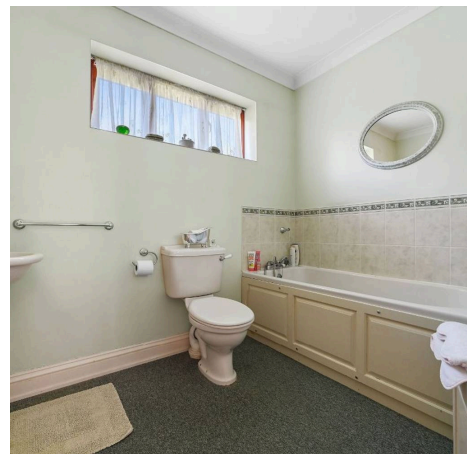
A four bedroom detached house, built in 2001 in the village of Claydon. Located in a non-estate position, this property offers exceptionally spacious accommodation.

Council Tax band: E

Tenure: Freehold

EPC Energy Efficiency Rating: C

EPC Environmental Impact Rating: C

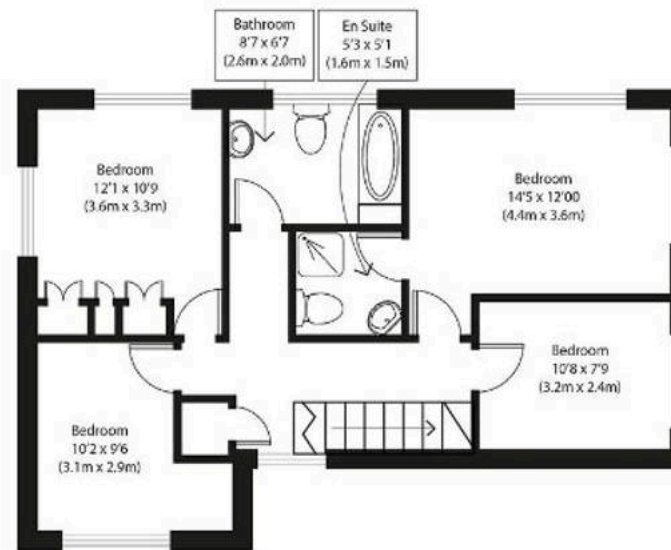




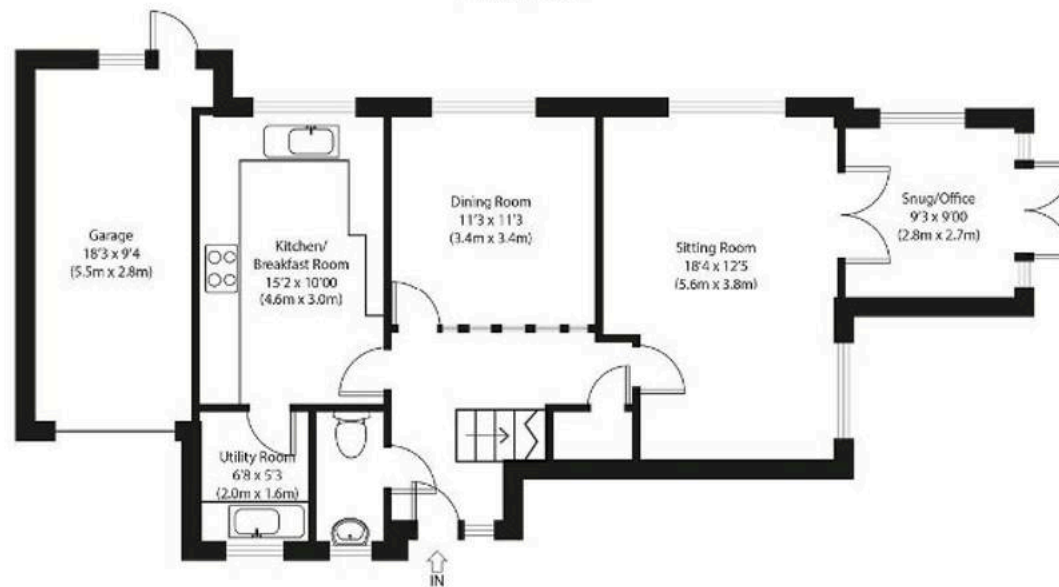


Approximate Gross Internal Area 1600 sq ft (149 sq m)

Disclaimer: Floorplan measurements are approximate and are for illustrative purposes only. While we do not doubt the floor plan accuracy and completeness, you or your advisors should conduct a careful, independent investigation of the property in respect of monetary valuation.
copyright www.photohausgroup.co.uk



First Floor



Ground Floor



Potters Estate Agents

Potters Estate Agents, 6 Market Hill – IP12 4LU

01394 447487 • enquiries@pottersestateagents.com • www.pottersestateagents.com/