



1 Beaconsfield Road, Woodbridge

Guide Price £395,000





1 Beaconsfield Road

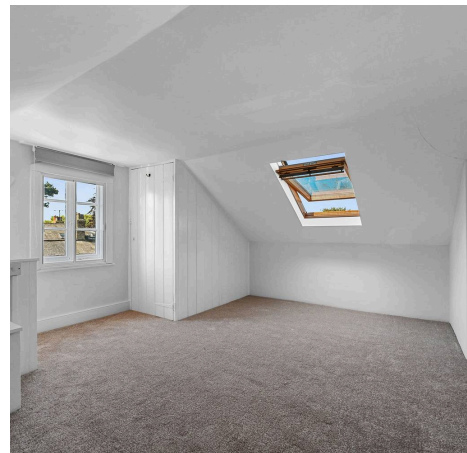
Woodbridge, Woodbridge

A delightful three-bedroom Victorian end-terraced house beautifully combines period features with modern comforts. Situated on the highly sought-after Beaconsfield Road. Council Tax band: C

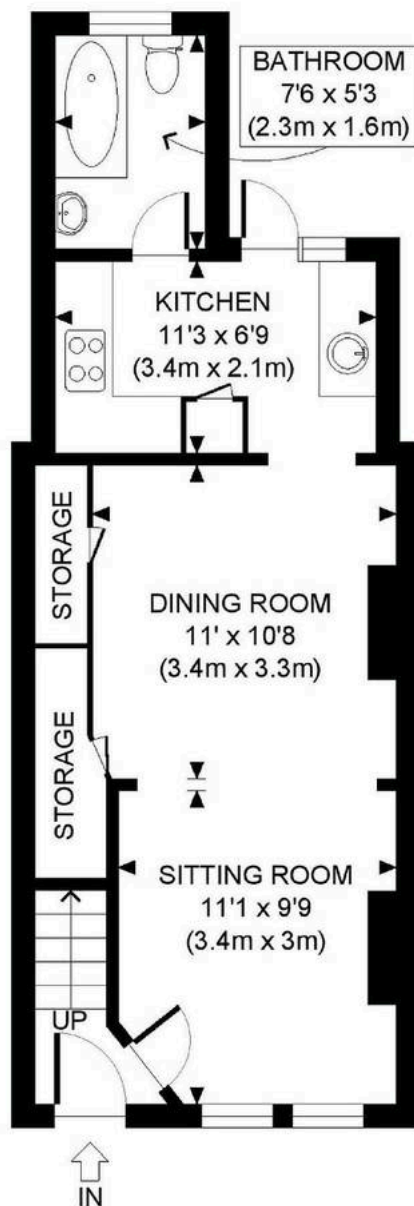
Tenure: Freehold

EPC Energy Efficiency Rating: E

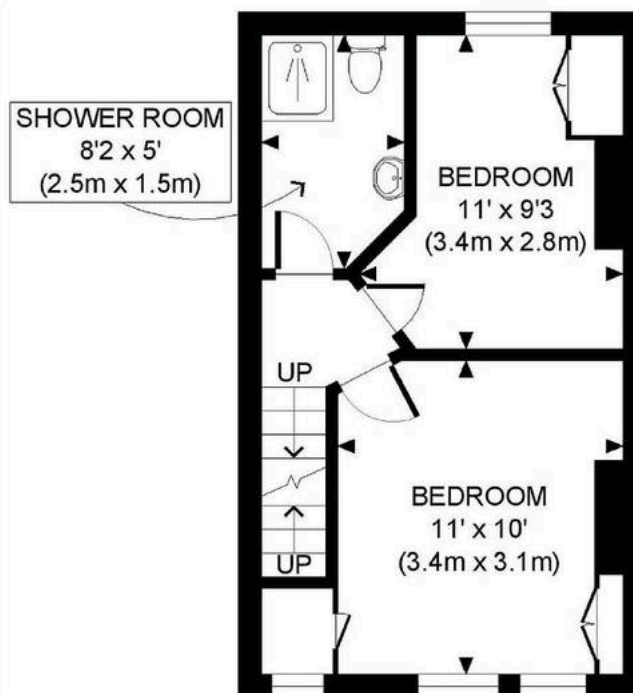
EPC Environmental Impact Rating: E



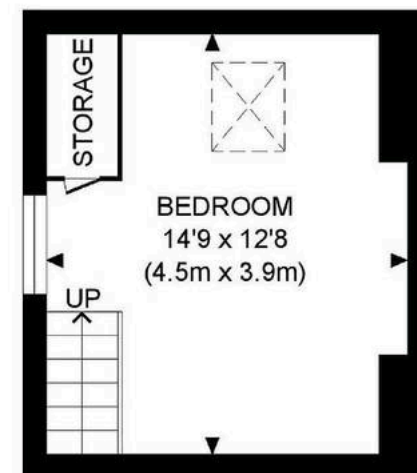




GROUND FLOOR
GROSS INTERNAL
FLOOR AREA 406 SQ FT



FIRST FLOOR
GROSS INTERNAL
FLOOR AREA 284 SQ FT



SECOND FLOOR
GROSS INTERNAL
FLOOR AREA 187 SQ FT

Approximate Gross Internal Area 877 sq ft (81 sq m)

Disclaimer: Floorplan measurements are approximate and are for illustrative purposes only. While we do not doubt the floor plan accuracy and completeness, you or your advisors should conduct a careful, independent investigation of the property in respect of monetary valuation. copyright www.photohausgroup.co.uk





Potters Estate Agents

Potters Estate Agents, 6 Market Hill - IP12 4LU

01394 447487 • enquiries@pottersestateagents.com • www.pottersestateagents.com/