



3 Waterloo Mews, Leiston

Offers in Region of £288,000





3 Waterloo Mews

Leiston, Leiston

An end of terrace four bedroom home, located in a cul-de-sac location striking distance to the Town.

Council Tax band: C

Tenure: Freehold

EPC Energy Efficiency Rating: C

EPC Environmental Impact Rating: C



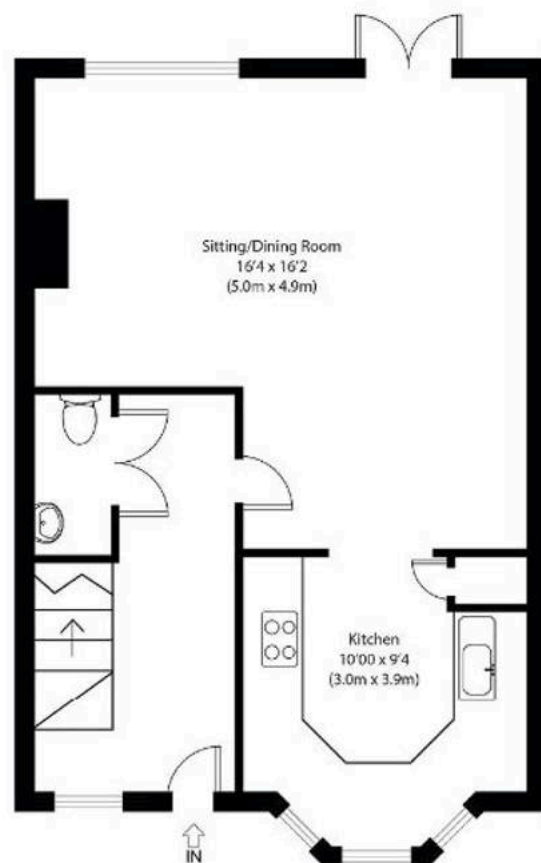




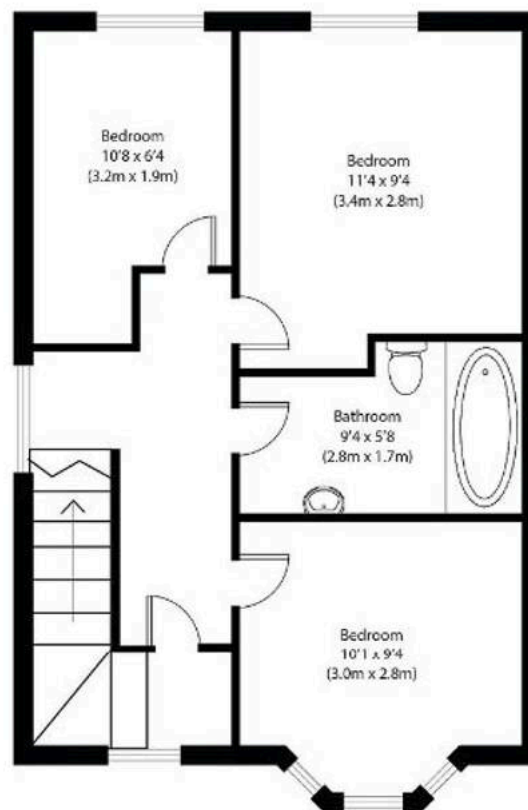
Approximate Gross Internal Area 1110 sq ft (103 sq m)

Disclaimer: Floorplan measurements are approximate and are for illustrative purposes only. While we do not doubt the floor plan accuracy and completeness, you or your advisors should conduct a careful, independent investigation of the property in respect of monetary valuation. copyright: www.photocallgroup.co.uk

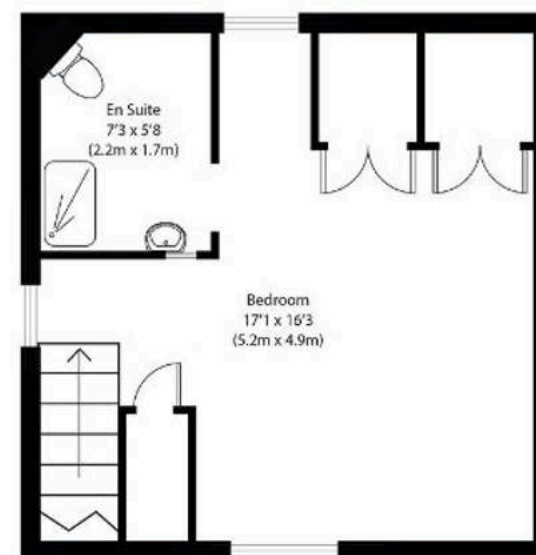
Potters



Ground Floor



First Floor



Second Floor



Potters Estate Agents

Potters Estate Agents, 6 Market Hill – IP12 4LU

01394 447487 • enquiries@pottersestateagents.com • www.pottersestateagents.com/