



25 Warren Lane, Martlesham Heath

Guide Price **£375,000**





25 Warren Lane

Martlesham Heath, Ipswich

Deceptively spacious three bedroom three-storey townhouse, situated in one of Martlesham Heath's most desirable roads.

Council Tax band: C

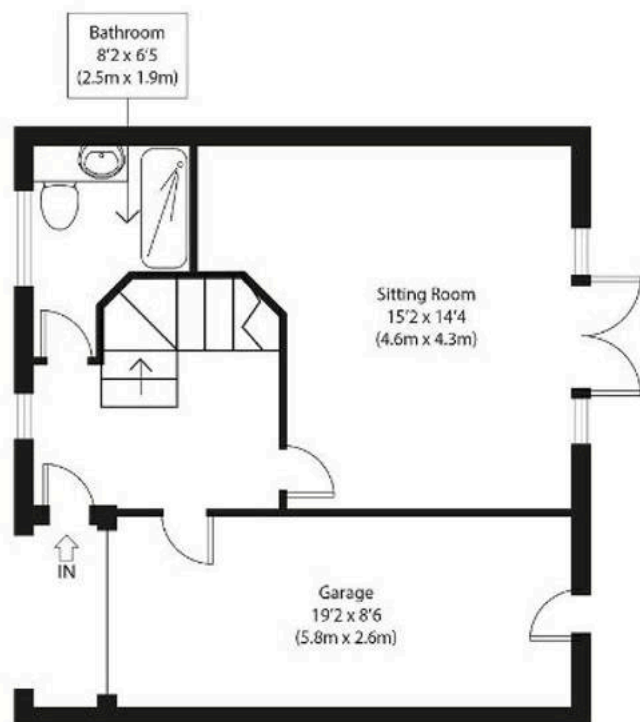
Tenure: Freehold

EPC Energy Efficiency Rating: D

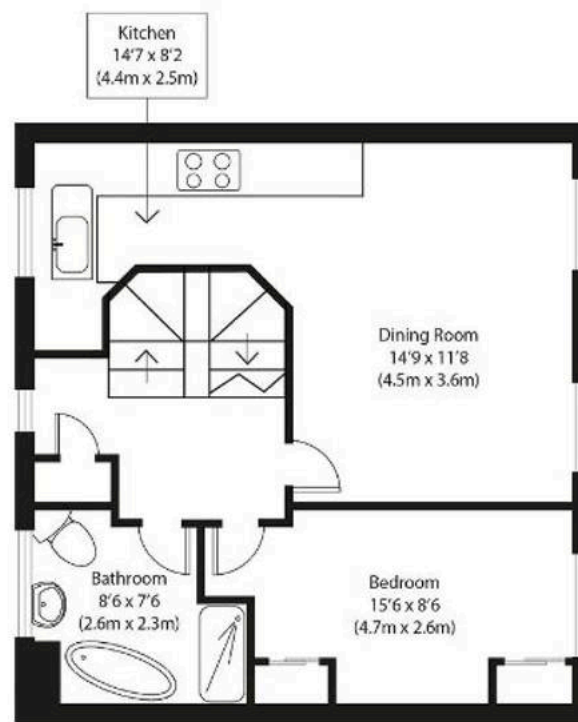
EPC Environmental Impact Rating: E



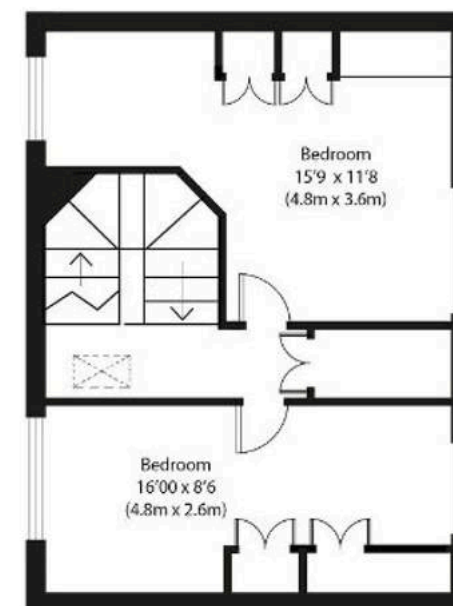




Ground Floor



First Floor



Second Floor



Approximate Gross Internal Area
1410 sq ft (131 sq m)

Disclaimer: Floorplan measurements are approximate and are for illustrative purposes only. While we do not doubt the floor plan accuracy and completeness, you or your advisors should conduct a careful, independent investigation of the property in respect of monetary valuation. copyright www.photohausgroup.co.uk





Potters Estate Agents

Potters Estate Agents, 6 Market Hill – IP12 4LU

01394 447487 • enquiries@pottersestateagents.com • www.pottersestateagents.com/