



**19 Murray Close, Melton**

Guide Price **£346,500**







## 19 Murray Close

Melton, Woodbridge

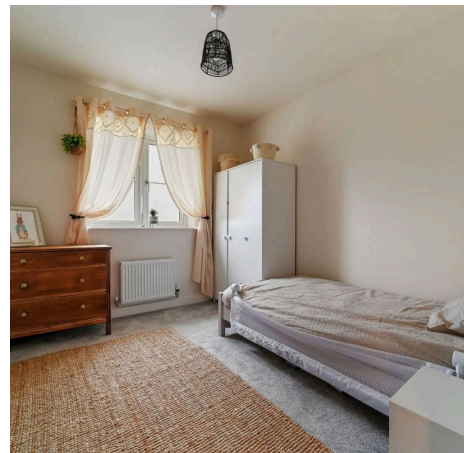
A three bedroom semi-detached home, at the end of a cul-de-sac with lovely views to the front aspect.

Council Tax band: C

Tenure: Freehold

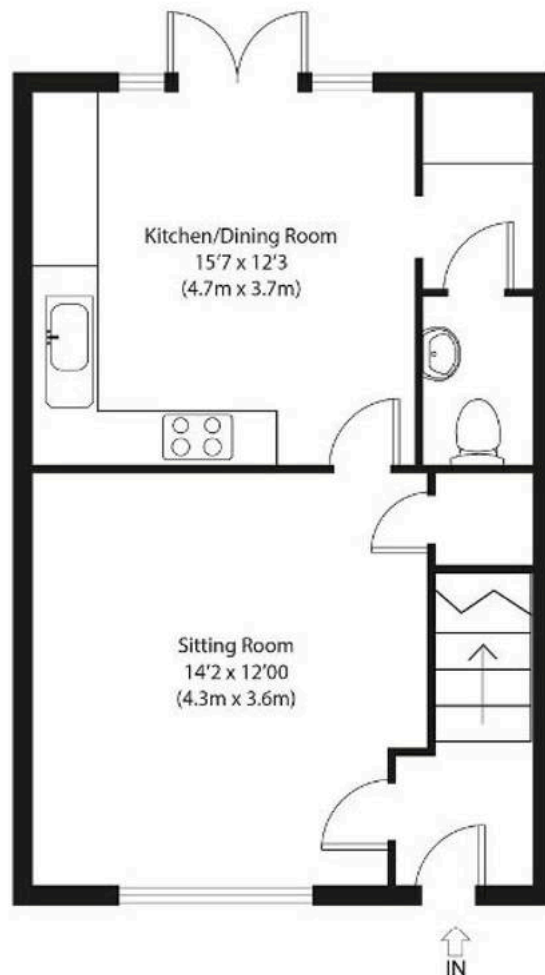
EPC Energy Efficiency Rating: B

EPC Environmental Impact Rating: B

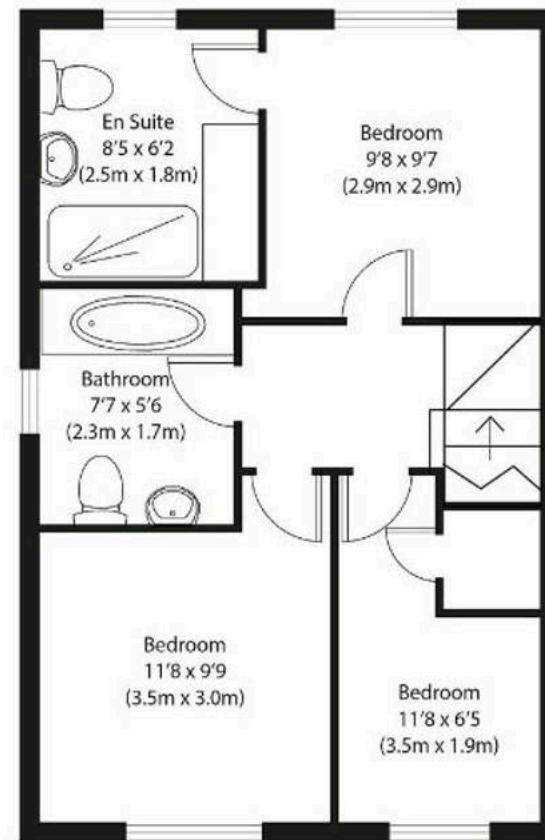








Ground Floor



First Floor



Approximate Gross Internal Area  
830 sq ft (77 sq m)

Disclaimer: Floorplan measurements are approximate and are for illustrative purposes only. While we do not doubt the floor plan accuracy and completeness, you or your advisors should conduct a careful, independent investigation of the property in respect of monetary valuation.  
copyright www.pottersgroup.co.uk

Potters





## Potters Estate Agents

Potters Estate Agents, 6 Market Hill - IP12 4LU

01394 447487 • [enquiries@pottersestateagents.com](mailto:enquiries@pottersestateagents.com) • [www.pottersestateagents.com/](http://www.pottersestateagents.com/)