



Flat 10, Vista Court, 1 Pooleys Yard

Offers in Region of £150,000





Flat 10

Vista Court, Ipswich

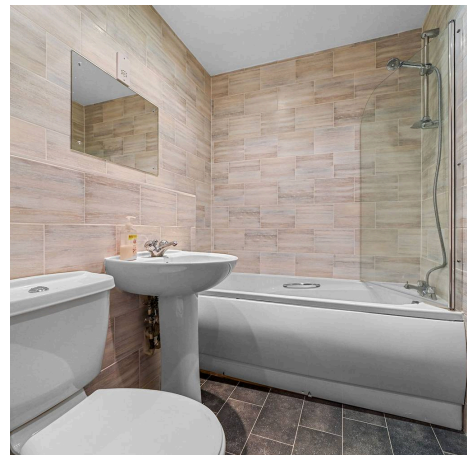
A stunning two-bedroom flat situated in the sought-after Vista Court development within Pooleys Yard, Ipswich.

Council Tax band: C

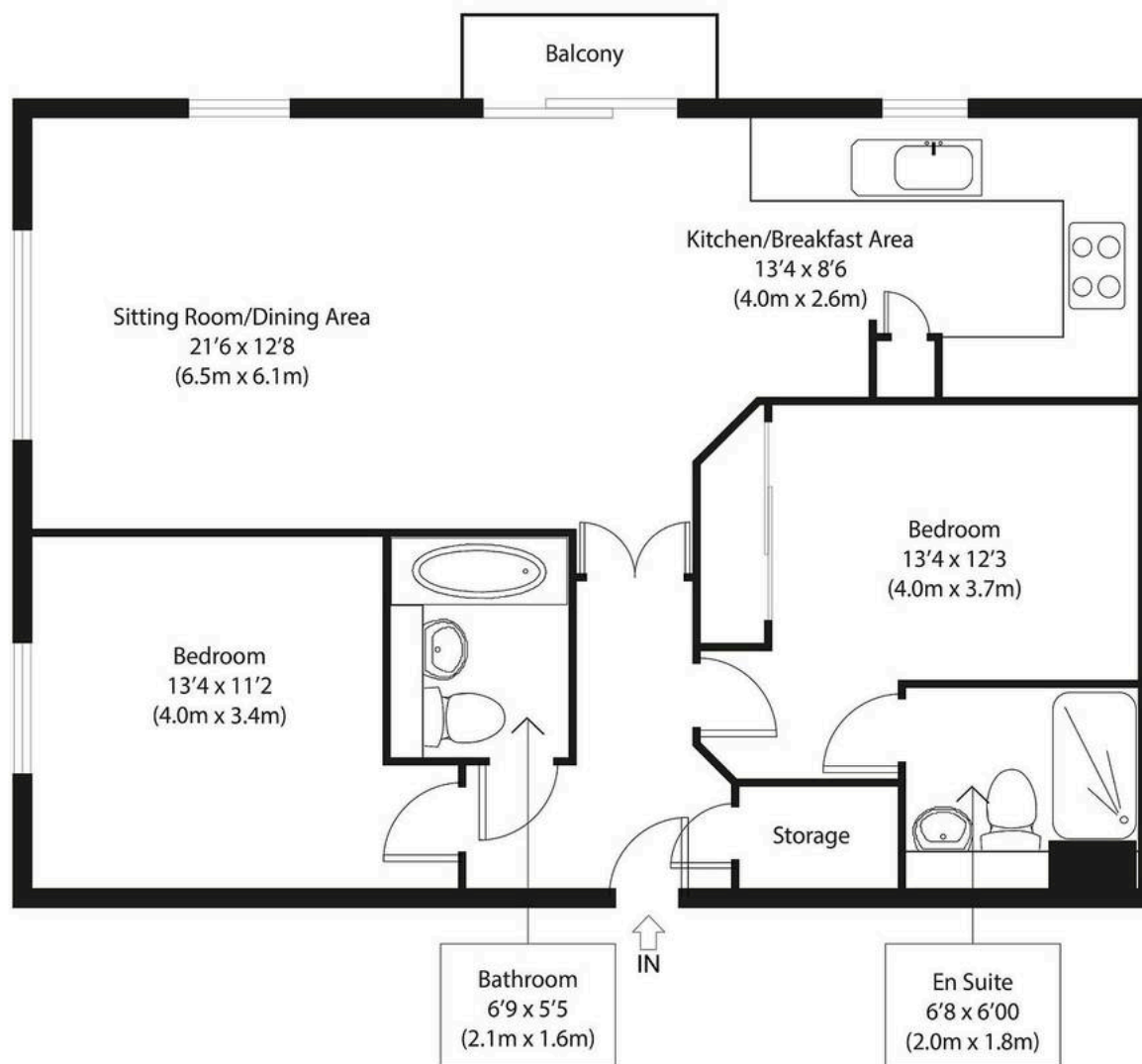
Tenure: Leasehold

EPC Energy Efficiency Rating: C

EPC Environmental Impact Rating: C





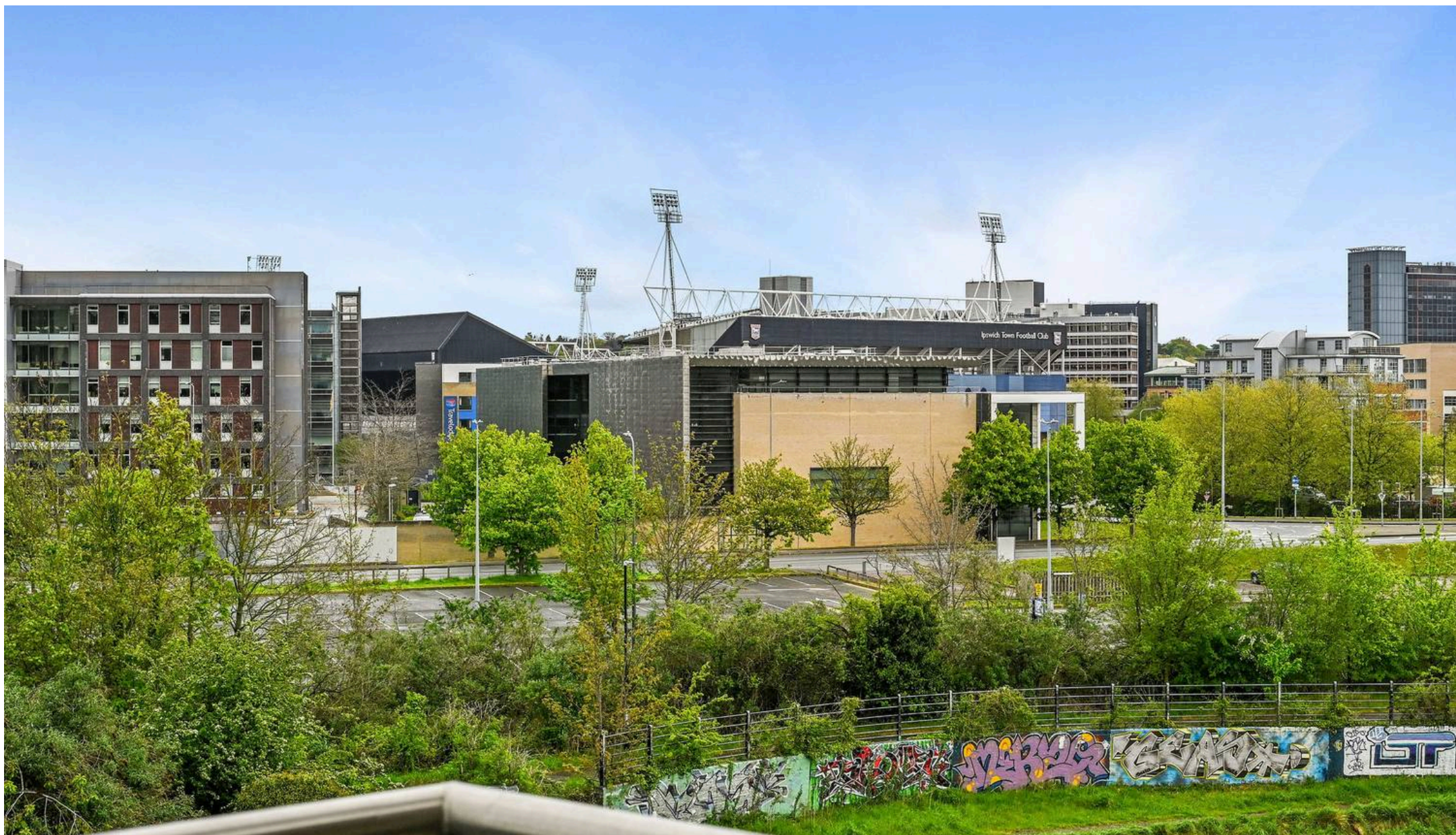


Third Floor

Approximate Gross Internal Area
855 sq ft (79 sq m)

Disclaimer: Floorplan measurements are approximate and are for illustrative purposes only. While we do not doubt the floor plan accuracy and completeness, you or your advisors should conduct a careful, independent investigation of the property in respect of monetary valuation. copyright www.ojphoto.co.uk

Potters



Potters Estate Agents

Potters Estate Agents, 6 Market Hill – IP12 4LU

01394 447487 • enquiries@pottersestateagents.com • www.pottersestateagents.com/