



## Moor Lane House Moor Lane

Elton, Matlock, DE4 2DA

£325,000





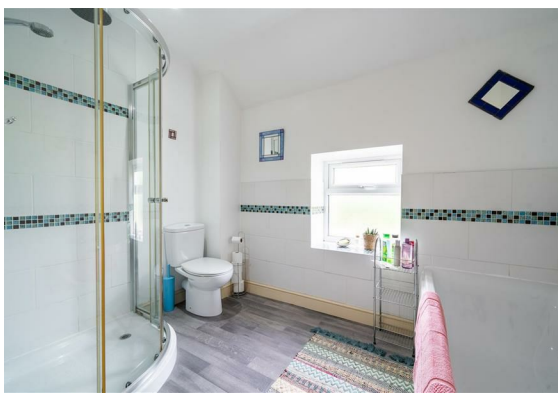
## Moor Lane House Moor

Elton, Matlock, DE4 2DA

Situated in the picturesque Peak District village of Elton, is this deceptively spacious 2 bedroom detached cottage that has been thoughtfully modernised, complimenting the property's original period features. Offering 893 sqft of accommodation over two storeys the property features a dual aspect living room with log burning stove, formal dining room, kitchen and separate utility room, two double bedrooms and bathroom with bath and separate shower.

The exterior of the property boasts beautifully presented gardens and summer house, backing onto neighbouring fields and benefits from one off street parking space.

**Dales and Peaks ForwardMove**  
- Please read

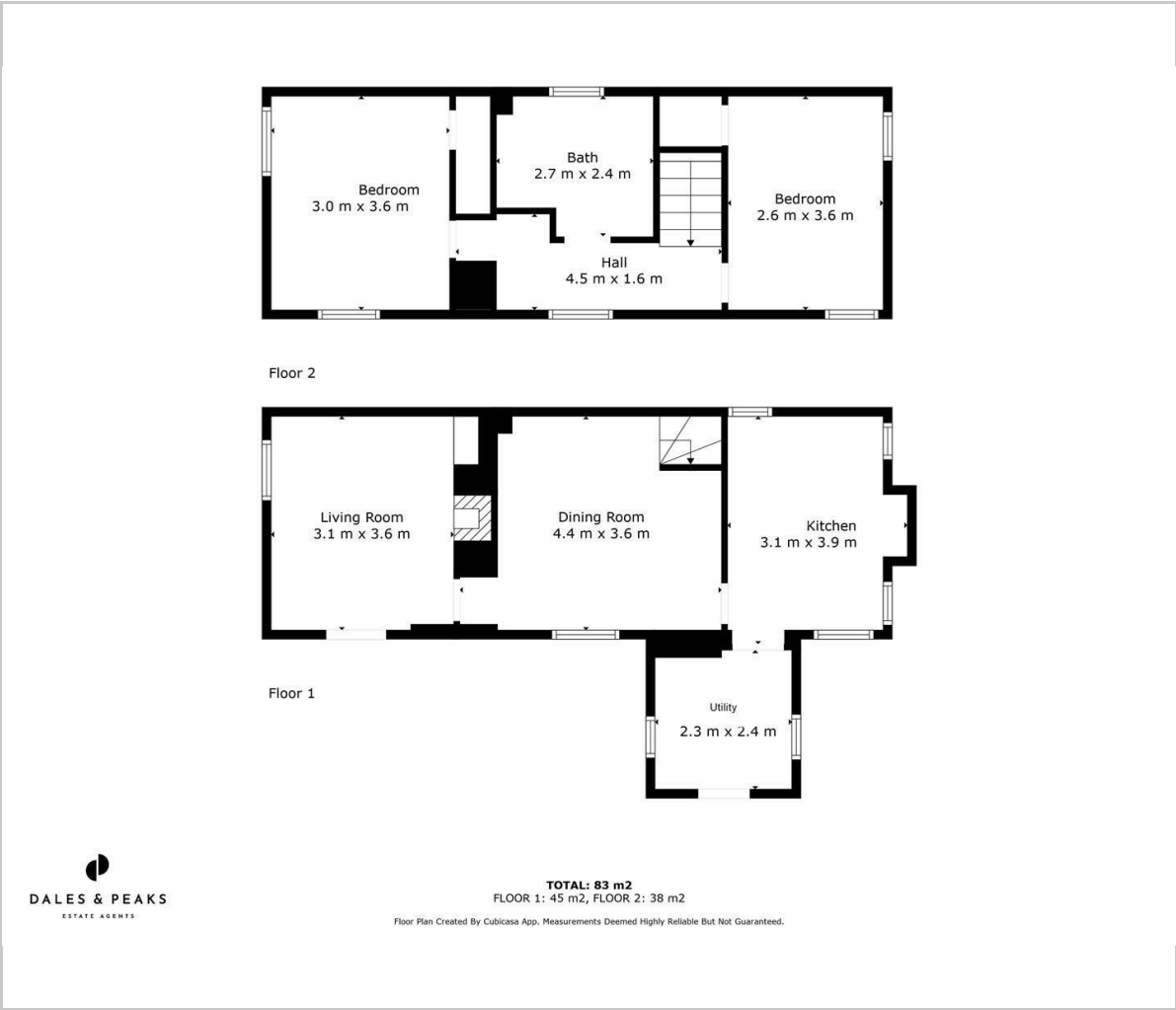








Floor Plan



Viewing

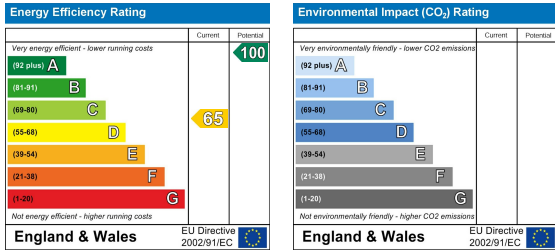
Please contact our Matlock Office on 01629 700246 if you wish to arrange a viewing appointment for this property or require further information.

These particulars, whilst believed to be accurate are set out as a general outline only for guidance and do not constitute any part of an offer or contract. Intending purchasers should not rely on them as statements of representation of fact, but must satisfy themselves by inspection or otherwise as to their accuracy. No person in this firms employment has the authority to make or give any representation or warranty in respect of the property.

Area Map



Energy Efficiency Graph



2 Dale Road, Matlock, Derbyshire, DE4 3LT  
T: 01629 700246



E: info@dalesandpeaks.co.uk  
www.dalesandpeaks.co.uk