



## Eastbank, Winster

Matlock, DE4 2DS

£950 PCM





## Eastbank, Winster

Matlock, DE4 2DS

A well presented stone-built cottage located in the heart of the Peak District.

The property briefly comprises; entrance porch, lounge with feature fireplace and log burner, spacious open plan kitchen diner with a feature fireplace housing a gas effect log burner. To the first floor there are two double bedrooms with original wood floors and family bathroom with separate shower cubicle.

The cottage also benefits from off road parking for two cars.

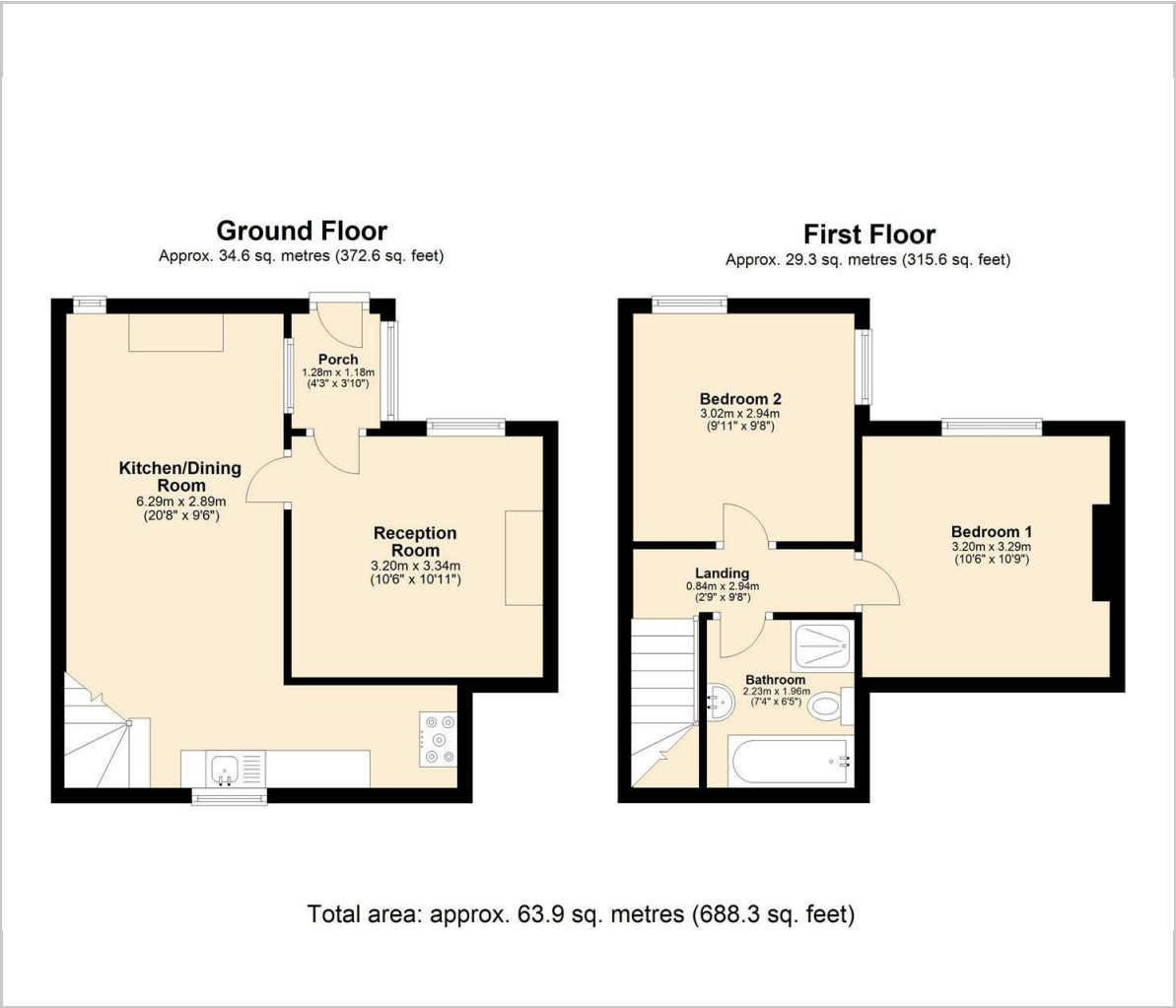
### Rental information







Floor Plan



Viewing

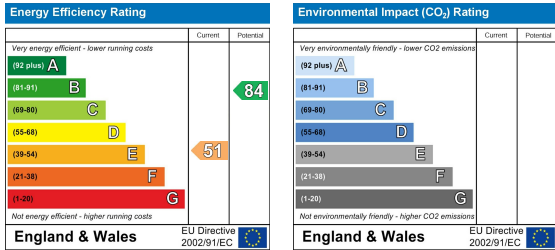
Please contact our Matlock Office on 01629 700246 if you wish to arrange a viewing appointment for this property or require further information.

These particulars, whilst believed to be accurate are set out as a general outline only for guidance and do not constitute any part of an offer or contract. Intending purchasers should not rely on them as statements of representation of fact, but must satisfy themselves by inspection or otherwise as to their accuracy. No person in this firms employment has the authority to make or give any representation or warranty in respect of the property.

Area Map



Energy Efficiency Graph



2 Dale Road, Matlock, Derbyshire, DE4 3LT  
T: 01629 700246



E: info@dalesandpeaks.co.uk  
www.dalesandpeaks.co.uk