



Spring Cottage Main Road

Lea, Matlock, DE4 5GJ

Guide Price £375,000



Spring Cottage Main Road

Lea, Matlock, DE4 5GJ

£375,000 - £395,000 (Guide price) A characterful 2 bedroom, 2 loft room, 3 storey, cottage situated in the idyllic Peak District village of Lea, dated to 1781 as part of the Florence Nightingale estate. Offering 990 sq ft of versatile living accommodation and benefitting from a rear cottage garden, off street parking and summer house with decking and glass balcony overlooking Lea Brook.

The ground floor comprises; Front aspect living room with multi fuel burning stove, open plan dining kitchen with integrated appliances and access onto the rear garden.

The first floor comprises; Master bedroom, modern shower room and room with option for use as a snug, dressing room or home office.

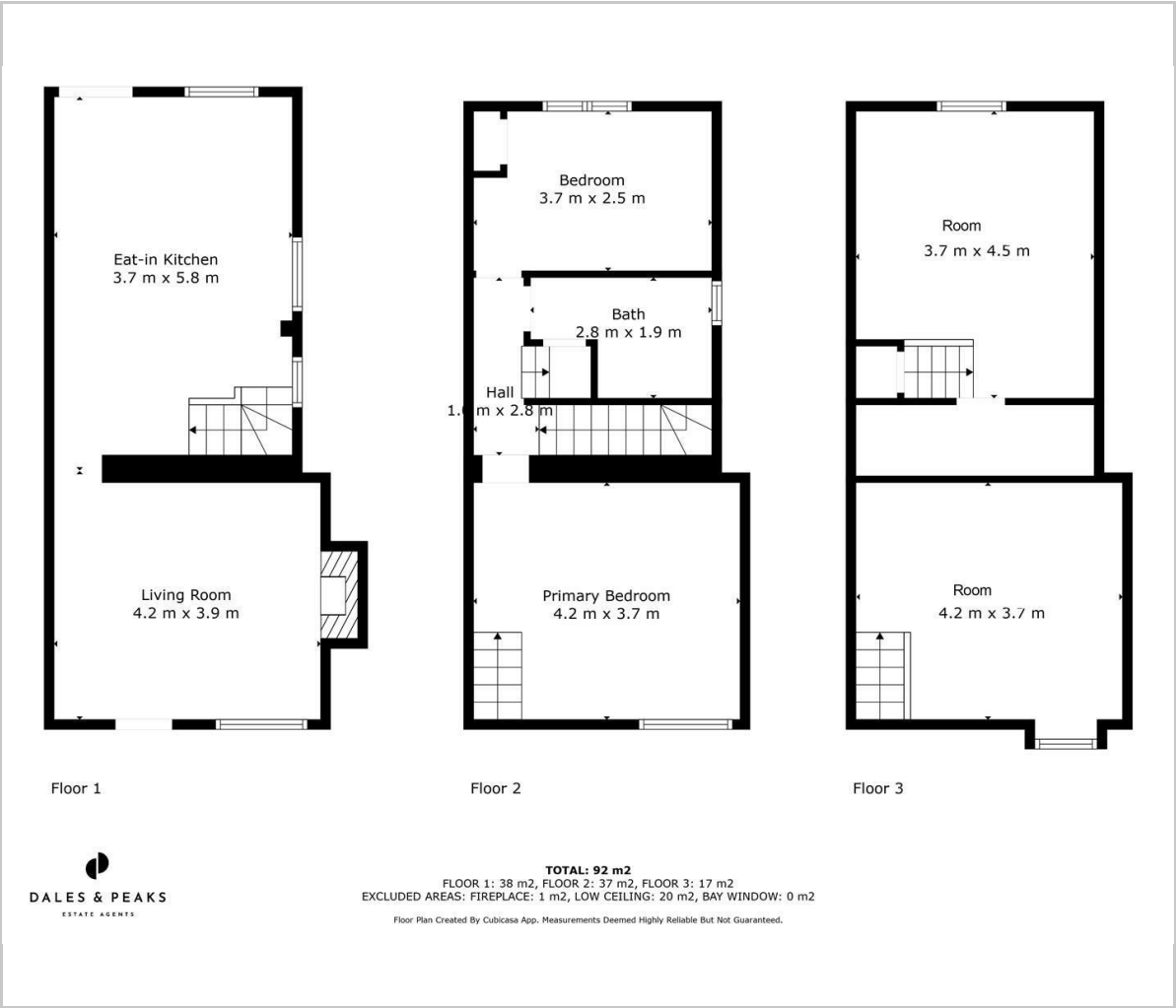
The second floor comprises; Second double bedroom and another versatile room with pitched ceiling.

Dales and Peaks ForwardMove
- Please read





Floor Plan

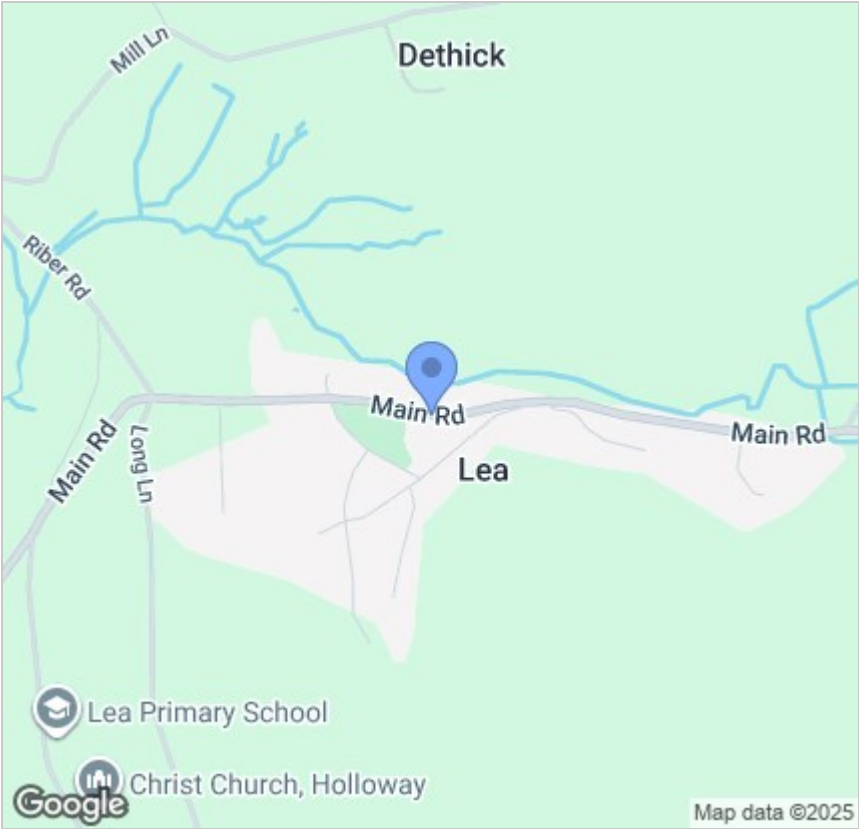


Viewing

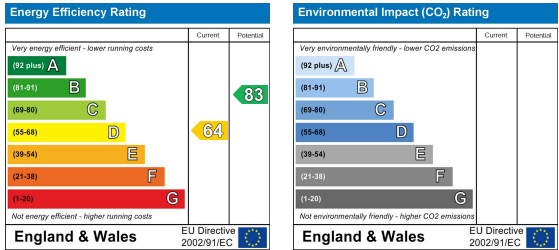
Please contact our Matlock Office on 01629 700246 if you wish to arrange a viewing appointment for this property or require further information.

These particulars, whilst believed to be accurate are set out as a general outline only for guidance and do not constitute any part of an offer or contract. Intending purchasers should not rely on them as statements of representation of fact, but must satisfy themselves by inspection or otherwise as to their accuracy. No person in this firms employment has the authority to make or give any representation or warranty in respect of the property.

Area Map



Energy Efficiency Graph



2 Dale Road, Matlock, Derbyshire, DE4 3LT
T: 01629 700246



E: info@dalesandpeaks.co.uk
www.dalesandpeaks.co.uk