



14 King Street

Middleton, Matlock, DE4 4ND

£850 PCM



14 King Street

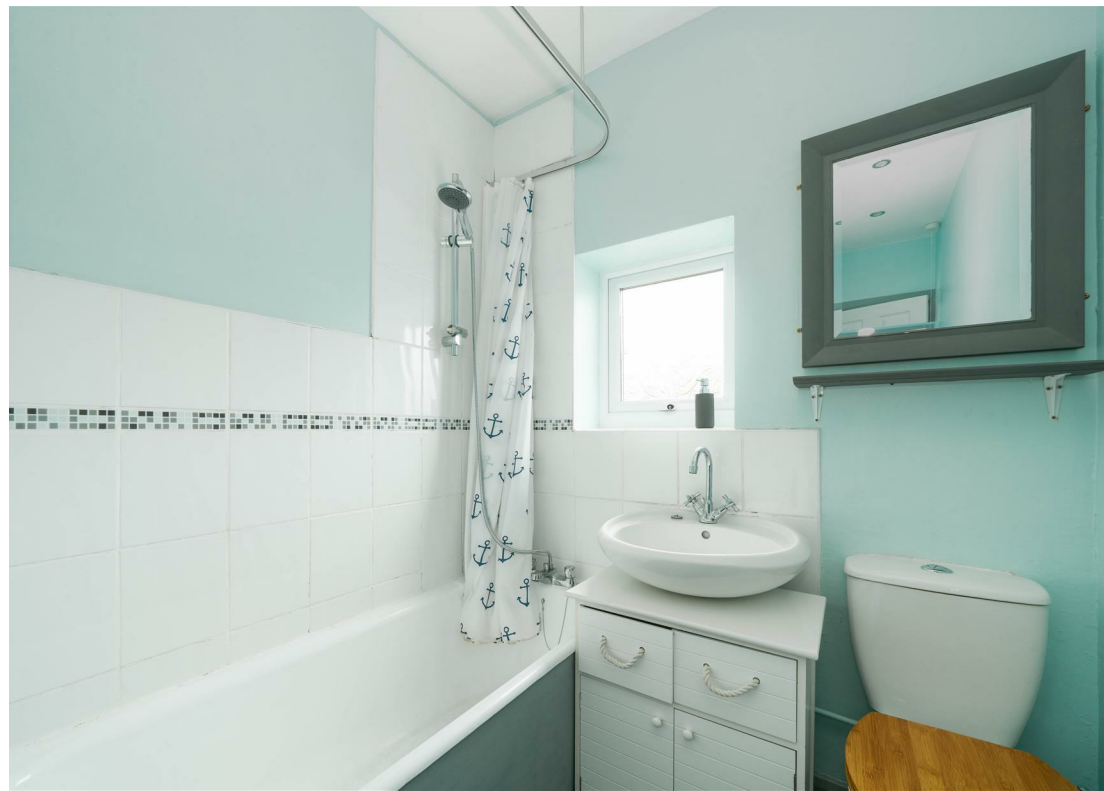
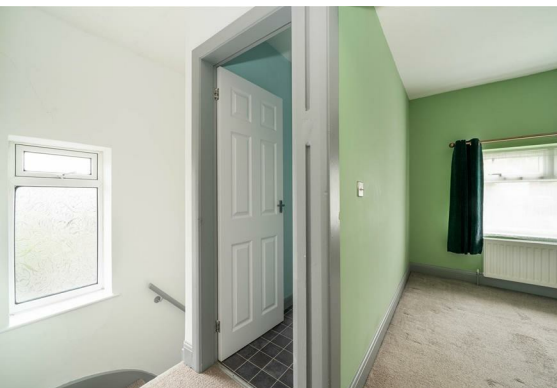
Middleton, Matlock, DE4 4ND

This comfortable, well presented three bedroom semi detached property is situated in the scenic village of Middleton. The property offers 710 sqft of accommodation over two floors. To the ground floor there is a generously proportioned dining kitchen, comfortable lounge and downstairs WC. To the first floor there are three double bedrooms and family bathroom.

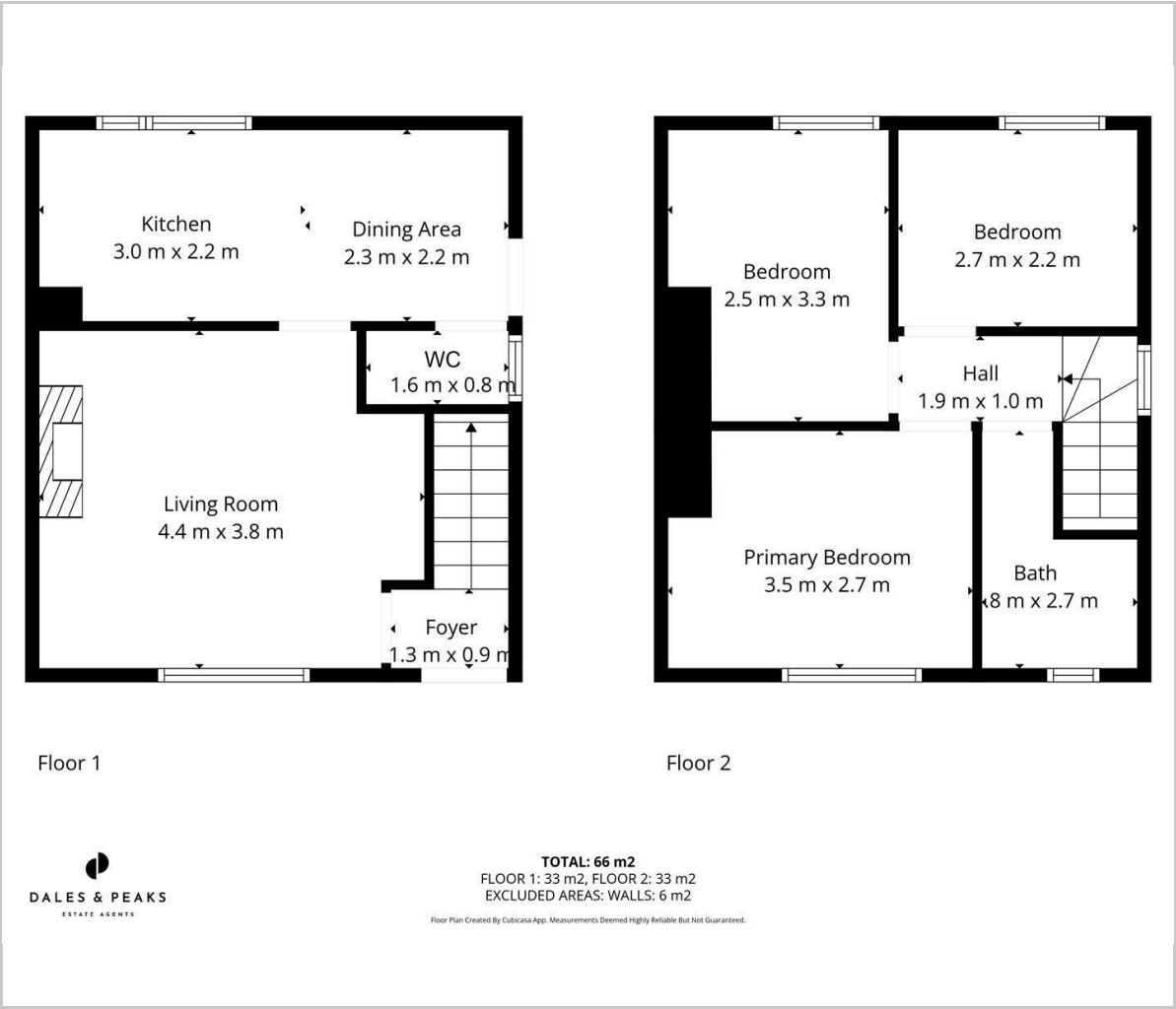
To the rear of the property there is a private garden with pleasant views. On road parking.

Rental information





Floor Plan



Viewing

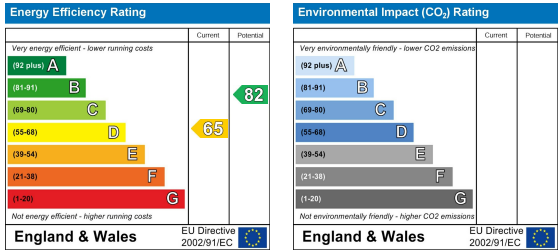
Please contact our Matlock Office on 01629 700246 if you wish to arrange a viewing appointment for this property or require further information.

These particulars, whilst believed to be accurate are set out as a general outline only for guidance and do not constitute any part of an offer or contract. Intending purchasers should not rely on them as statements of representation of fact, but must satisfy themselves by inspection or otherwise as to their accuracy. No person in this firms employment has the authority to make or give any representation or warranty in respect of the property.

Area Map



Energy Efficiency Graph



2 Dale Road, Matlock, Derbyshire, DE4 3LT
T: 01629 700246



E: info@dalesandpeaks.co.uk
www.dalesandpeaks.co.uk