



DALES & PEAKS



30 Church Street
, Matlock, DE4 3BY

£180,000



30 Church Street

, Matlock, DE4 3BY

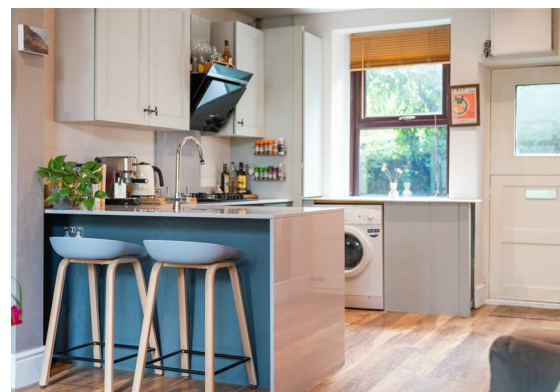
Nestled on Church Street in the picturesque town of Matlock, this charming mid terrace house offers a delightful blend of comfort and style. Offering 688 sqft of living accommodation, the property features an open plan living space with log burning stove, a low maintenance rear garden and a loft room.

The ground floor comprises; Open plan living space with log burning stove, modern kitchen with breakfast bar seating area and access onto the rear garden.

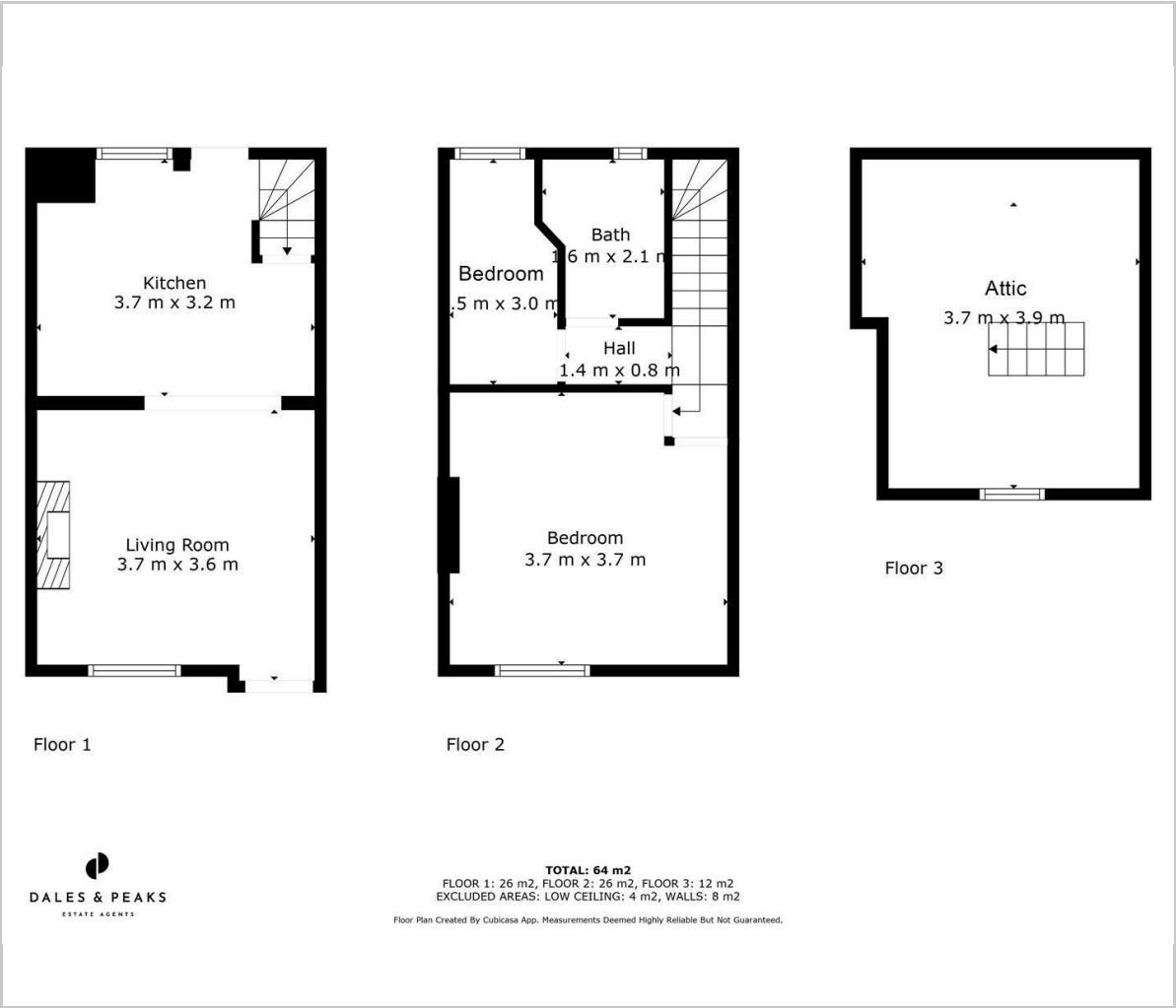
The first floor comprises; Front aspect double bedroom, a single bedroom and shower room.

Dales and Peaks ForwardMove
- Please read





Floor Plan

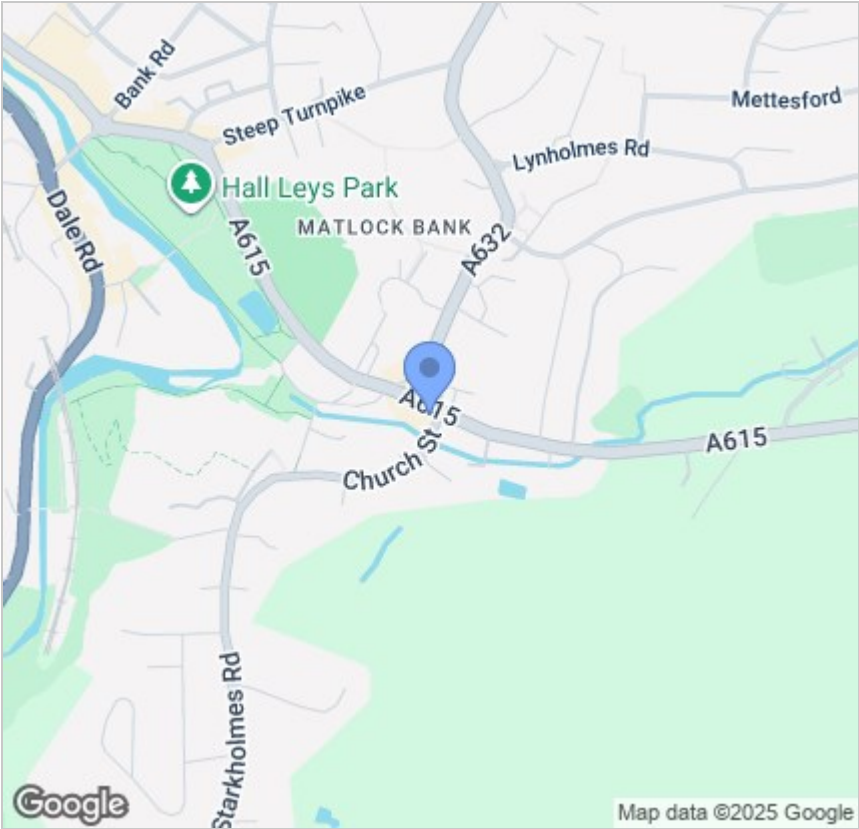


Viewing

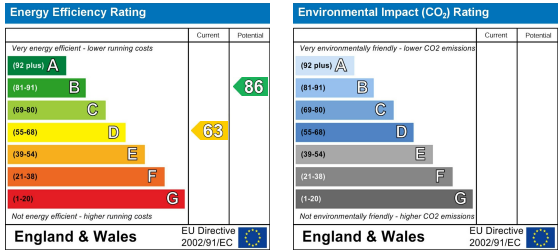
Please contact our Matlock Office on 01629 700246 if you wish to arrange a viewing appointment for this property or require further information.

These particulars, whilst believed to be accurate are set out as a general outline only for guidance and do not constitute any part of an offer or contract. Intending purchasers should not rely on them as statements of representation of fact, but must satisfy themselves by inspection or otherwise as to their accuracy. No person in this firms employment has the authority to make or give any representation or warranty in respect of the property.

Area Map



Energy Efficiency Graph



2 Dale Road, Matlock, Derbyshire, DE4 3LT
T: 01629 700246



E: info@dalesandpeaks.co.uk
www.dalesandpeaks.co.uk