



DALES & PEAKS



32 Wellington Street

, Matlock, DE4 3GS

£270,000



32 Wellington Street

, Matlock, DE4 3GS

A charming 3 bedroom end terrace property, enjoying views towards Riber and located within close proximity of local amenities. The property features 1367 sqft of living accommodation over 4 storeys and benefits from a patio seating area to the rear, off street parking for one vehicle and views towards Riber Castle.

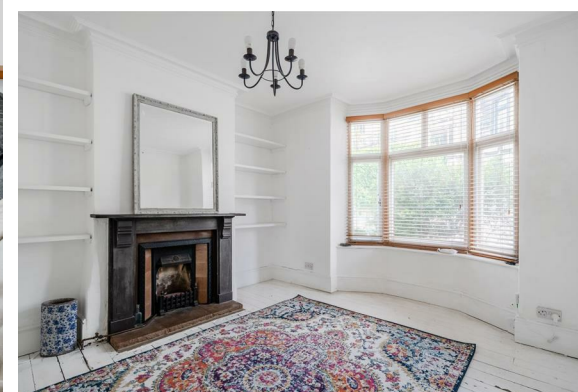
The lower ground floor comprises; Dining kitchen with original quarry tiled flooring and access onto the rear patio seating area. Separate utility room and pantry/storage.

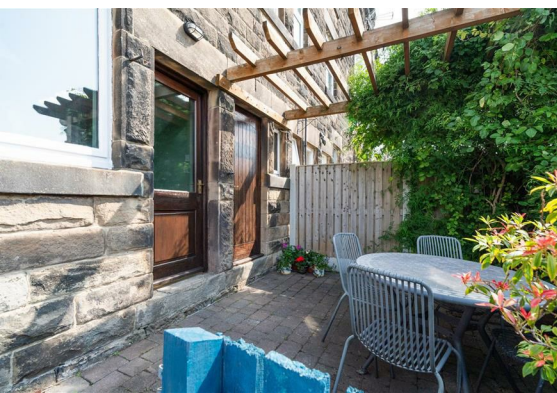
The ground floor comprises; Entrance hallway, front aspect living room with bay window and open fireplace, second reception room with log burning stove and views towards Riber Castle.

The first floor comprises; Two double bedrooms and main bathroom.

The second floor comprises; Double bedroom with eaves storage and Velux windows.

Dales and Peaks ForwardMove
- Please read





Floor Plan

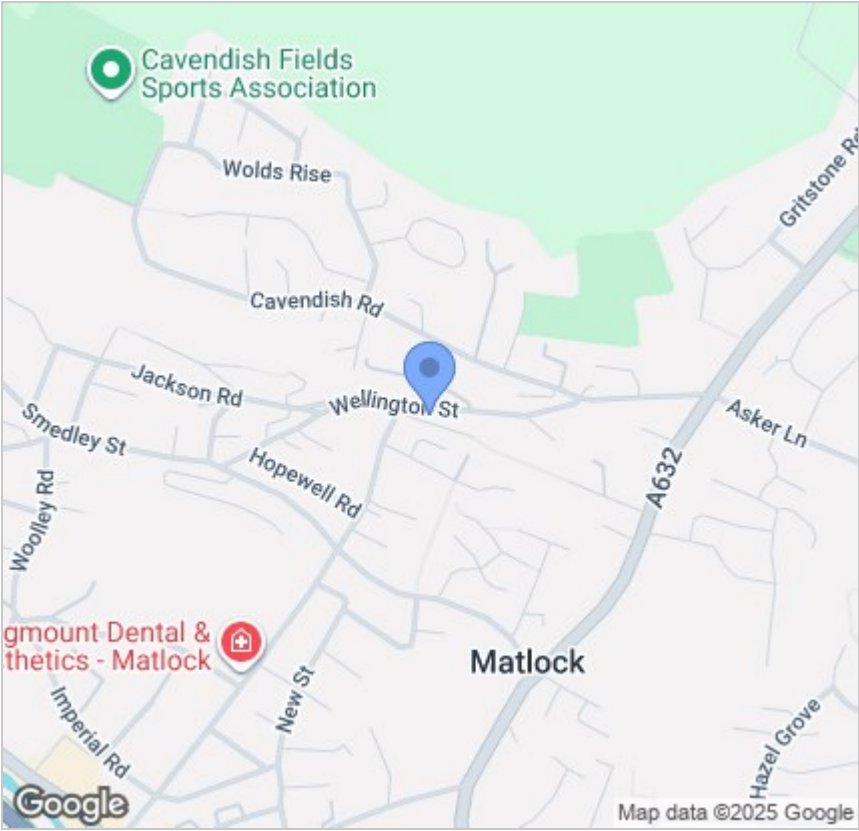


Viewing

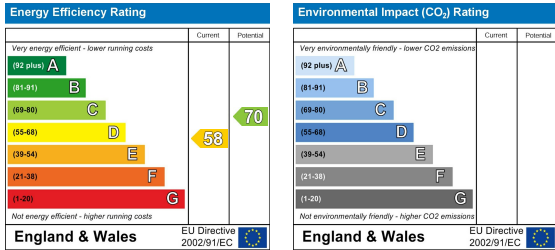
Please contact our Matlock Office on 01629 700246 if you wish to arrange a viewing appointment for this property or require further information.

These particulars, whilst believed to be accurate are set out as a general outline only for guidance and do not constitute any part of an offer or contract. Intending purchasers should not rely on them as statements of representation of fact, but must satisfy themselves by inspection or otherwise as to their accuracy. No person in this firms employment has the authority to make or give any representation or warranty in respect of the property.

Area Map



Energy Efficiency Graph



2 Dale Road, Matlock, Derbyshire, DE4 3LT
T: 01629 700246



E: info@dalesandpeaks.co.uk
www.dalesandpeaks.co.uk