



DALES & PEAKS



4 Hackney Grange

, Matlock, DE4 2QP

Guide Price £475,000



4 Hackney Grange

, Matlock, DE4 2QP

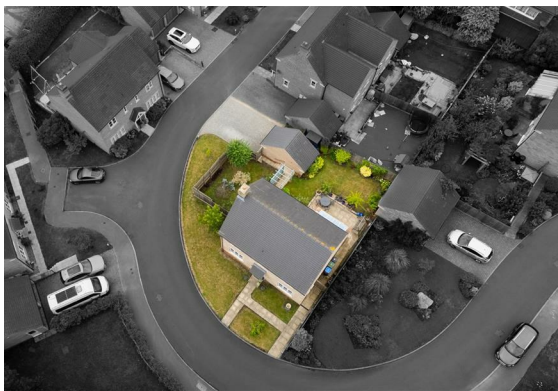
£475,000 - £500,000 (Guide price) A well presented and maintained 4 bedroom detached property, situated in a highly desirable location, within close proximity of Matlock town centre. Offering 1280 sqft of accommodation over two storeys, 4 Hackney Grange benefits from beautifully presented front and rear gardens, views of the surrounding countryside and off street parking with a single garage.

The ground floor comprises; Entrance hallway, dual aspect living room with patio doors, downstairs WC and open plan dining kitchen with integrated appliances, separate utility room and patio doors onto the rear garden.

The first floor comprises; Master bedroom with ensuite shower room, three further double bedrooms and family bathroom.

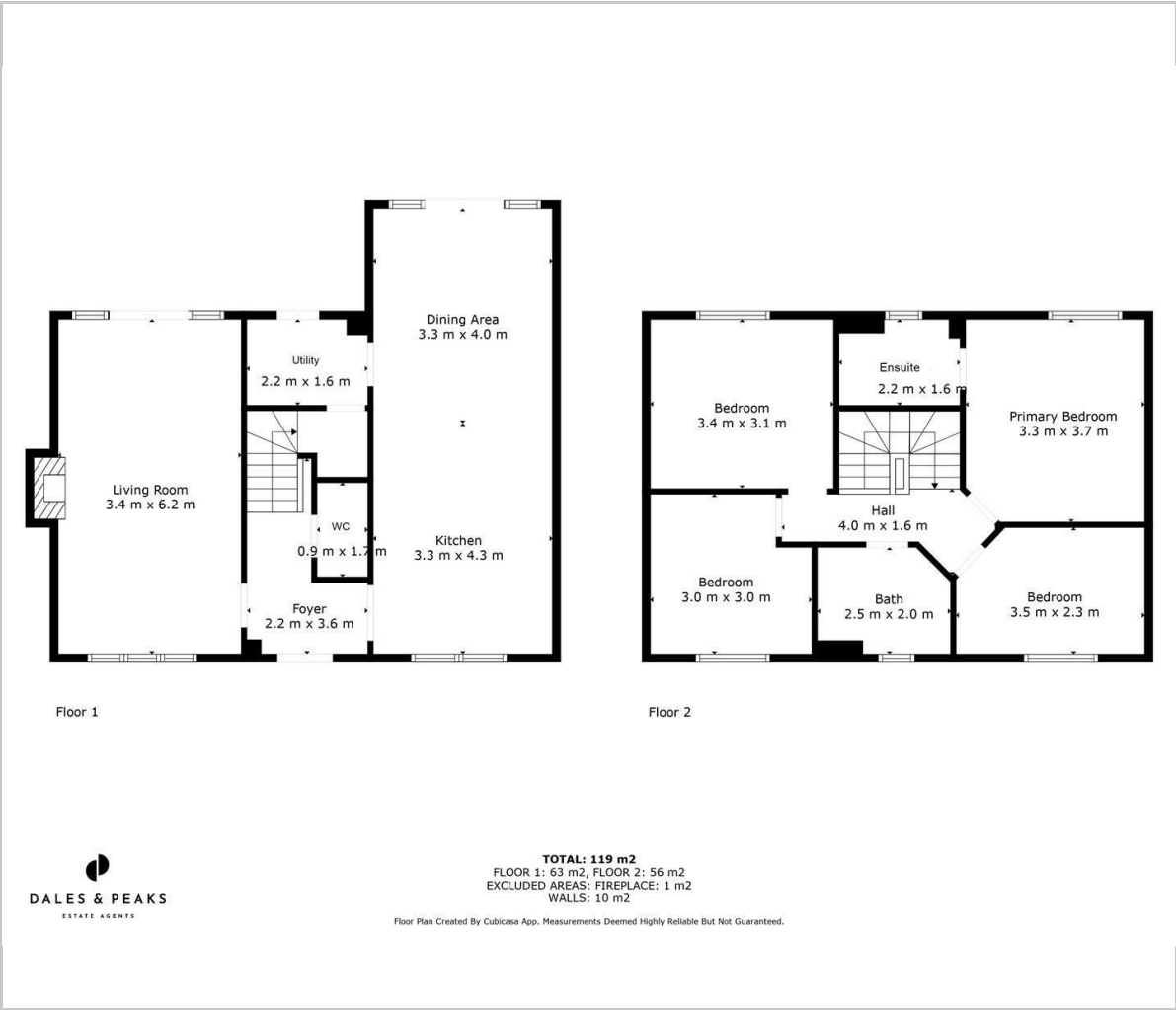
No upward chain.

Dales and Peaks ForwardMove
- Please read





Floor Plan

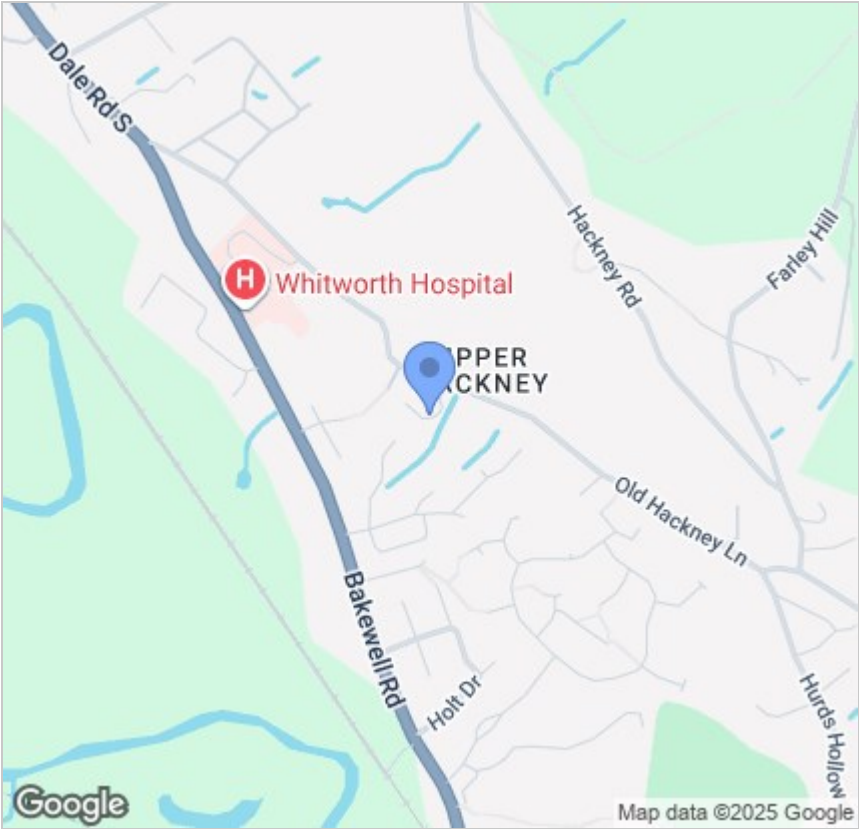


Viewing

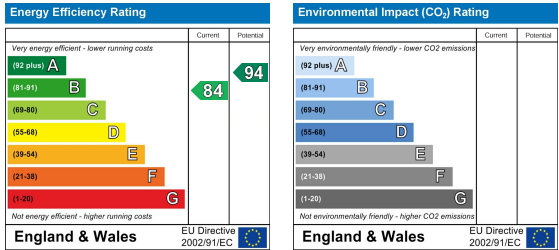
Please contact our Matlock Office on 01629 700246 if you wish to arrange a viewing appointment for this property or require further information.

These particulars, whilst believed to be accurate are set out as a general outline only for guidance and do not constitute any part of an offer or contract. Intending purchasers should not rely on them as statements of representation of fact, but must satisfy themselves by inspection or otherwise as to their accuracy. No person in this firms employment has the authority to make or give any representation or warranty in respect of the property.

Area Map



Energy Efficiency Graph



2 Dale Road, Matlock, Derbyshire, DE4 3LT
T: 01629 700246



E: info@dalesandpeaks.co.uk
www.dalesandpeaks.co.uk