

Rambler Cottage Derby Road

Matlock Bath, Matlock, DE4 3PY

Offers Over £400,000



Rambler Cottage Derby

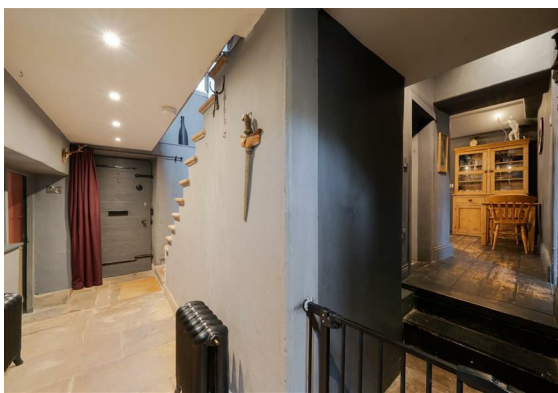
Matlock Bath, Matlock, DE4 3PY

A stunning grade II listed period property that has been meticulously and thoughtfully modernised, carefully considering the property's heritage and complimenting the wealth of period features with chic, classic-contemporary interior design throughout. Dating back to the late 18th century the property once formed part of Sir Richard Arkwright's Masson Mill mansion home. It was then separated in the 50's into three homes with Ramblers Cottage now offering 2344 sqft of accommodation over two storeys and featuring 4 spacious and uniquely designed bedrooms, 2 formal reception rooms and a private tiered garden with stunning countryside views.

The ground floor comprises; grand entrance hallway with stone flag flooring, family lounge with stunning original stove feature, formal dining room with open fire, stylish kitchen, utility room with separate access and a downstairs WC.

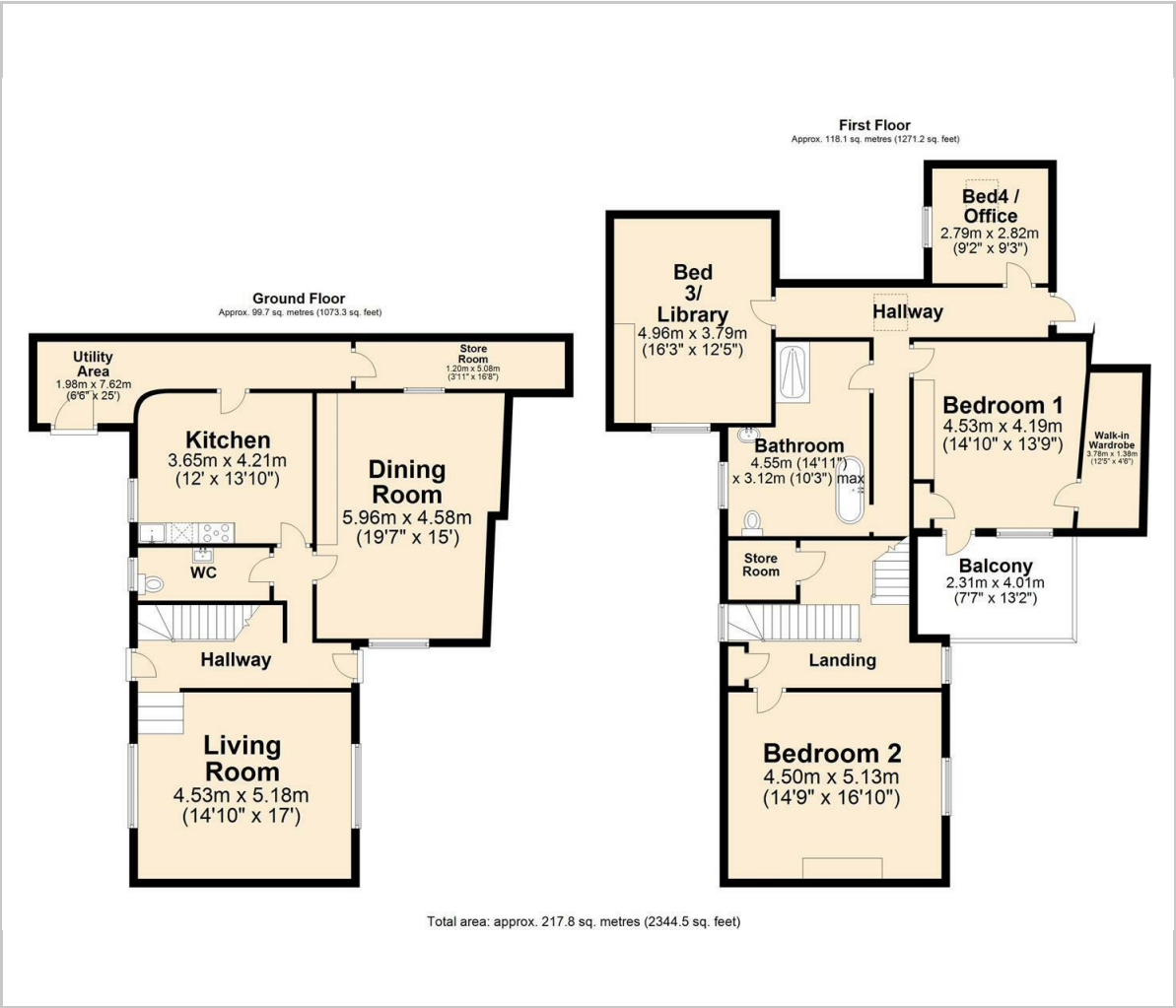
The first floor comprises; beautiful family bathroom with freestanding, roll top bath and separate shower, 4 uniquely styled bedrooms including the impressive master with walk-in wardrobe and balcony.

Dales and Peaks ForwardMove
- Please read





Floor Plan

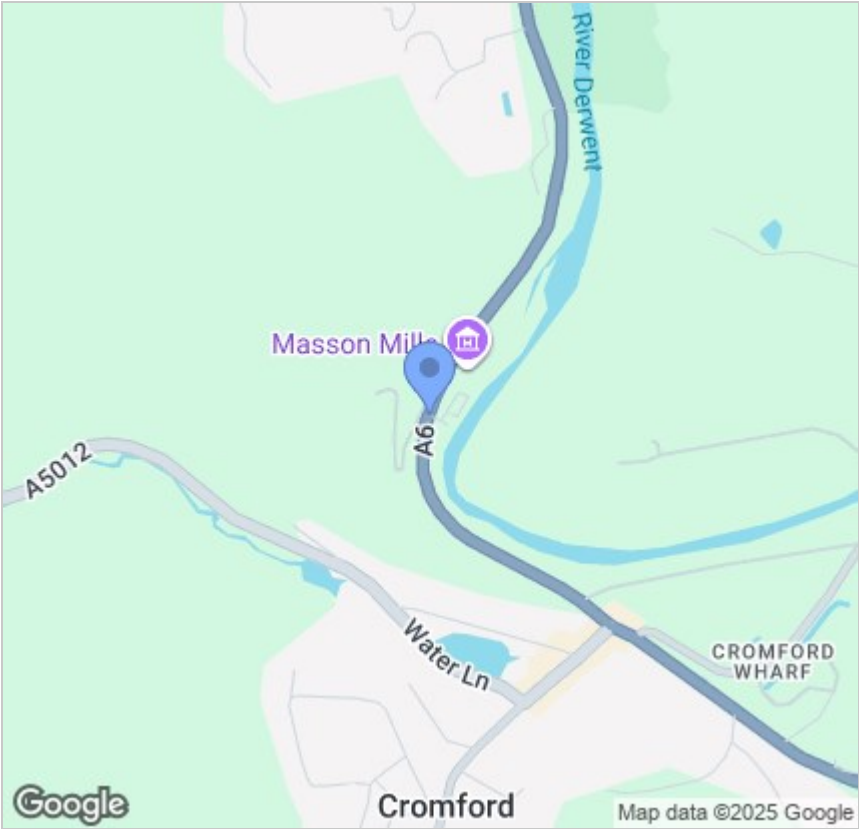


Viewing

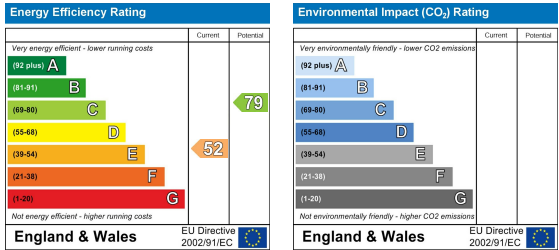
Please contact our Matlock Office on 01629 700246 if you wish to arrange a viewing appointment for this property or require further information.

These particulars, whilst believed to be accurate are set out as a general outline only for guidance and do not constitute any part of an offer or contract. Intending purchasers should not rely on them as statements of representation of fact, but must satisfy themselves by inspection or otherwise as to their accuracy. No person in this firms employment has the authority to make or give any representation or warranty in respect of the property.

Area Map



Energy Efficiency Graph



2 Dale Road, Matlock, Derbyshire, DE4 3LT
T: 01629 700246



E: info@dalesandpeaks.co.uk
www.dalesandpeaks.co.uk