



31 Burton Edge
, Bakewell, DE45 1FQ

£274,400



31 Burton Edge

, Bakewell, DE45 1FQ

Situated in the heart of the Peak District, is this well presented 2 bedroom semi detached property, offering 753 sqft of living accommodation. Benefitting from a generous plot, the property features gardens to the front and rear, views of the surrounding countryside and off street parking.

The ground floor comprises; Front aspect living room and open plan dining kitchen with access onto the rear garden.

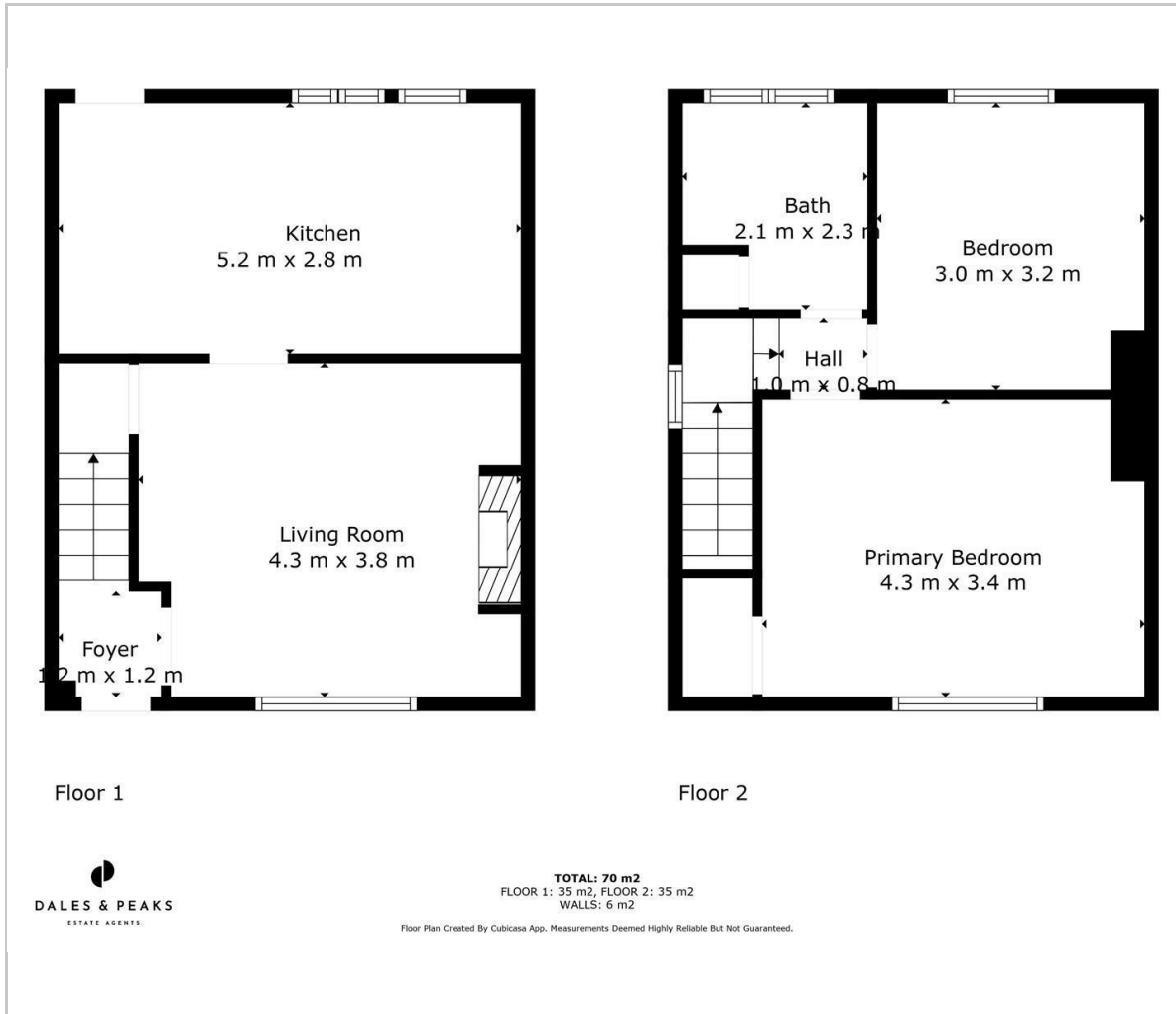
The first floor comprises; Master bedroom with incredible views of the surrounding countryside, bathroom and second double bedroom.

Dales and Peaks ForwardMove
- Please read





Floor Plan



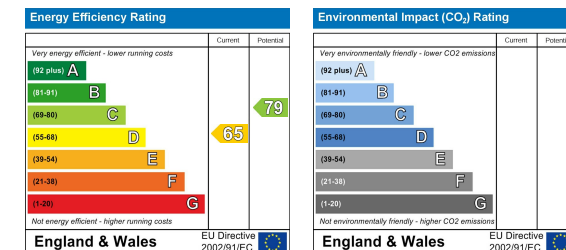
Area Map



Viewing

Please contact our Matlock Office on 01629 700246 if you wish to arrange a viewing appointment for this property or require further information.

Energy Efficiency Graph



These particulars, whilst believed to be accurate are set out as a general outline only for guidance and do not constitute any part of an offer or contract. Intending purchasers should not rely on them as statements of representation of fact, but must satisfy themselves by inspection or otherwise as to their accuracy. No person in this firm's employment has the authority to make or give any representation or warranty in respect of the property.



2 Dale Road, Matlock, Derbyshire, DE4 3LT
 T: 01629 700246

E: info@dalesandpeaks.co.uk
 www.dalesandpeaks.co.uk