



Darley House Estate

Darley Dale, Matlock, DE4 2QN

Offers Around £375,000



Darley House Estate

Darley Dale, Matlock, DE4 2QN

Tucked away on Darley House Estate in a private and secluded spot, is this well presented 3 bedroom detached bungalow. Featuring 818 sqft of living accommodation, the property offers well proportioned rooms throughout, whilst benefitting from a generous plot presenting beautiful gardens, and a car port with private driveway providing parking for a minimum of 3 vehicles. In addition, there is further ample off street parking on private land which includes a single garage and parking for up to 4 more vehicles.

The property comprises; Entrance hallway, front aspect kitchen with access onto the side of the property, dining room and living room with patio doors onto the rear garden. Two double bedrooms, one of which is currently used as a second reception room, single bedroom and main bathroom.

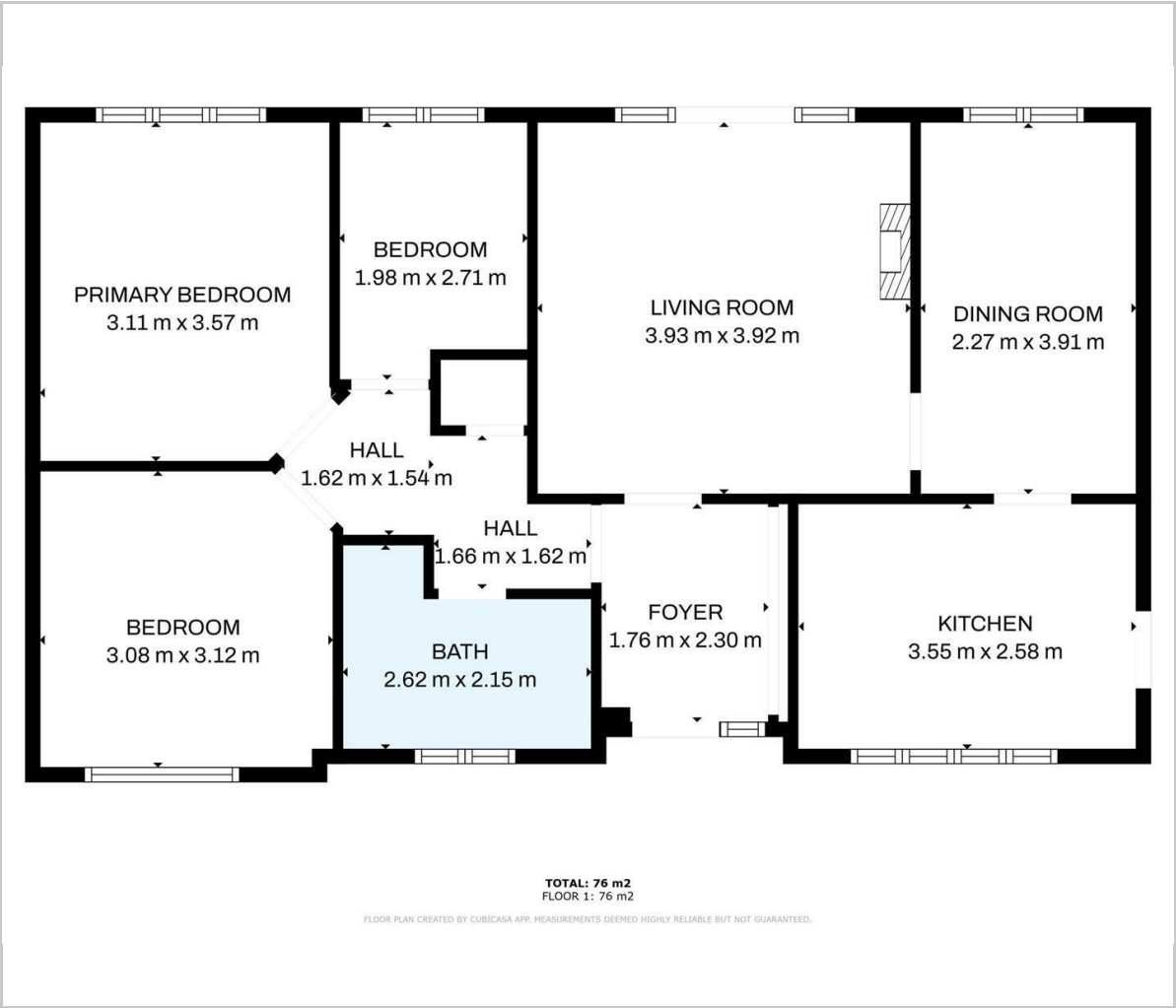
Darley House Estate is located within close proximity of local amenities, such as doctors surgeries, shops and benefits from good road communications linking to neighbouring villages and major cities.

Dales and Peaks ForwardMove
- Please read





Floor Plan

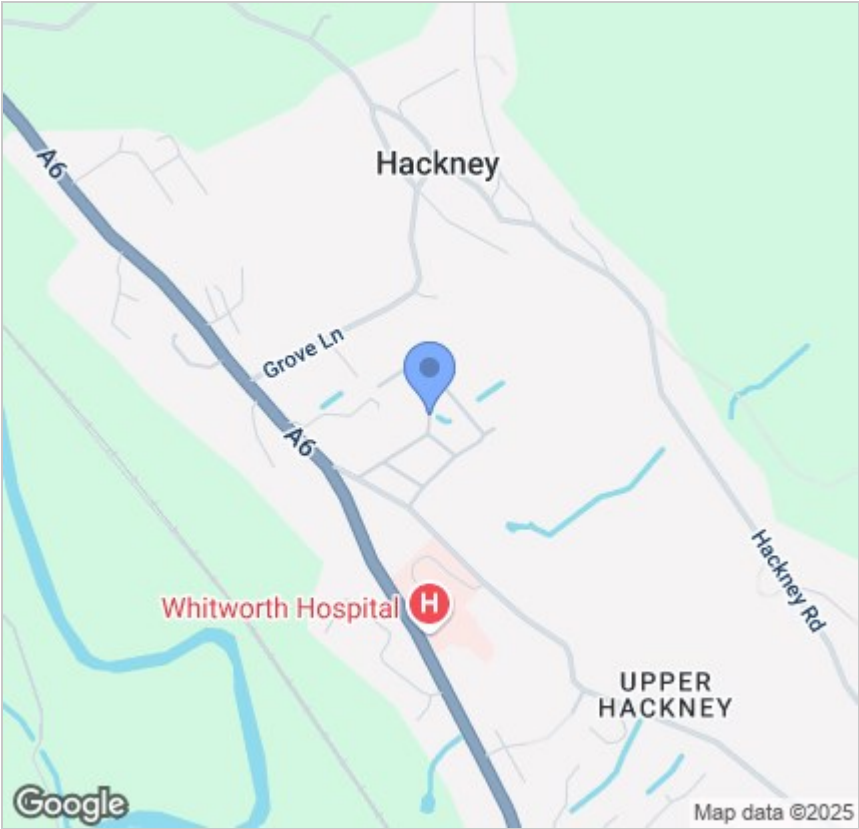


Viewing

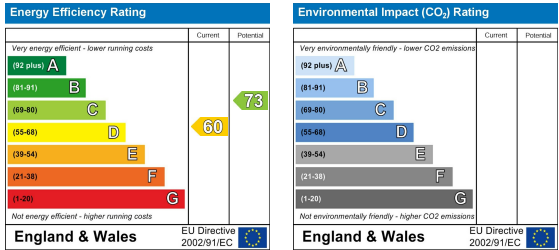
Please contact our Matlock Office on 01629 700246 if you wish to arrange a viewing appointment for this property or require further information.

These particulars, whilst believed to be accurate are set out as a general outline only for guidance and do not constitute any part of an offer or contract. Intending purchasers should not rely on them as statements of representation of fact, but must satisfy themselves by inspection or otherwise as to their accuracy. No person in this firms employment has the authority to make or give any representation or warranty in respect of the property.

Area Map



Energy Efficiency Graph



2 Dale Road, Matlock, Derbyshire, DE4 3LT
T: 01629 700246



E: info@dalesandpeaks.co.uk
www.dalesandpeaks.co.uk