



Hope Cottage Main Street

Great Longstone, Bakewell, DE45 1TG

Asking Price £300,000



Hope Cottage Main Street

Great Longstone, Bakewell, DE45
1TG

A charming two bedroom character cottage, offering 807 sqft of accommodation across two storeys. Situated in the sought after Peak District village of Great Longstone and within close proximity of the local amenities, Hope Cottage boasts period features, a courtyard garden and has been successfully let as holiday accommodation for many years.

The ground floor comprises; Front aspect living room with bay window and feature stone fireplace, kitchen with access onto the courtyard garden.

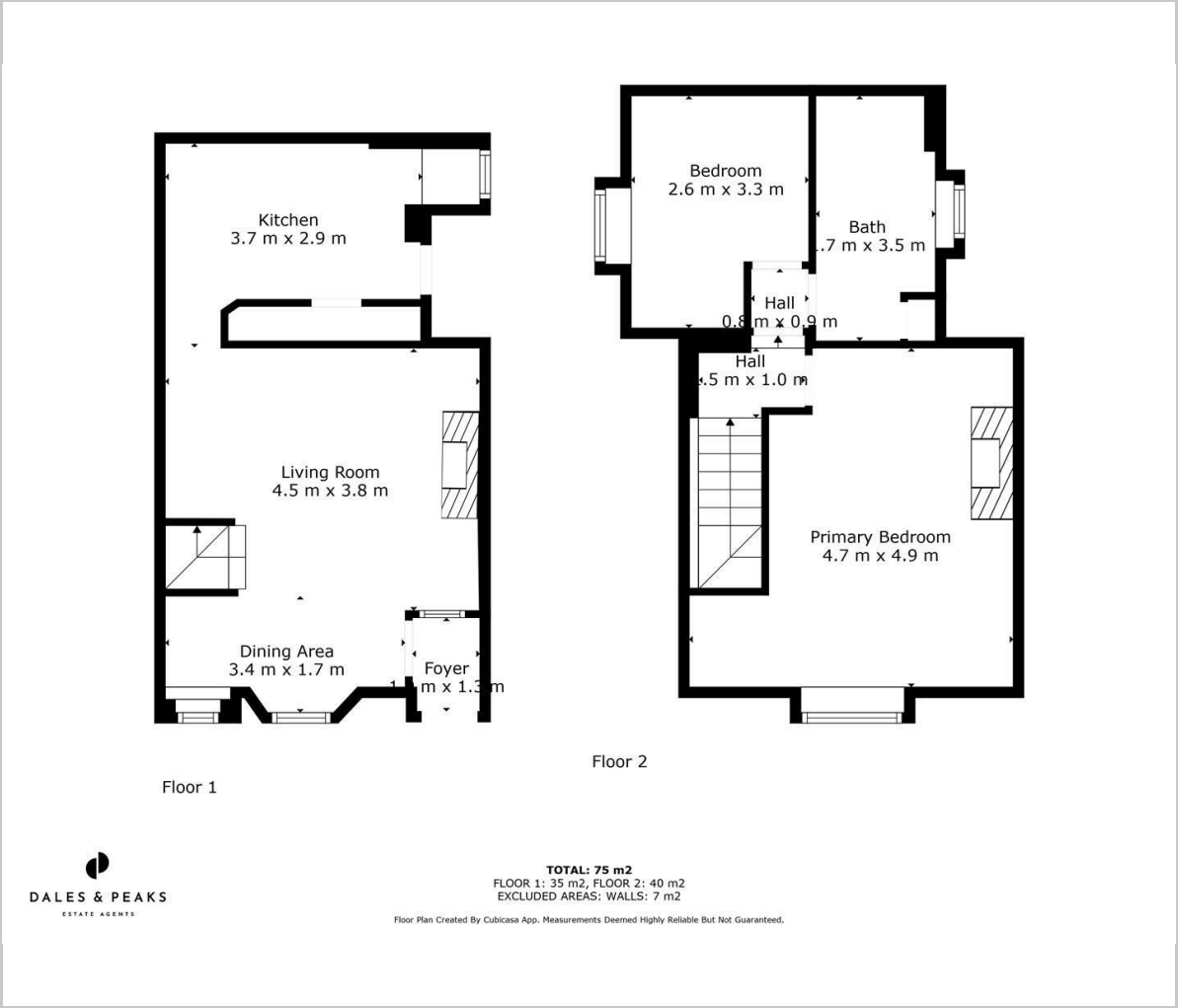
The first floor comprises; Two double bedrooms and bathroom.

Dales and Peaks ForwardMove
- Please read





Floor Plan



Viewing

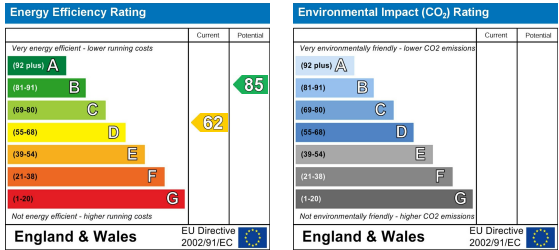
Please contact our Matlock Office on 01629 700246 if you wish to arrange a viewing appointment for this property or require further information.

These particulars, whilst believed to be accurate are set out as a general outline only for guidance and do not constitute any part of an offer or contract. Intending purchasers should not rely on them as statements of representation of fact, but must satisfy themselves by inspection or otherwise as to their accuracy. No person in this firms employment has the authority to make or give any representation or warranty in respect of the property.

Area Map



Energy Efficiency Graph



2 Dale Road, Matlock, Derbyshire, DE4 3LT
T: 01629 700246



E: info@dalesandpeaks.co.uk
www.dalesandpeaks.co.uk