



101 Chesterfield Road
, Matlock, DE4 3FS

£280,000



101 Chesterfield Road

, Matlock, DE4 3FS

A charming 2 bedroom cottage, situated in this highly desirable location, within close proximity to the centre of Matlock. Offering 871 sqft of accommodation over two storeys, the property benefits from low maintenance gardens, off street parking and scenic views of the surrounding countryside.

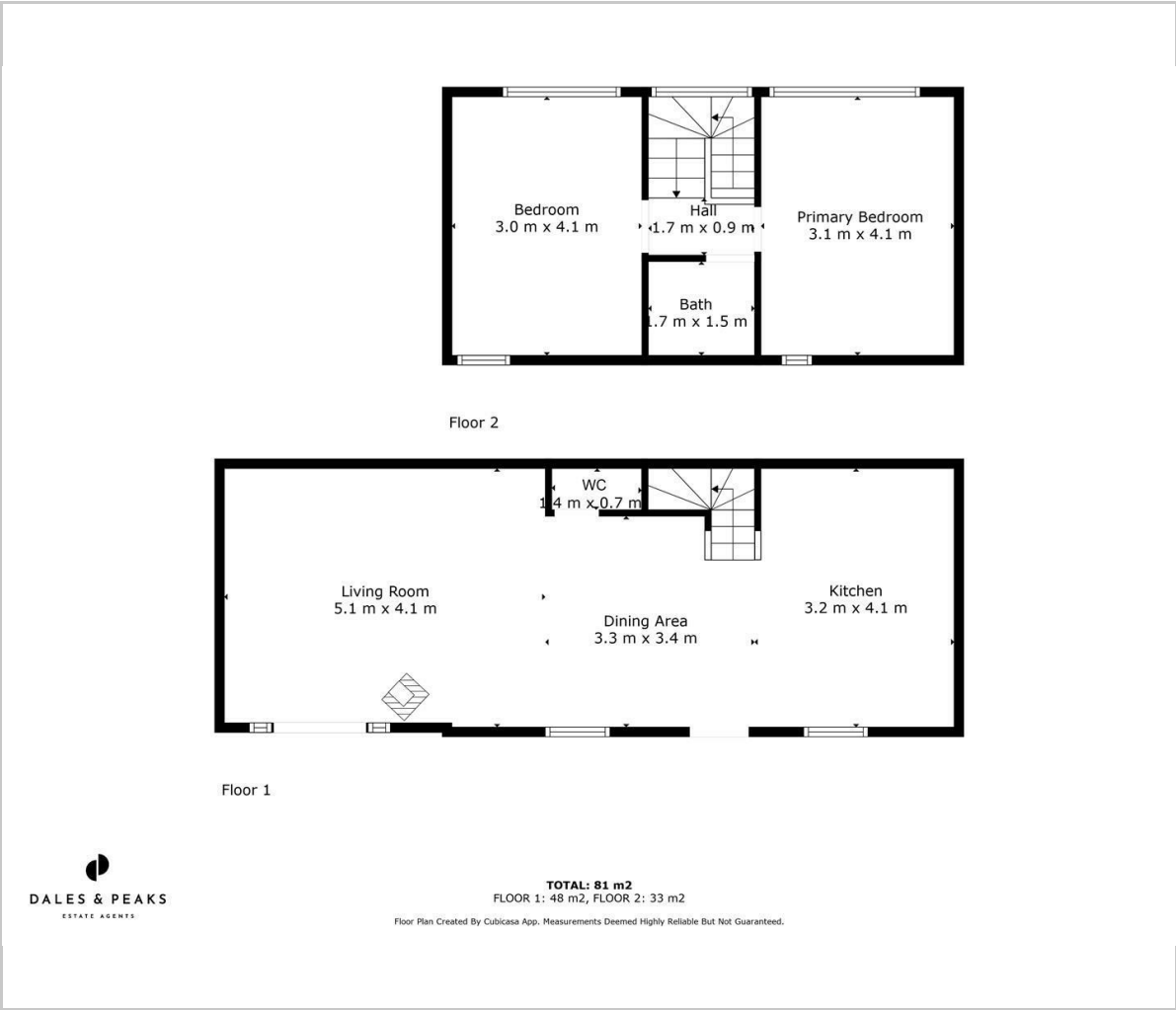
The property comprises; Open plan living space with patio doors onto the garden front garden, dining space and kitchen with integrated appliances. Two double bedrooms and bathroom.

Dales and Peaks ForwardMove
- Please read





Floor Plan



Viewing

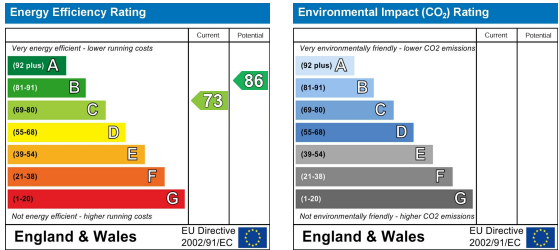
Please contact our Matlock Office on 01629 700246 if you wish to arrange a viewing appointment for this property or require further information.

These particulars, whilst believed to be accurate are set out as a general outline only for guidance and do not constitute any part of an offer or contract. Intending purchasers should not rely on them as statements of representation of fact, but must satisfy themselves by inspection or otherwise as to their accuracy. No person in this firms employment has the authority to make or give any representation or warranty in respect of the property.

Area Map



Energy Efficiency Graph



2 Dale Road, Matlock, Derbyshire, DE4 3LT
T: 01629 700246



E: info@dalesandpeaks.co.uk
www.dalesandpeaks.co.uk