



Catbells Ashover Road
Ashover, Chesterfield, S45 0BL
Guide Price £475,000

Catbells Ashover Road

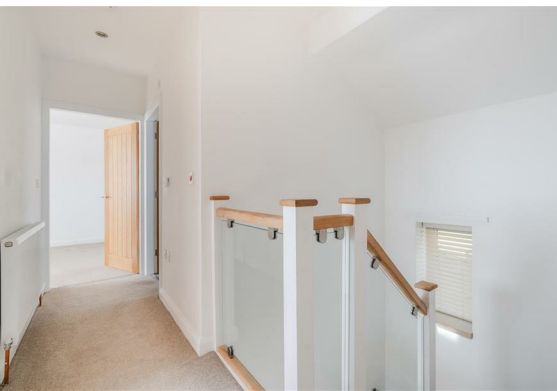
Ashover, Chesterfield, S45 0BL

£475,000 - £500,000 (guide price)
Catbells, situated in the charming village of Littlemoor, is a stunning three-bedroom, three-bathroom detached home offering a perfect blend of modern living and rural tranquillity set with in approx 0.3 acres. Finished to a high standard throughout, the property boasts a contemporary design that is both stylish and functional, making it an ideal family home.

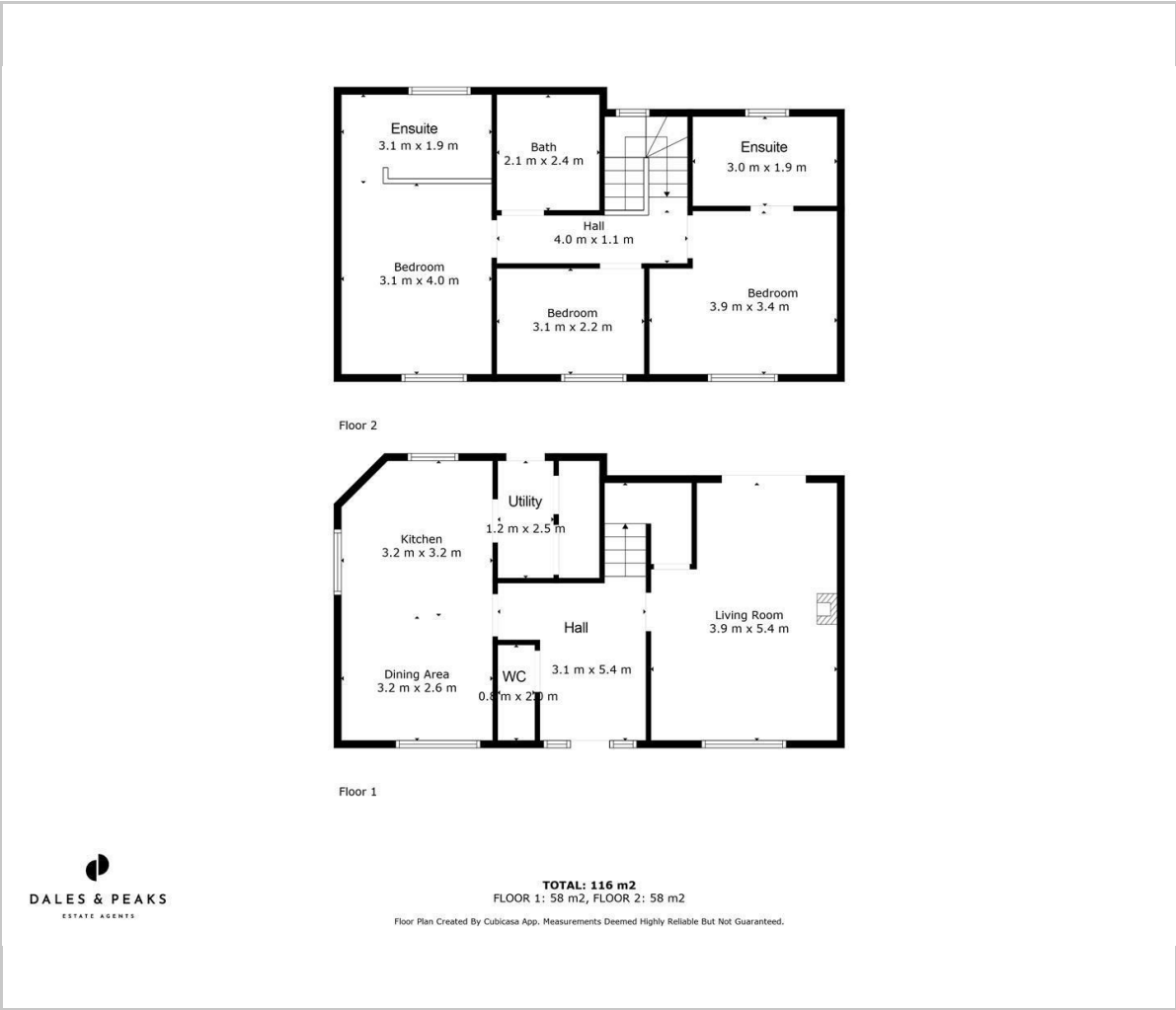
The location is particularly appealing, situated close to local schools, making it an excellent choice for families with children. The village atmosphere is cosy and inviting, providing a sense of community while still being within easy reach of Chesterfield or Matlock's amenities.

Comprising; Entrance hallway with downstairs cloakroom, open kitchen/dining space with separate utility and a cosy living room with log burner and french doors leading to the rear! The first floor boasts two bright double bedrooms, both with en-suites as well as a third bedroom and separate bathroom. Outside there is a lower level of garden with steps leading to a further area of garden.





Floor Plan



Viewing

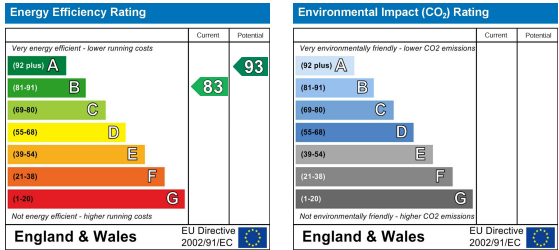
Please contact our Matlock Office on 01629 700246 if you wish to arrange a viewing appointment for this property or require further information.

These particulars, whilst believed to be accurate are set out as a general outline only for guidance and do not constitute any part of an offer or contract. Intending purchasers should not rely on them as statements of representation of fact, but must satisfy themselves by inspection or otherwise as to their accuracy. No person in this firms employment has the authority to make or give any representation or warranty in respect of the property.

Area Map



Energy Efficiency Graph



2 Dale Road, Matlock, Derbyshire, DE4 3LT
T: 01629 700246



E: info@dalesandpeaks.co.uk
www.dalesandpeaks.co.uk