



36 Hackney Road

Hackney, Matlock, DE4 2PX

Offers In The Region Of £230,000

36 Hackney Road

Hackney, Matlock, DE4 2PX

A deceptively spacious 2 bedroom semi detached property, enjoying an elevated position with breathtaking views across the surrounding countryside. Offering 882 sqft of living accommodation, the property also benefits from a front patio, rear garden and one off street parking space to the rear.

The ground floor comprises; Front aspect living room with log burning stove and stone hearth, open plan dining kitchen with under the stairs storage and conservatory with doors onto the front patio.

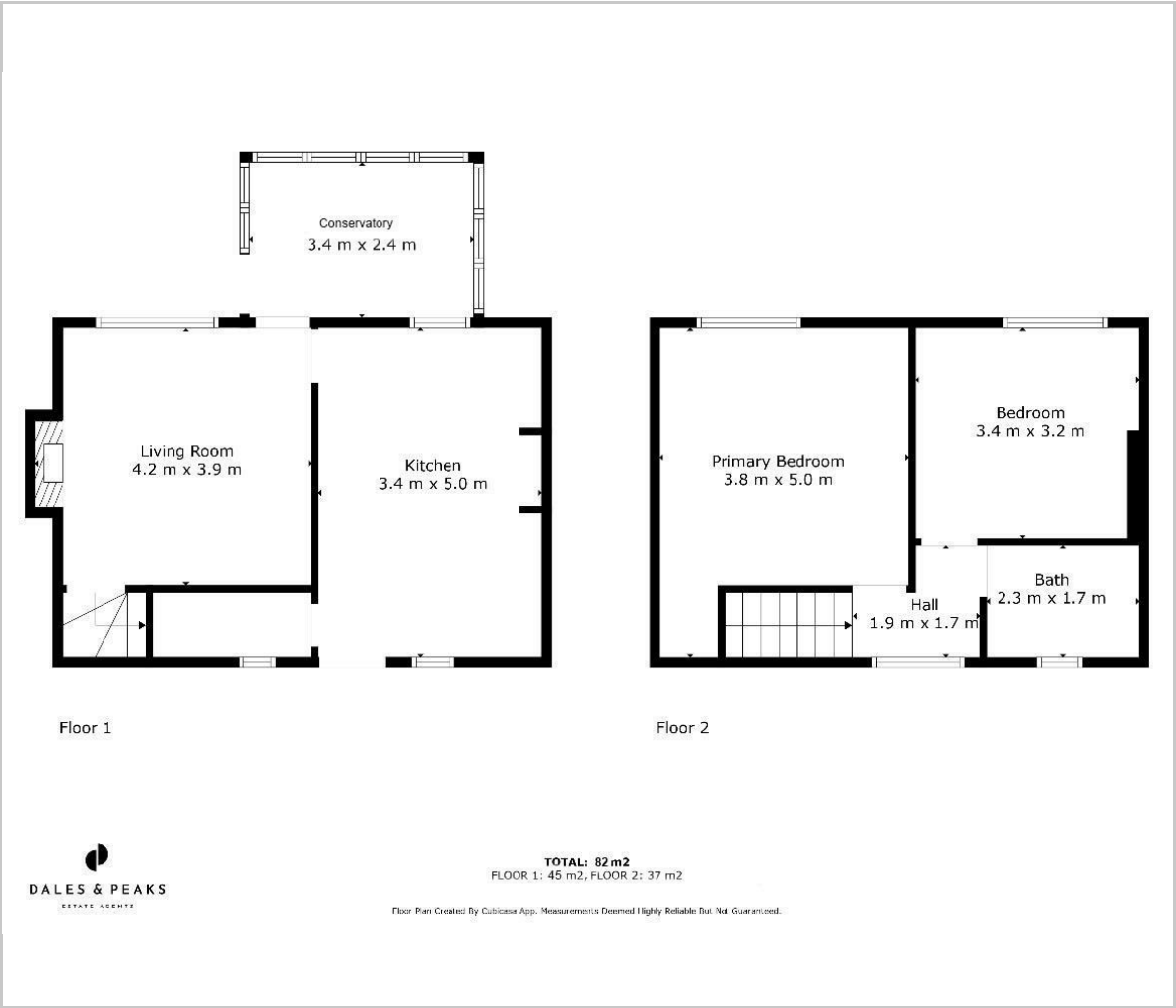
The first floor comprises; 2 generously proportioned bedrooms both with front aspect windows, taking advantage of the incredible views across Matlock and bathroom.

Dales and Peaks ForwardMove
- Please read





Floor Plan

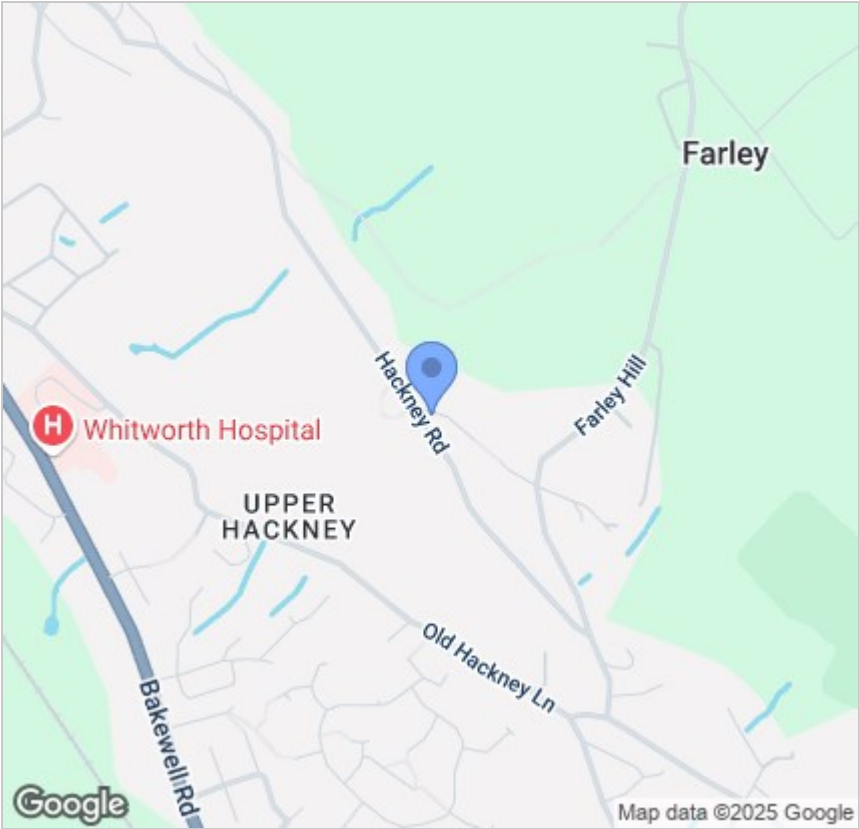


Viewing

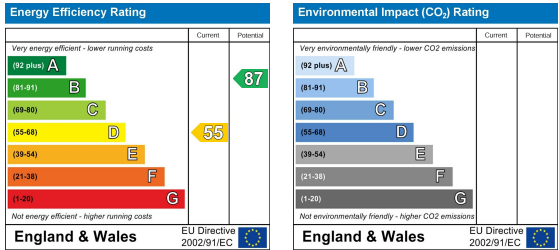
Please contact our Matlock Office on 01629 700246 if you wish to arrange a viewing appointment for this property or require further information.

These particulars, whilst believed to be accurate are set out as a general outline only for guidance and do not constitute any part of an offer or contract. Intending purchasers should not rely on them as statements of representation of fact, but must satisfy themselves by inspection or otherwise as to their accuracy. No person in this firms employment has the authority to make or give any representation or warranty in respect of the property.

Area Map



Energy Efficiency Graph



2 Dale Road, Matlock, Derbyshire, DE4 3LT
T: 01629 700246



E: info@dalesandpeaks.co.uk
www.dalesandpeaks.co.uk