



DALES & PEAKS



## Townend Farm and Wisteria Cottage Church Street

Bonsall, Matlock, DE4 2AE

£950,000



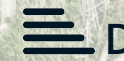
6



3



3



D



## Townend Farm and Bonsall, Matlock, DE4 2AE

A spacious 4 bedroom detached family home, offering 2066 sqft of accommodation over two storeys and benefitting from a 2 bedroom detached annex, ample off street parking, double garage and beautifully presented gardens with panoramic views. Townend Farm also benefits from approx 8.8 acres of land.

### Townend Farm

The ground floor comprises; Entrance porch with access through to the utility room, downstairs WC and storage. Open plan dining kitchen with integrated appliances and pantry, snug with log burning stove and dual aspect living room with second log burning stove.

The first floor comprises; Front aspect master bedroom with ensuite shower room and dressing room, 2 further double bedrooms, family bathroom and single bedroom.

### Wistertia Cottage

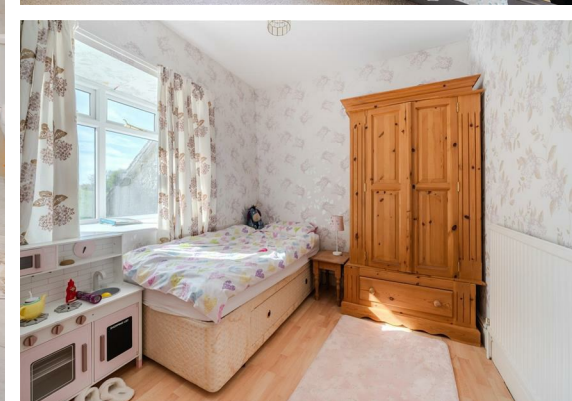
The ground floor comprises; Dining kitchen, living room, single bedroom and shower room.

The first floor comprises; Master bedroom with ensuite bathroom.

## Dales and Peaks ForwardMove - Please read









Floor Plan

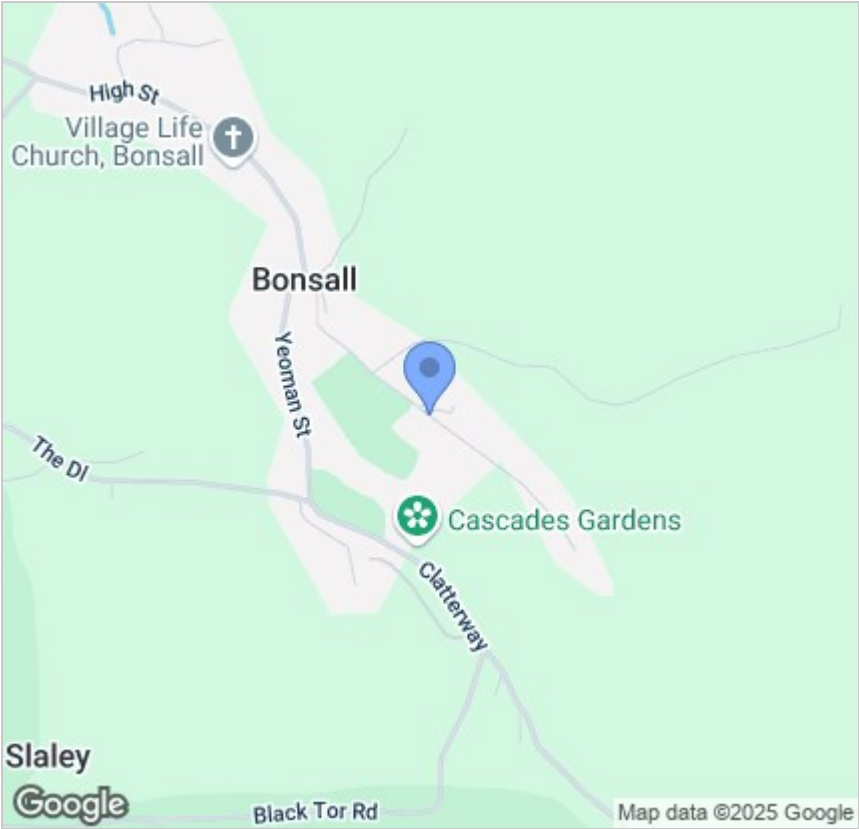


Viewing

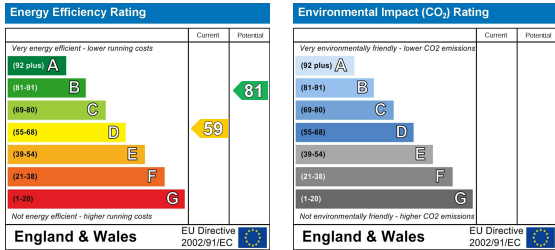
Please contact our Matlock Office on 01629 700246 if you wish to arrange a viewing appointment for this property or require further information.

These particulars, whilst believed to be accurate are set out as a general outline only for guidance and do not constitute any part of an offer or contract. Intending purchasers should not rely on them as statements of representation of fact, but must satisfy themselves by inspection or otherwise as to their accuracy. No person in this firms employment has the authority to make or give any representation or warranty in respect of the property.

Area Map



Energy Efficiency Graph



2 Dale Road, Matlock, Derbyshire, DE4 3LT  
T: 01629 700246



E: info@dalesandpeaks.co.uk  
www.dalesandpeaks.co.uk