



## Sullane Eaton Hill

Baslow, Bakewell, DE45 1SB

Guide Price £700,000





## Sullane Eaton Hill

Baslow, Bakewell, DE45 1SB

£700,000 - £725,000 (Guide price) Set in approx 0.38 acres, is this spectacular four double bedrooomed detached family home, offering opportunity to cosmetically update and 2411 sqft of living accommodation. Featuring a wrap around garden, ample off street parking and double garage.

The ground floor comprises; Entrance porch and hallway, triple aspect living room with gas fireplace, conservatory with access onto the exterior, formal dining room and kitchen with separate utility room. Snug/4th reception room and downstairs WC.

The second floor comprises; Master bedroom with ensuite shower room and dressing room, 2 further double bedrooms, family bathroom and double bedroom with balcony.

**Dales and Peaks ForwardMove**  
- Please read

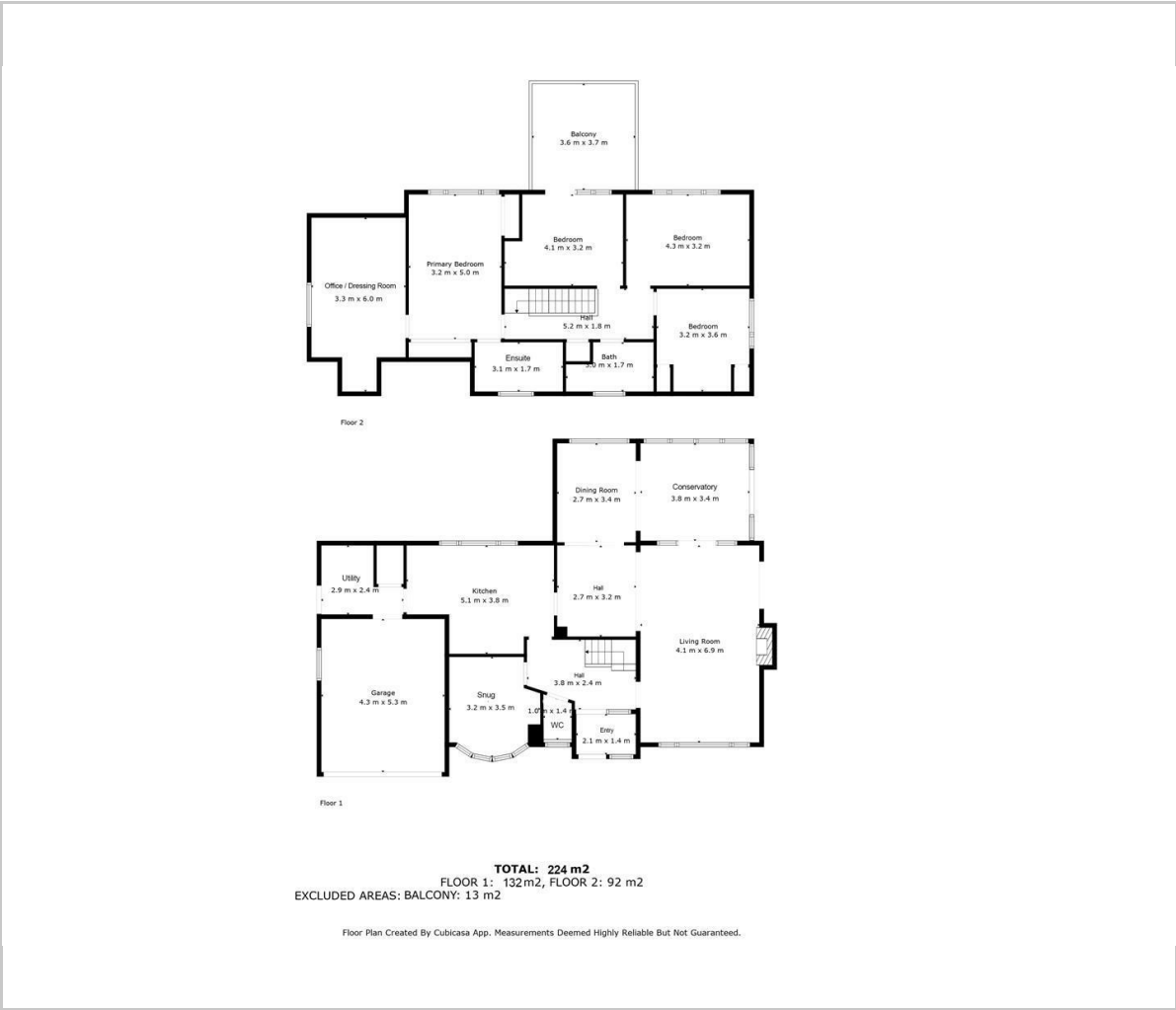








Floor Plan

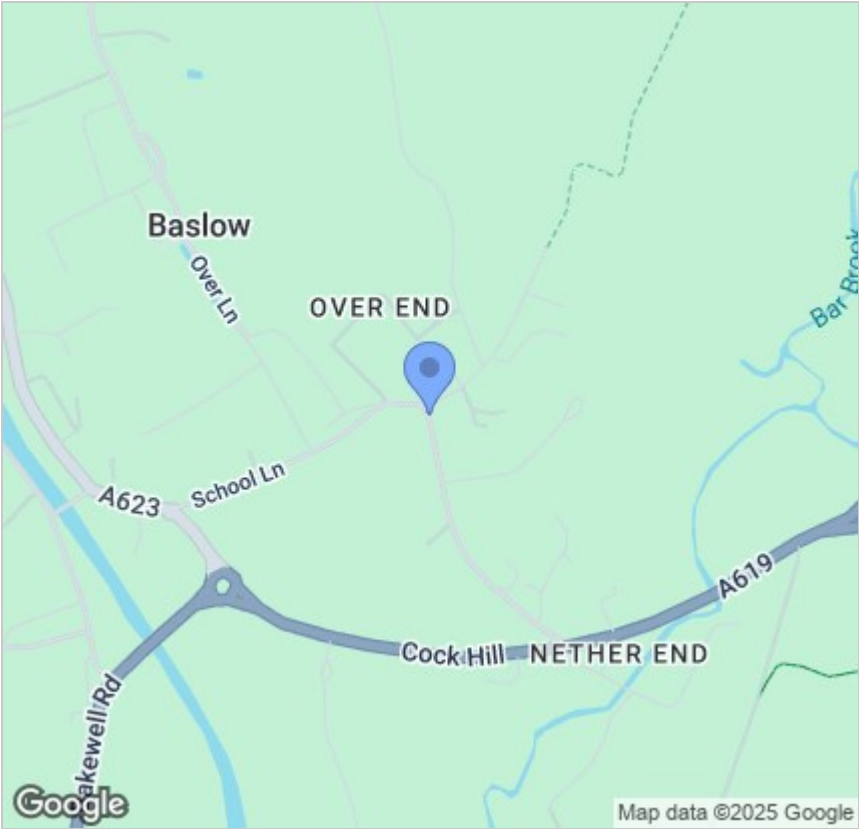


Viewing

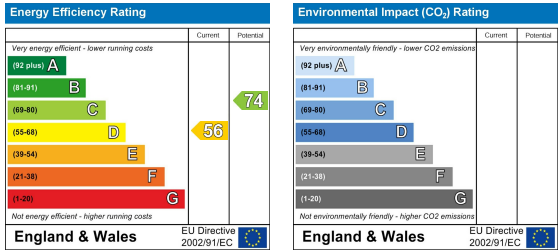
Please contact our Matlock Office on 01629 700246 if you wish to arrange a viewing appointment for this property or require further information.

These particulars, whilst believed to be accurate are set out as a general outline only for guidance and do not constitute any part of an offer or contract. Intending purchasers should not rely on them as statements of representation of fact, but must satisfy themselves by inspection or otherwise as to their accuracy. No person in this firms employment has the authority to make or give any representation or warranty in respect of the property.

Area Map



Energy Efficiency Graph



2 Dale Road, Matlock, Derbyshire, DE4 3LT  
T: 01629 700246



E: info@dalesandpeaks.co.uk  
www.dalesandpeaks.co.uk