



The Old Coach House Main Street
Birchover, Matlock, DE4 2BL
£1,000 PCM

The Old Coach House Main

Birchover, Matlock, DE4 2BL

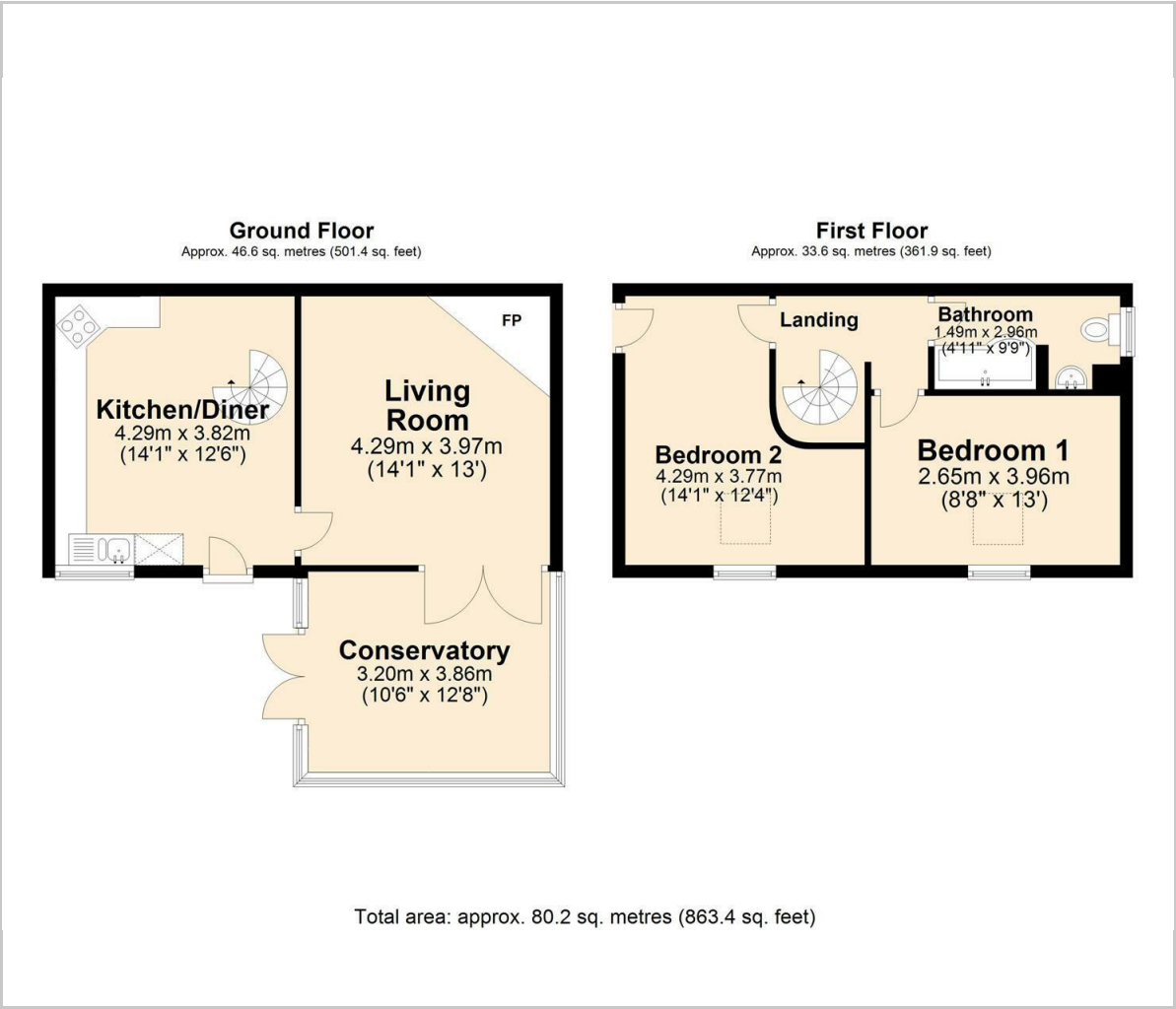
The Old Coach House is a charming rustic two bedroom cottage set in the extensive grounds of The Old Rectory in Birchover. The property offers 834 sqft of accommodation over two floors. There is a generously proportioned dining kitchen with plumbing for a washing machine and recently installed new oven. Good size lounge with multi fuel stove, new wooden flooring which extends into the pleasant conservatory overlooking a mature garden and far reaching views. There is a spiral staircase leading to the first floor which has two double bedrooms and a bathroom with a shower over the bath. Both bedrooms have new wooden floors.

Rental information





Floor Plan



Viewing

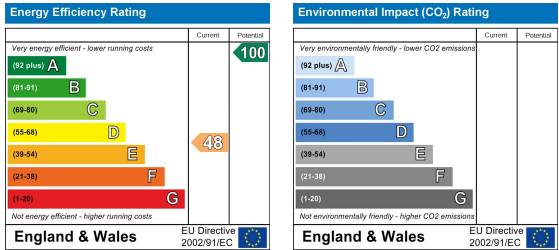
Please contact our Matlock Office on 01629 700246 if you wish to arrange a viewing appointment for this property or require further information.

These particulars, whilst believed to be accurate are set out as a general outline only for guidance and do not constitute any part of an offer or contract. Intending purchasers should not rely on them as statements of representation of fact, but must satisfy themselves by inspection or otherwise as to their accuracy. No person in this firms employment has the authority to make or give any representation or warranty in respect of the property.

Area Map



Energy Efficiency Graph



2 Dale Road, Matlock, Derbyshire, DE4 3LT
T: 01629 700246



E: info@dalesandpeaks.co.uk
www.dalesandpeaks.co.uk