



Northleigh Dale Road North

Darley Dale, Matlock, DE4 2HY

Guide Price £475,000



Northleigh Dale Road North

Darley Dale, Matlock, DE4 2HY

£475,000 - £495,000 (Guide price)

Occupying a generous plot with ample parking is this stylish, attractive and fully renovated 4 bedroom, 2 bathroom detached property. Sitting within its own gated, landscaped grounds, Northleigh offers a beautiful blend of period charm and modern touches, with light and flowing living accommodation, high ceilings and a en-suite master bedroom.

Externally Northleigh occupies a generous, gated plot with ample parking, outbuildings and landscaped grounds to incorporate a lawned area and al fresco dining area.

The ground floor comprises; Front aspect living room with log burning stove, a well proportioned and open plan dining kitchen with feature fireplace and bay window.

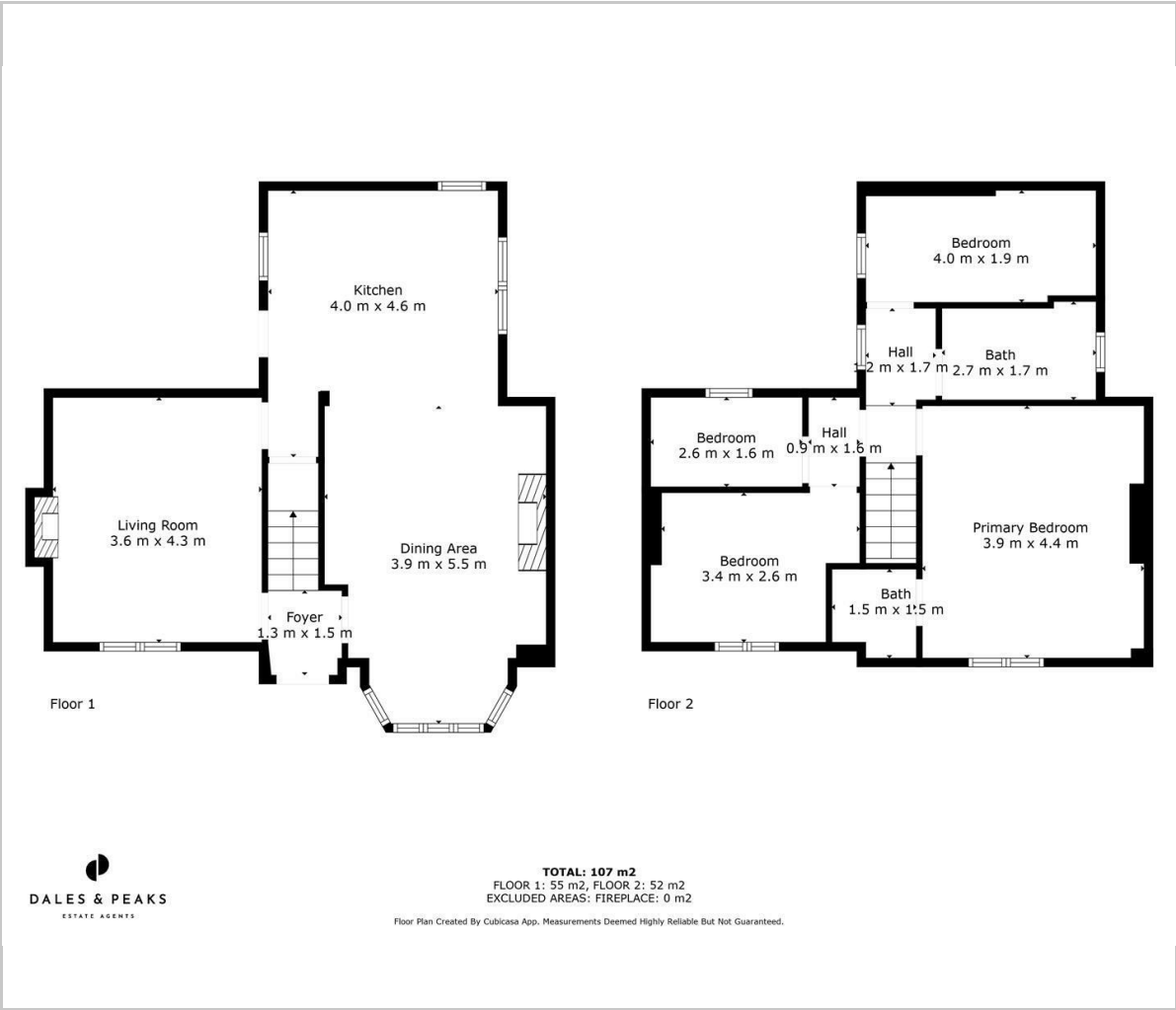
The first floor comprises; Master bedroom with ensuite shower room, a further double bedroom, main family bathroom and 2 single bedrooms.

Dales and Peaks ForwardMove
- Please read





Floor Plan

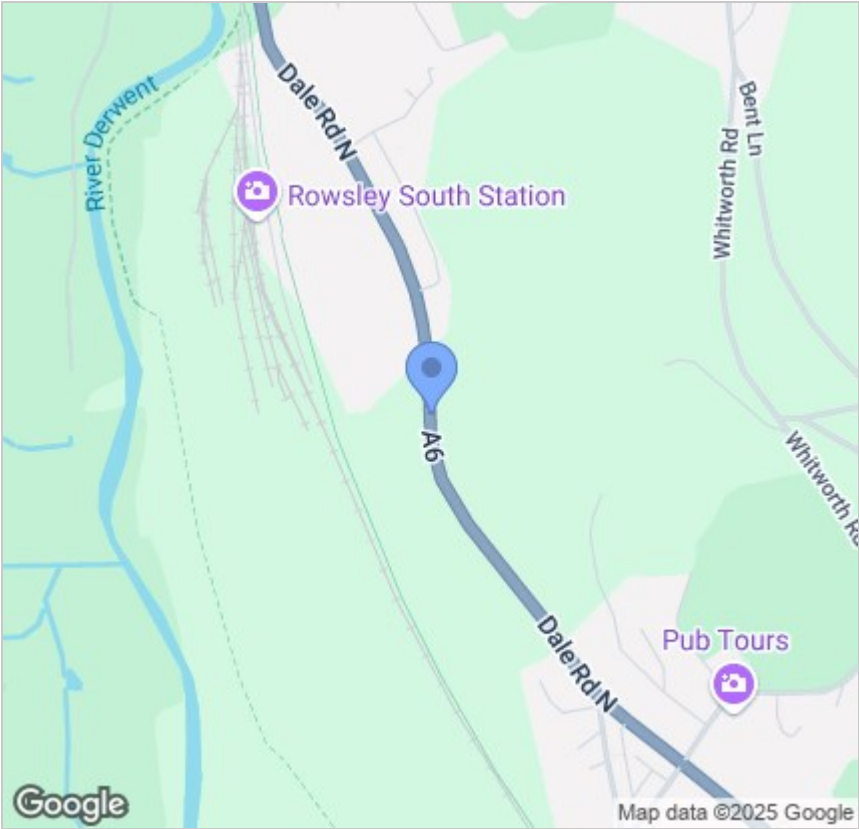


Viewing

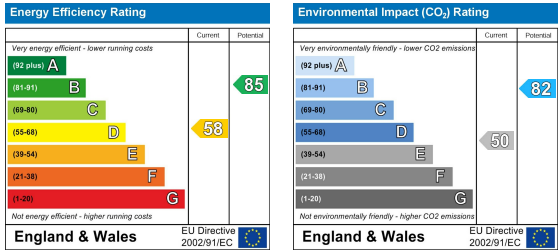
Please contact our Matlock Office on 01629 700246 if you wish to arrange a viewing appointment for this property or require further information.

These particulars, whilst believed to be accurate are set out as a general outline only for guidance and do not constitute any part of an offer or contract. Intending purchasers should not rely on them as statements of representation of fact, but must satisfy themselves by inspection or otherwise as to their accuracy. No person in this firms employment has the authority to make or give any representation or warranty in respect of the property.

Area Map



Energy Efficiency Graph



2 Dale Road, Matlock, Derbyshire, DE4 3LT
T: 01629 700246



E: info@dalesandpeaks.co.uk
www.dalesandpeaks.co.uk