



## Sunnyside Darley House Estate

Hackney, Matlock, DE4 2QH

£325,000





## Sunnyside Darley House

Hackney, Matlock, DE4 2QH

A deceptively spacious and beautifully presented 3 bedroom detached property, offering 1119 sqft of living accommodation. Sunnyside features a rear garden with decked seating area, off street parking and scenic views of the surrounding countryside.

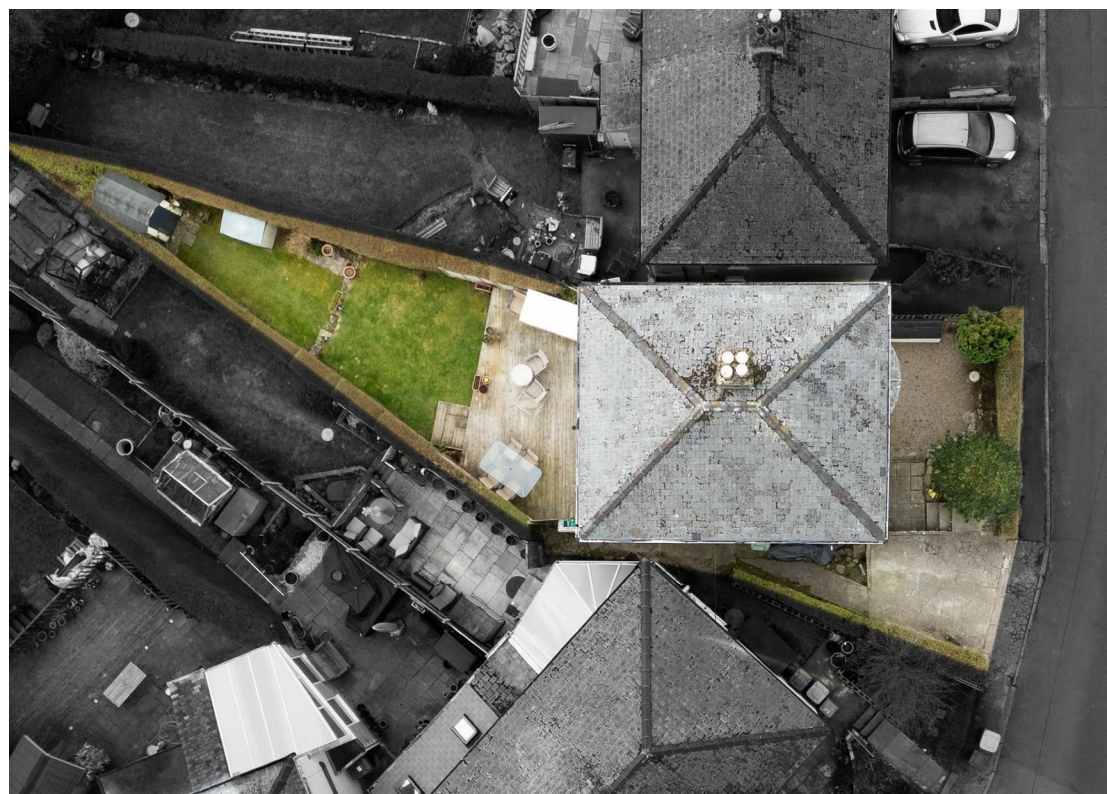
The ground floor comprises; Entrance hallway with tiled flooring, front aspect living room with log burning stove and bay window, open plan dining kitchen with breakfast bar and access onto the garden.

The first floor comprises; Two double bedrooms, both with fantastic views, a single bedroom and main bathroom.

**Dales and Peaks ForwardMove**  
- Please read

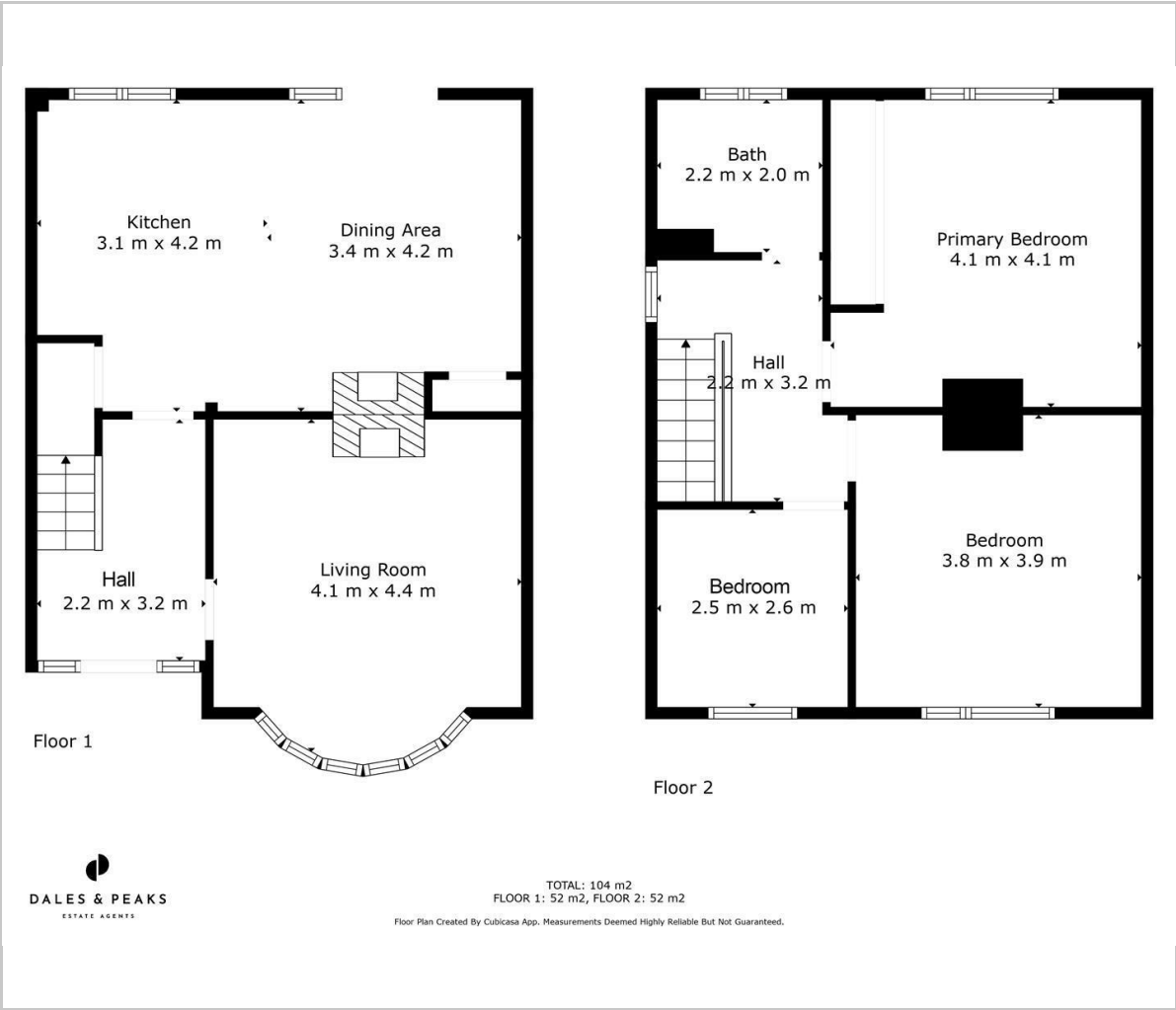








Floor Plan



Viewing

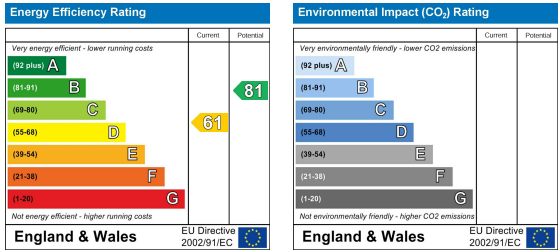
Please contact our Matlock Office on 01629 700246 if you wish to arrange a viewing appointment for this property or require further information.

These particulars, whilst believed to be accurate are set out as a general outline only for guidance and do not constitute any part of an offer or contract. Intending purchasers should not rely on them as statements of representation of fact, but must satisfy themselves by inspection or otherwise as to their accuracy. No person in this firms employment has the authority to make or give any representation or warranty in respect of the property.

Area Map



Energy Efficiency Graph



2 Dale Road, Matlock, Derbyshire, DE4 3LT  
T: 01629 700246



E: info@dalesandpeaks.co.uk  
www.dalesandpeaks.co.uk