



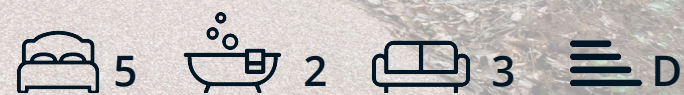
DALES & PEAKS



The Orchard 12 Greenaway Lane

Hackney, Matlock, DE4 2QB

£625,000



The Orchard 12 Greenaway

Hackney, Matlock, DE4 2QB

A substantial stone built 5 bedroom detached property, enjoying picturesque views of the surrounding countryside. Offering a deceptive 2260 sqft of accommodation over two storeys the property features well proportioned rooms, garden to the rear, ample off street parking and double garage.

The ground floor comprises; A spacious entrance hallway, front aspect living room, formal dining room, dining kitchen with access into the double garage and separate utility room. Downstairs WC, third reception room or study and porch to the rear.

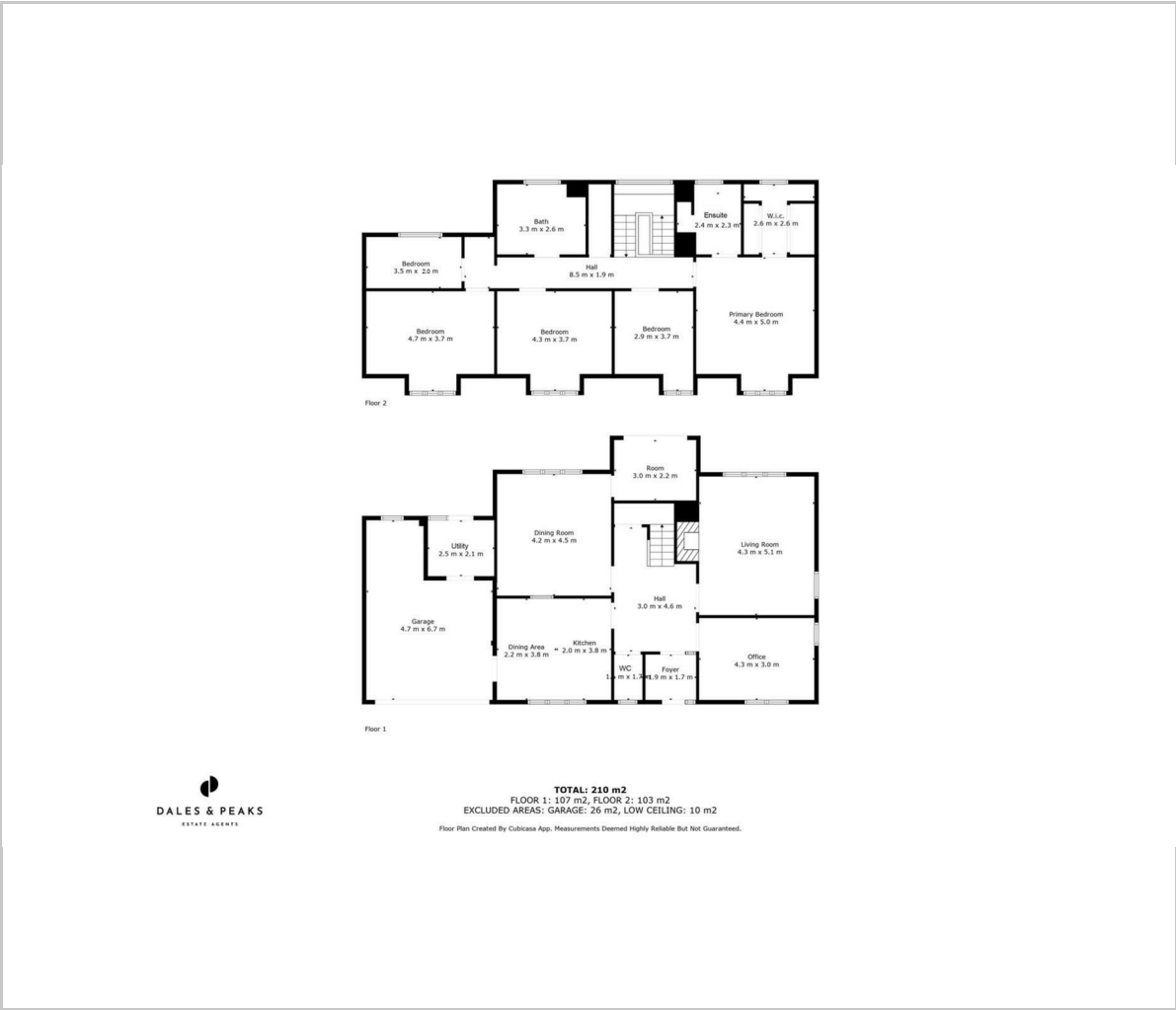
The first floor comprises; Master bedroom with walk in wardrobes and ensuite, 3 further front aspect double bedrooms and optional 5th bedroom/study.

Dales and Peaks ForwardMove
- Please read





Floor Plan



Viewing

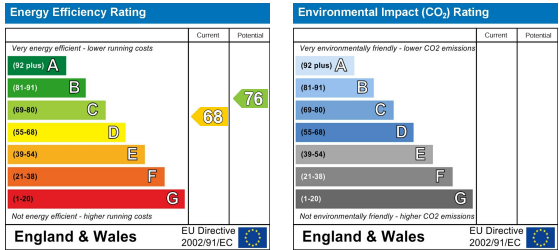
Please contact our Matlock Office on 01629 700246 if you wish to arrange a viewing appointment for this property or require further information.

These particulars, whilst believed to be accurate are set out as a general outline only for guidance and do not constitute any part of an offer or contract. Intending purchasers should not rely on them as statements of representation of fact, but must satisfy themselves by inspection or otherwise as to their accuracy. No person in this firms employment has the authority to make or give any representation or warranty in respect of the property.

Area Map



Energy Efficiency Graph



2 Dale Road, Matlock, Derbyshire, DE4 3LT
T: 01629 700246



E: info@dalesandpeaks.co.uk
www.dalesandpeaks.co.uk