



6 Hopewell Road
, Matlock, DE4 3JN

Guide Price £190,000



6 Hopewell Road

, Matlock, DE4 3JN

£190,000 - £200,000 (Guide price) A stylish, bay-fronted period property, that has been meticulously and thoughtfully modernised, complimenting the property's original period features with contemporary interior design throughout, situated within close proximity of the centre of Matlock.

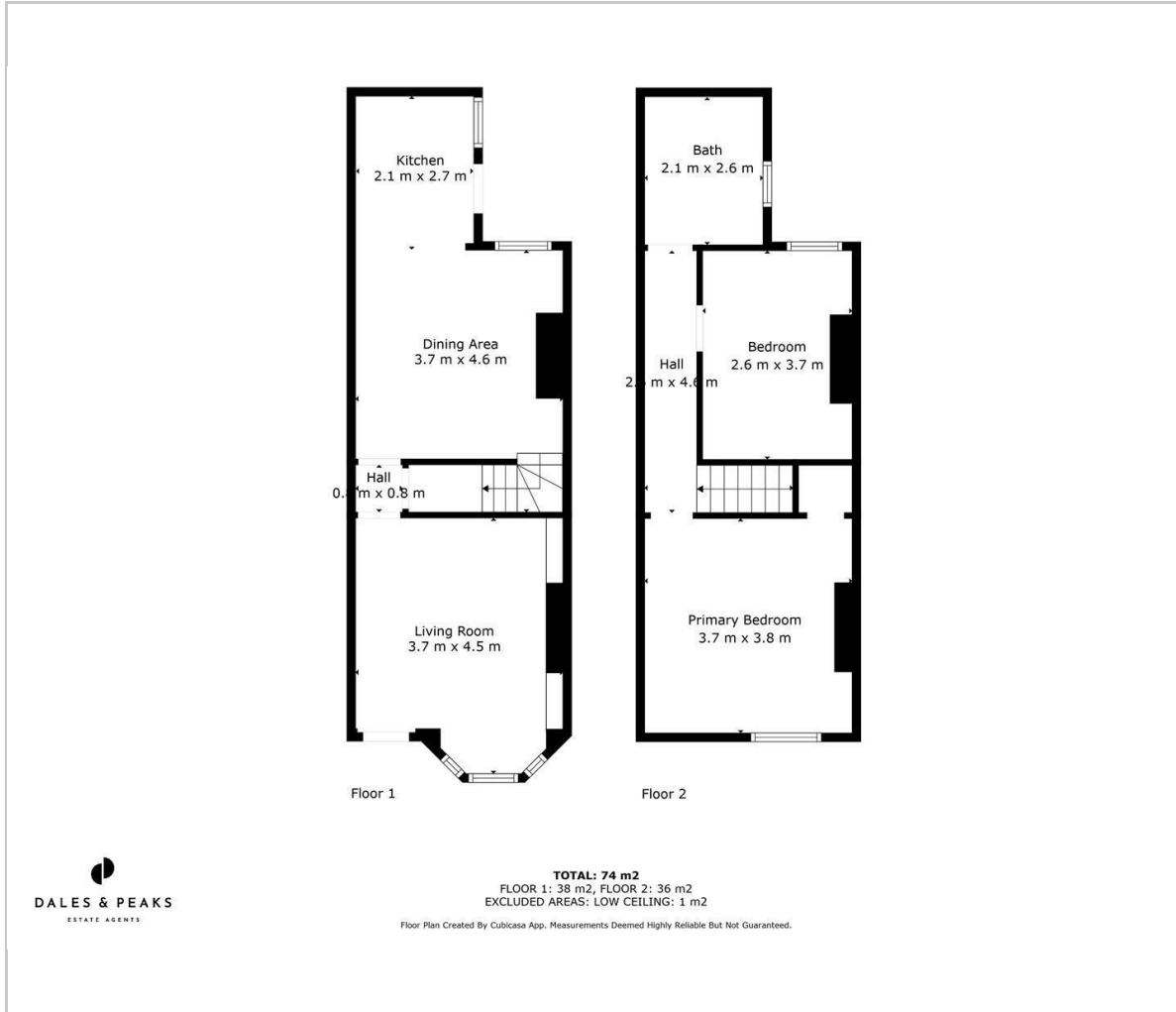
Offering a deceptive 796 sqft of accommodation over two storeys the property features; a bay-fronted family living room, modern open plan dining kitchen, bathroom with bath and separate shower, two double bedrooms with feature fireplaces and low maintenance rear garden.

Dales and Peaks ForwardMove
- Please read





Floor Plan

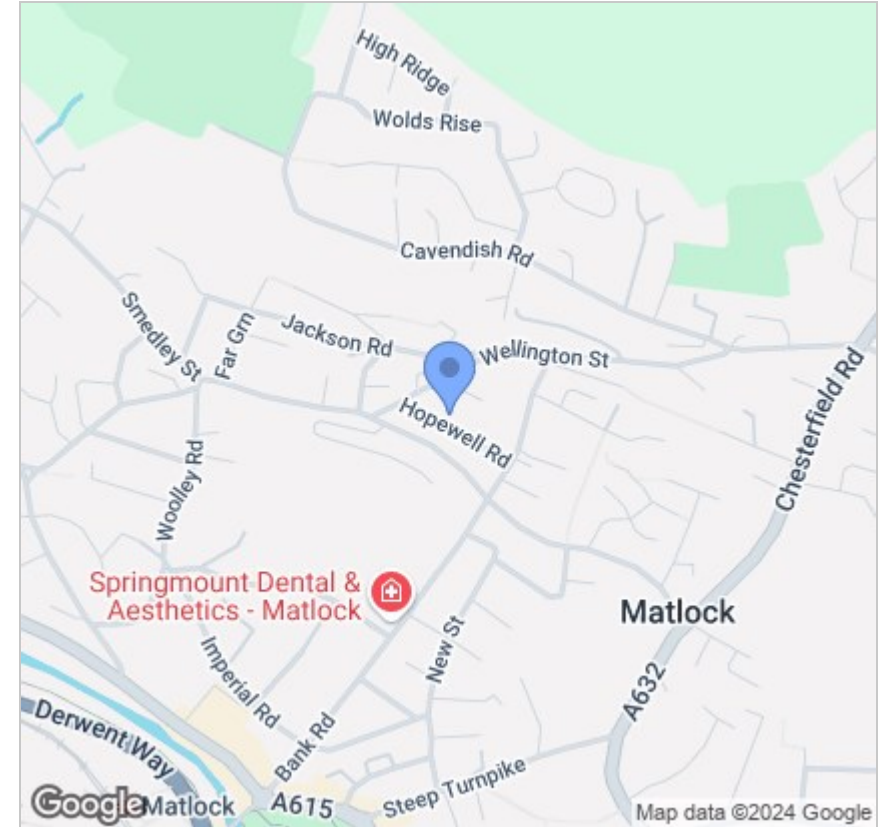


Viewing

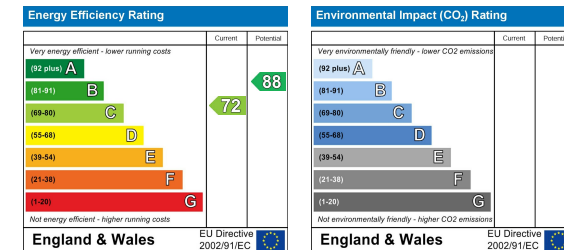
Please contact our Matlock Office on 01629 700246 if you wish to arrange a viewing appointment for this property or require further information.

These particulars, whilst believed to be accurate are set out as a general outline only for guidance and do not constitute any part of an offer or contract. Intending purchasers should not rely on them as statements of representation of fact, but must satisfy themselves by inspection or otherwise as to their accuracy. No person in this firm's employment has the authority to make or give any representation or warranty in respect of the property.

Area Map



Energy Efficiency Graph



2 Dale Road, Matlock, Derbyshire, DE4 3LT
 T: 01629 700246



E: info@dalesandpeaks.co.uk
 www.dalesandpeaks.co.uk