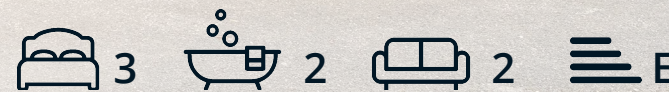




15 Sycamore Road
, Matlock, DE4 3HZ

Guide Price £475,000



15 Sycamore Road

, Matlock, DE4 3HZ

£475,000 - £500,000 (Guide price)
Situated in a highly desirable location, within close proximity of local amenities, is this 3 bedroom detached property. Enjoying scenic views and boasting a wealth of period features throughout its 1323 sqft of living accommodation whilst benefitting from two reception rooms, front and rear gardens and off street parking.

The ground floor comprises; Entrance hallway with original tiled floors, well proportioned front aspect living room with log burning stove, second reception room with open fireplace, dining kitchen and downstairs shower room.

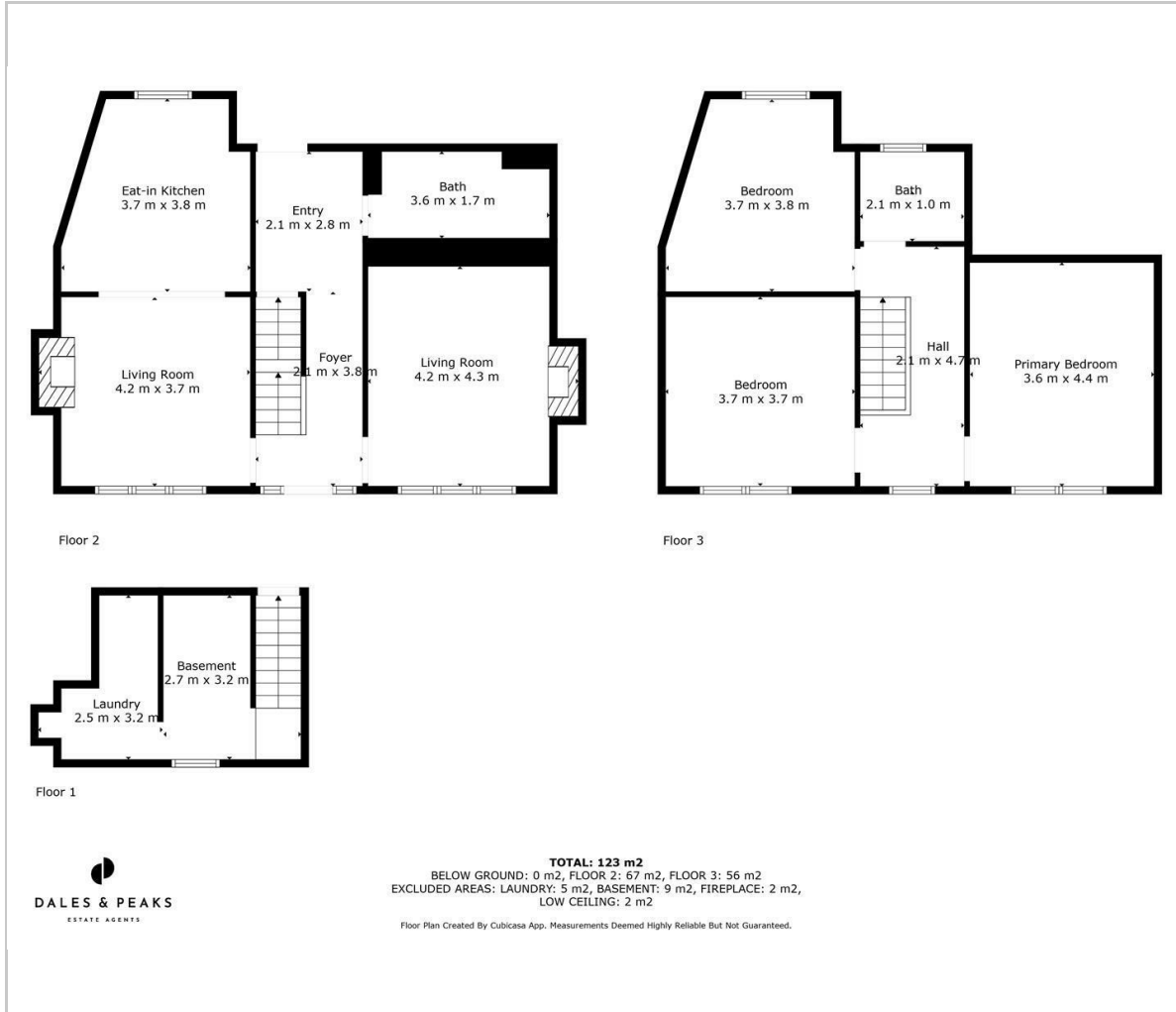
The first floor comprises; Two front aspect double bedrooms with feature fireplaces, a third double bedroom to the rear and main family bathroom.

Dales and Peaks ForwardMove
- Please read

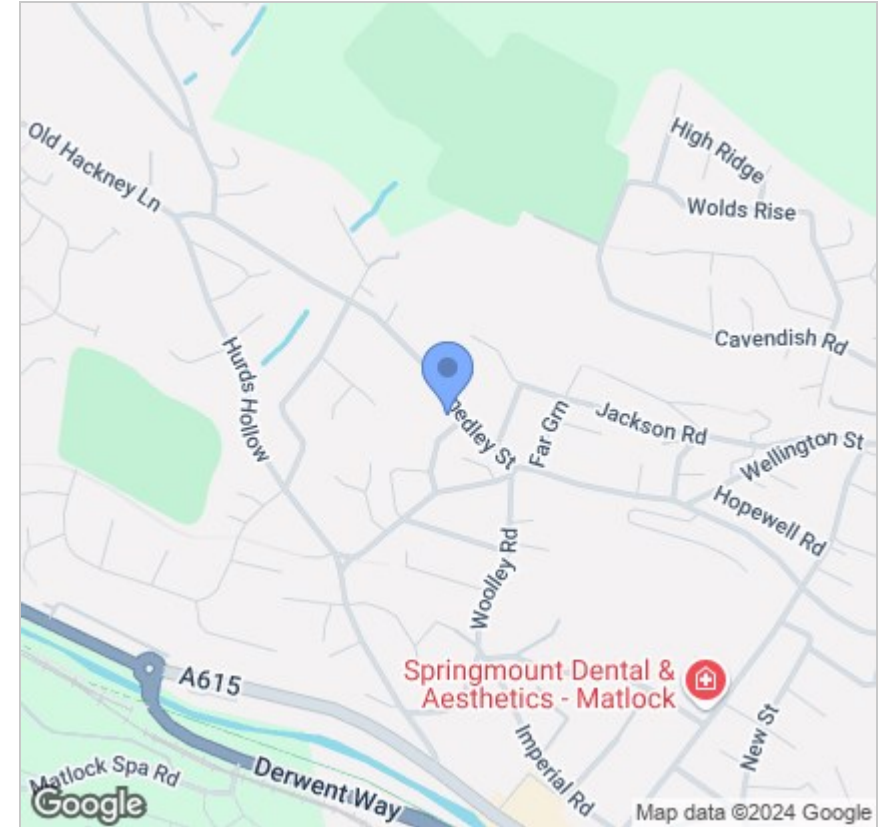




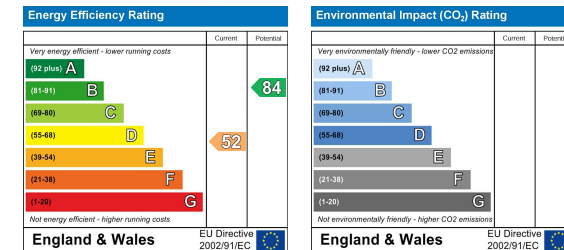
Floor Plan



Area Map



Energy Efficiency Graph



Viewing

Please contact our Matlock Office on 01629 700246 if you wish to arrange a viewing appointment for this property or require further information.

These particulars, whilst believed to be accurate are set out as a general outline only for guidance and do not constitute any part of an offer or contract. Intending purchasers should not rely on them as statements of representation of fact, but must satisfy themselves by inspection or otherwise as to their accuracy. No person in this firm's employment has the authority to make or give any representation or warranty in respect of the property.



2 Dale Road, Matlock, Derbyshire, DE4 3LT
 T: 01629 700246

E: info@dalesandpeaks.co.uk
 www.dalesandpeaks.co.uk