



Willersley Cottage Willersley Lane

Cromford, Matlock, DE4 5JG

£550,000



Willersley Cottage

Cromford, Matlock, DE4 5JG

Occupying an elevated position and forming part of the Arkwright Willersley Estate and dating back to the 18th Century, is this generously proportioned 4 double bedroom property steeped in local history. Benefitting from 2054 sqft of living accommodation, the property features enclosed landscaped gardens, ample off street parking and a double garage.

The ground floor comprises; Entrance porch, front aspect living room with log burning stove and patio doors, formal dining room, dining kitchen, separate snug with second log burning stove. Home office, utility room and downstairs WC.

The first floor comprises; Four double bedrooms and family bathroom.

Externally; To the front of the property is a sweeping driveway providing ample off street parking and access to the large stone garage. In turn there is a lawned garden incorporating a range of well stocked flowering and herbaceous borders with gravelled and stone flagged patio areas. To the side of the garage is a useful outside wood store.

To the rear of the property is a well proportioned courtyard garden with stone flagged patio areas and an extensive range of established borders. The garden enjoys a south westerly aspect, a stone garden store and wood fired pizza oven.



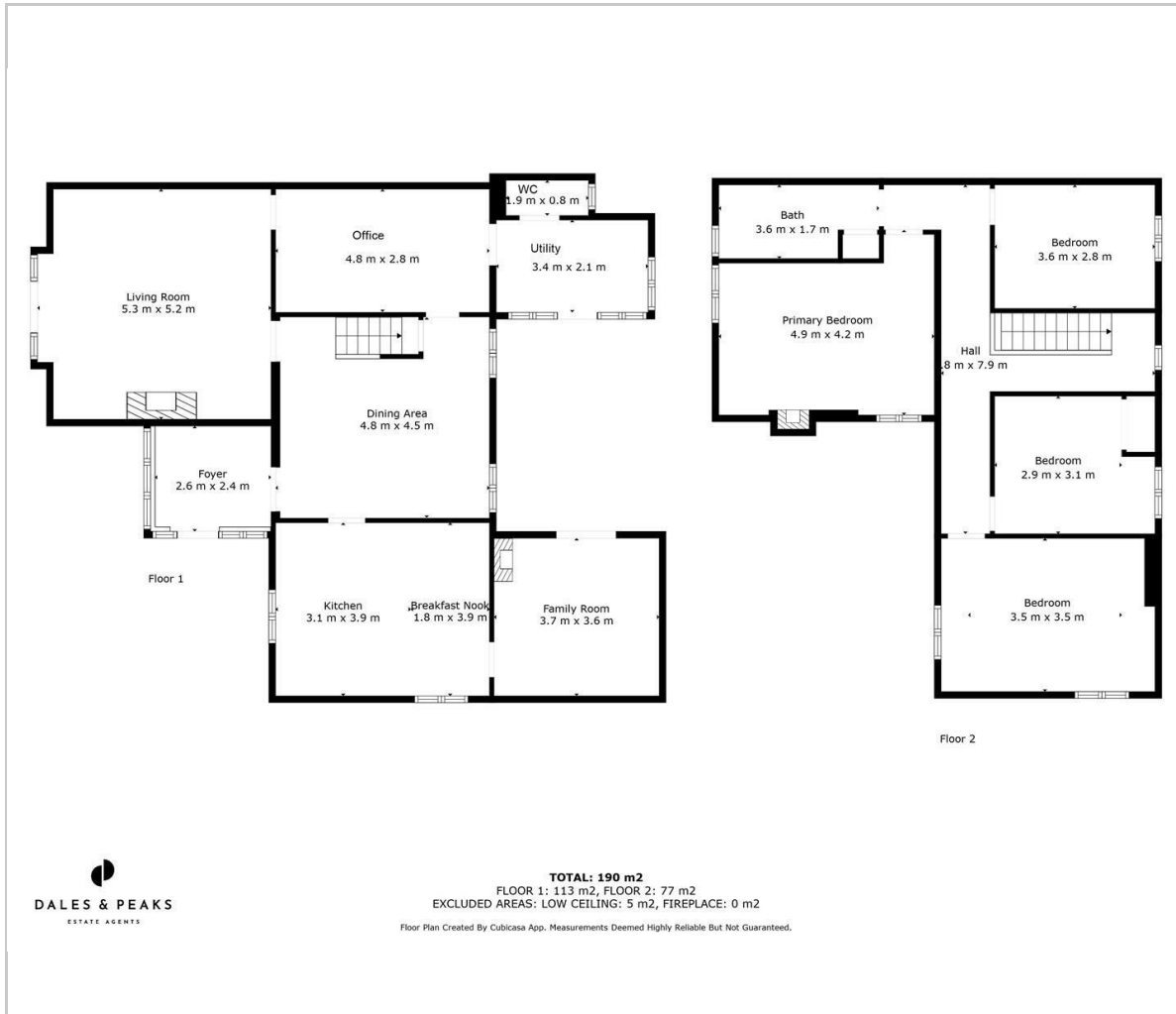


Stone Garage - Having power and lighting.

**Dales and Peaks ForwardMove
- Please read**



Floor Plan

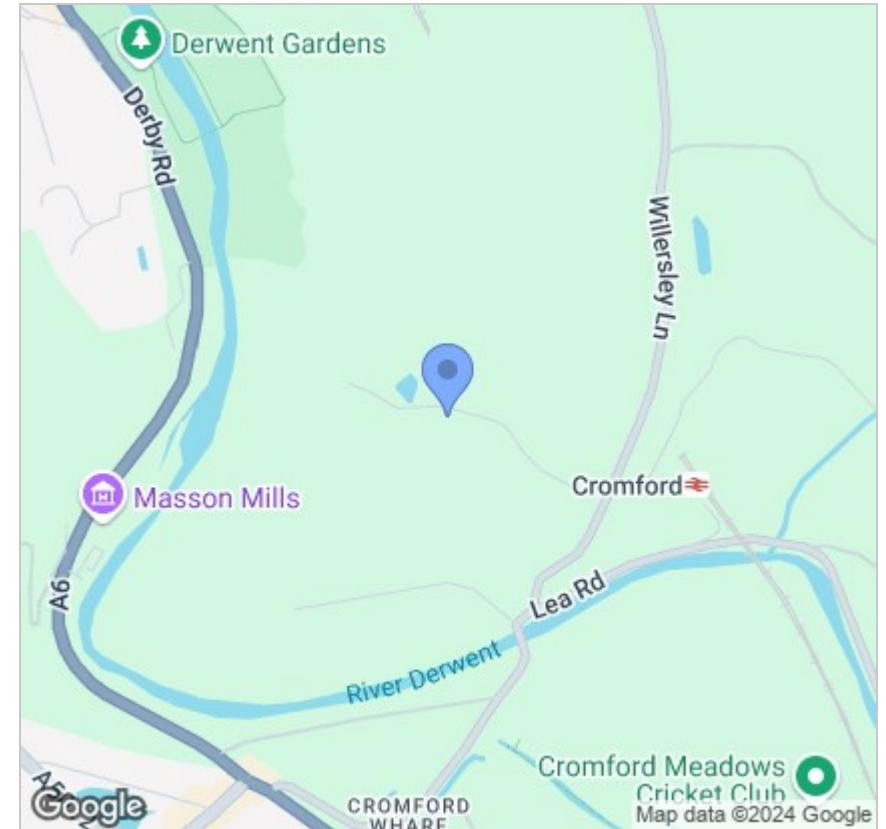


Viewing

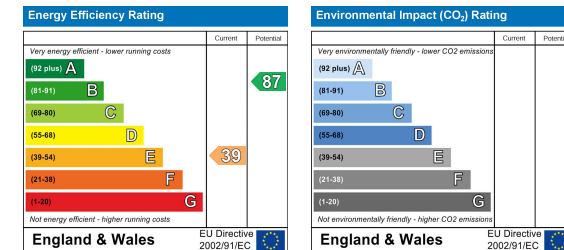
Please contact our Matlock Office on 01629 700246 if you wish to arrange a viewing appointment for this property or require further information.

These particulars, whilst believed to be accurate are set out as a general outline only for guidance and do not constitute any part of an offer or contract. Intending purchasers should not rely on them as statements of representation of fact, but must satisfy themselves by inspection or otherwise as to their accuracy. No person in this firm's employment has the authority to make or give any representation or warranty in respect of the property.

Area Map



Energy Efficiency Graph



2 Dale Road, Matlock, Derbyshire, DE4 3LT
 T: 01629 700246



E: info@dalesandpeaks.co.uk
 www.dalesandpeaks.co.uk