



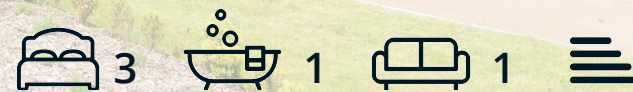
DALES & PEAKS



Ribber Castle Estate

Ribber, Matlock, DE4 5JU

£495,000



Riber Castle Estate

Riber, Matlock, DE4 5JU

For over 160 years Riber Castle has dominated the landscape above Matlock, today 26 lucky buyers will be able to call it their home. Become part of this incredible building's future history.

Apartment 17

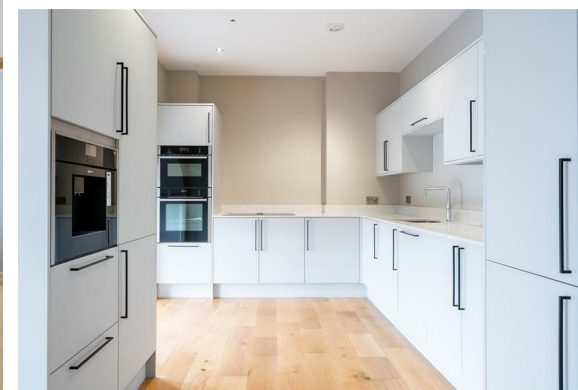
This duplex apartment, situated on the first and second floor of Riber Castle, offers a unique blend of historic charm and modern sophistication. Large entrance hall featuring galleried doors.

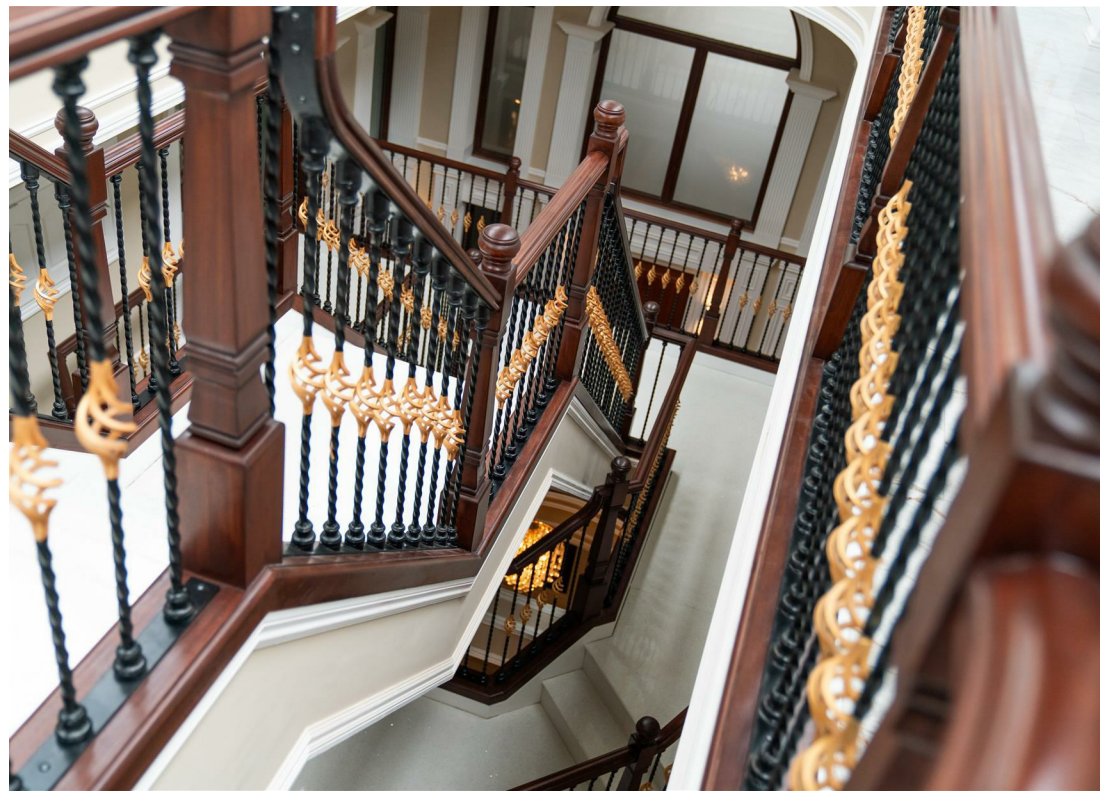
The three bedrooms offer stunning viewings via large windows, perfect for letting in lots of natural light and taking in vistas of the Derbyshire hills. The family bathroom, providing ample space and comfort for family and guests.

The second floor invites you into a spacious, open-plan dining and living area. The expansive, modern kitchen is perfectly positioned for hosting guests or simply relaxing while enjoying the breathtaking views of the Derbyshire countryside through large windows.

The specification has been carefully considered with high quality fixtures and fittings in abundance throughout the property, highlights include high skirting boards, decorative cornice and ceiling mouldings, bespoke kitchens including island unit, composite worktops and Siemens appliances. Timber flooring to the living areas and carpeted bedrooms whilst the well-appointed bath and shower rooms are fully tiled.

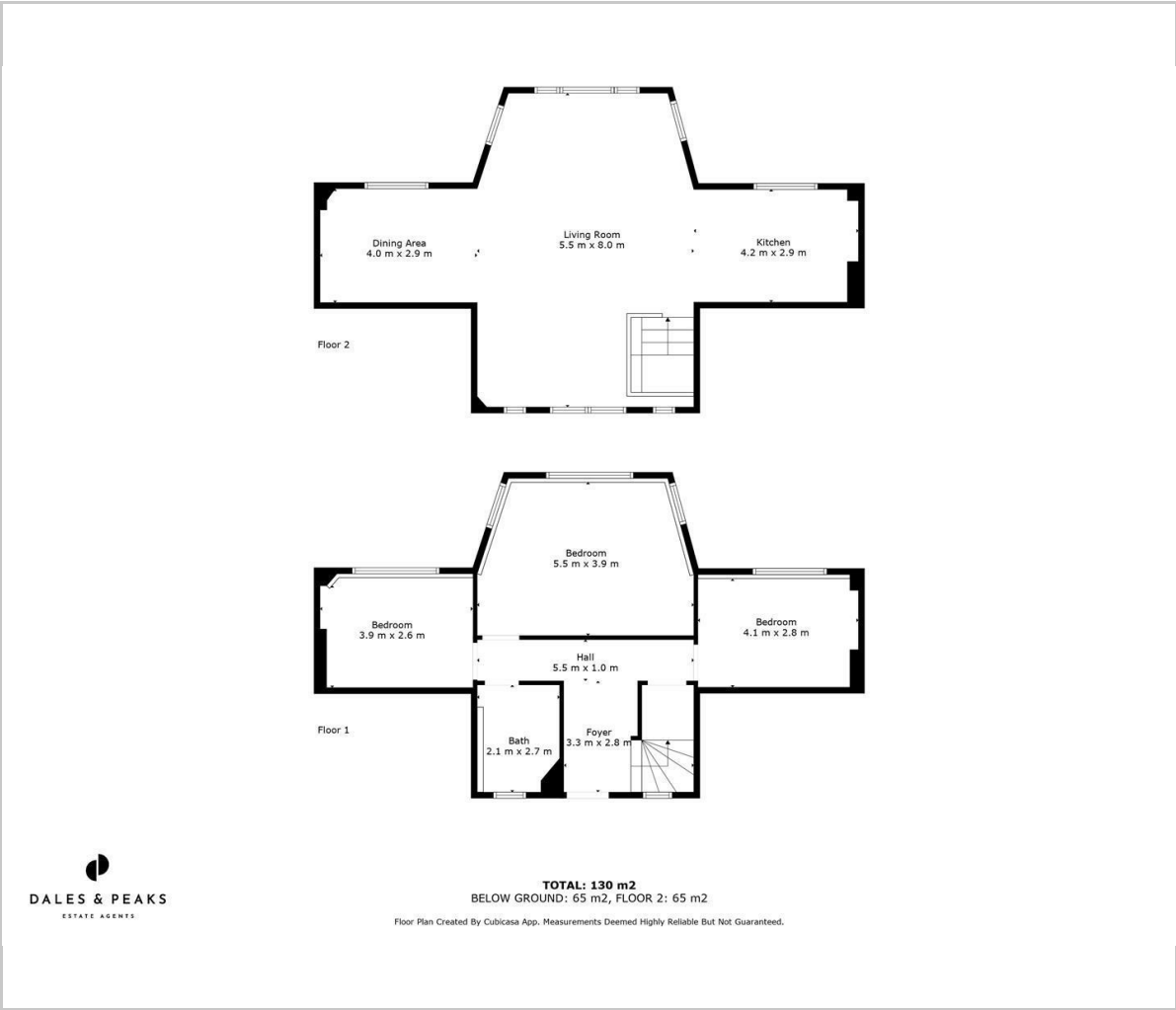
The property comes with two allocated parking spaces and access to the beautiful communal grounds. Access to the Castle Apartment is via a secure gated entrance. Heating and hot water is provided via a centralised heat and power plant which is individually metered to each property.





The History Of Ribber Castle
About This Property
The Ribber Castle Apartments
General Information :
Local Information
Additional Information

Floor Plan

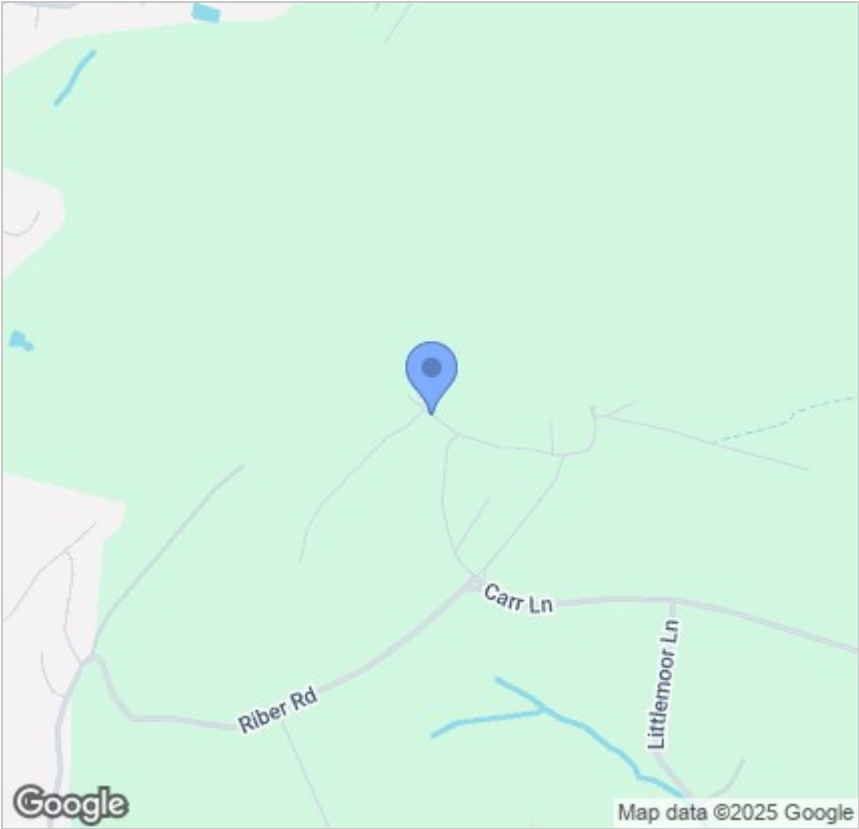


Viewing

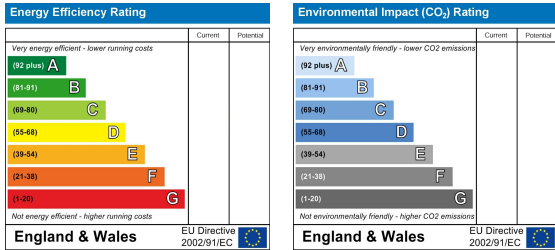
Please contact our Matlock Office on 01629 700246 if you wish to arrange a viewing appointment for this property or require further information.

These particulars, whilst believed to be accurate are set out as a general outline only for guidance and do not constitute any part of an offer or contract. Intending purchasers should not rely on them as statements of representation of fact, but must satisfy themselves by inspection or otherwise as to their accuracy. No person in this firms employment has the authority to make or give any representation or warranty in respect of the property.

Area Map



Energy Efficiency Graph



2 Dale Road, Matlock, Derbyshire, DE4 3LT
T: 01629 700246



E: info@dalesandpeaks.co.uk
www.dalesandpeaks.co.uk