



**Riber Castle Estate**  
Riber, Matlock, DE4 5JU  
£600,000

## Riber Castle Estate

Riber, Matlock, DE4 5JU

For over 160 years Riber Castle has dominated the landscape above Matlock, today 26 lucky buyers will be able to call it their home. Become part of this incredible building's future history.

### Apartment 8

Centrally positioned in the north bay enjoying an elevated first floor position, this spacious apartment is both beautifully social and incredibly practical, whilst enjoying breath taking views straight up the Riber Valley out its large arched window.

This stylish 2 bedroom apartment features ample storage, a modern kitchen with integrated appliances and quartz worktops, a stunning open plan living and dining space and on the lower floor, 2 generously sized bedrooms and 2 bathrooms including the master en-suite.

### The History Of Riber Castle

### About This Property

### The Riber Castle Apartments

### General Information :

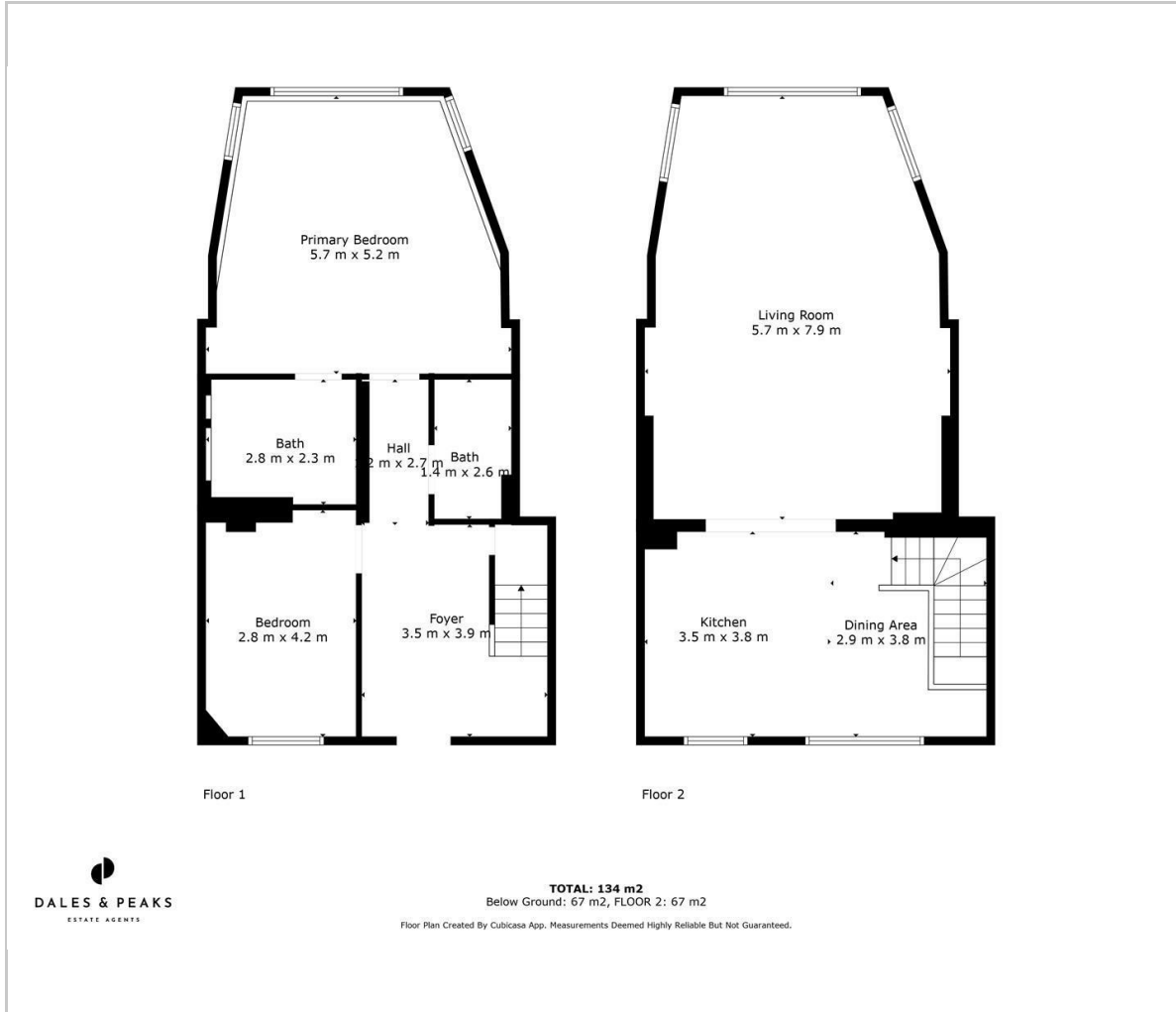
### Local Information

### Additional Information





## Floor Plan



## Viewing

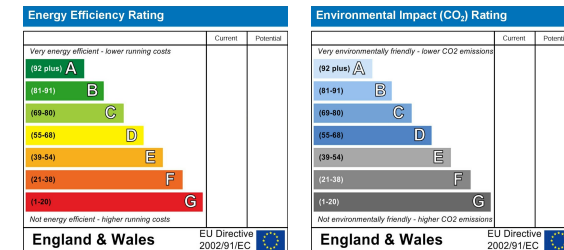
Please contact our Matlock Office on 01629 700246 if you wish to arrange a viewing appointment for this property or require further information.

These particulars, whilst believed to be accurate are set out as a general outline only for guidance and do not constitute any part of an offer or contract. Intending purchasers should not rely on them as statements of representation of fact, but must satisfy themselves by inspection or otherwise as to their accuracy. No person in this firm's employment has the authority to make or give any representation or warranty in respect of the property.

## Area Map



## Energy Efficiency Graph



2 Dale Road, Matlock, Derbyshire, DE4 3LT  
T: 01629 700246

E: info@dalesandpeaks.co.uk  
www.dalesandpeaks.co.uk