



RIBER CASTLE

1862 - 2024

06

INTRODUCTION

08

ABOUT THE AREA

12

THE HISTORY OF RIBER CASTLE

24

METICULOUS RESTORATION

30

THE APARTMENTS

46

LUXURIOUS LIFESTYLE

88

SCHEDULE A VIEWING

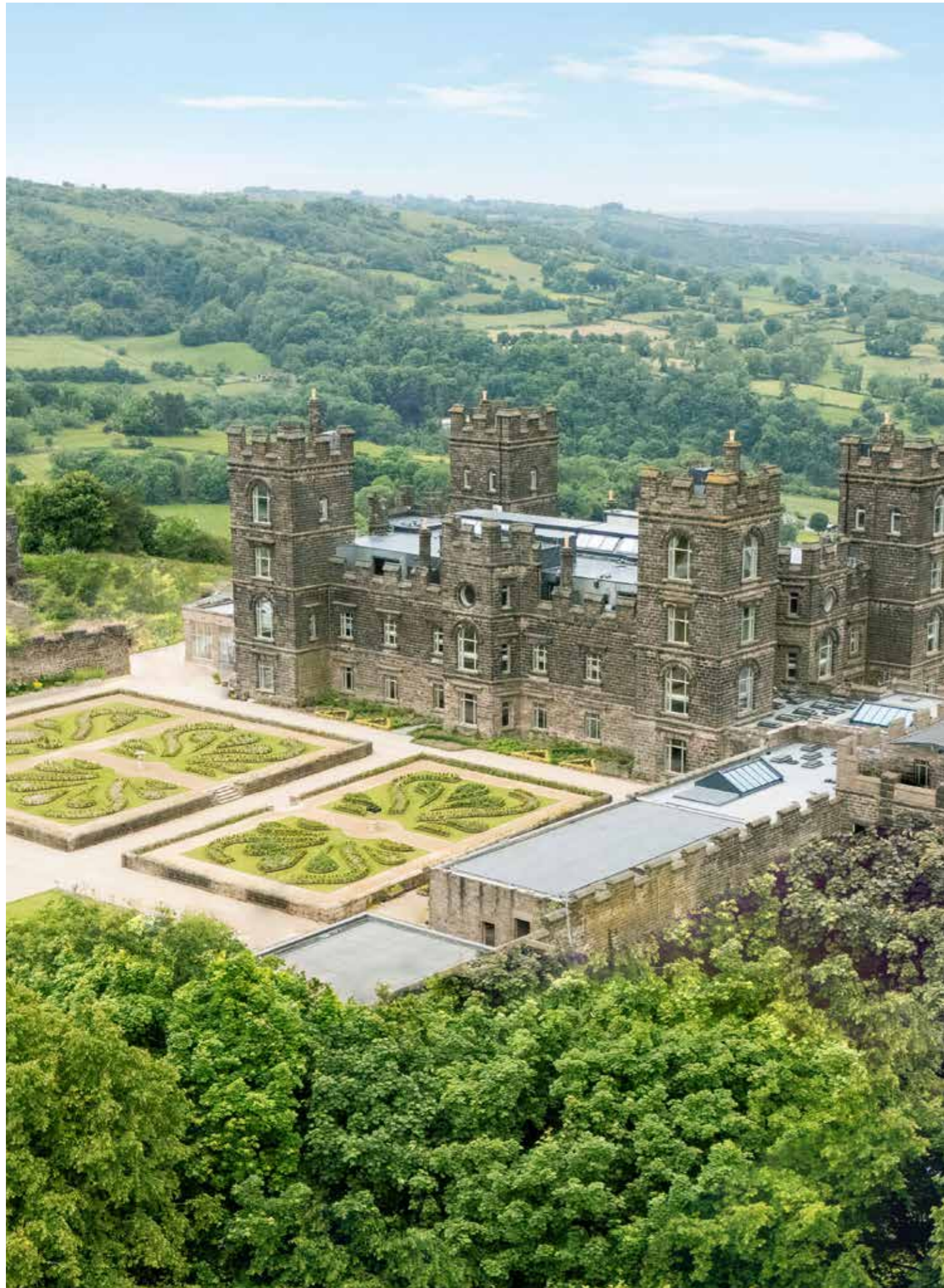


WELCOME
TO RIBER CASTLE,
HISTORIC ELEGANCE
REIMAGINED



A GRADE II LISTED VICTORIAN
MANSION THAT HAS BEEN
LOVINGLY AND PAINSTAKINGLY
RESTORED AND CONVERTED
TO 26 LUXURY APARTMENTS
OVER THE PAST 20 YEARS.





INTRODUCTION

Discover the unparalleled charm and elegance of Apartment 1 to 26 Ribber Castle. Situated atop one of Derbyshire's highest peaks, this magnificent castle offers a unique opportunity to own a piece of English history, meticulously renovated to blend timeless heritage with modern luxury.



DISCOVER THE CHARM OF MATLOCK



Situated above the picturesque town of Matlock, Riber Castle is surrounded by the natural beauty and tranquillity of the rolling Derbyshire countryside. Matlock is renowned for its historic baths, scenic landscapes, vibrant community, and rich history.








The town offers a perfect blend of rural charm and modern conveniences, with a variety of shops, restaurants, and cultural attractions, including a Marks & Spencer Foodhall and unique independent boutiques. The nearby Peak District National Park provides endless opportunities for outdoor activities such as hiking, cycling, and horse riding, making it an ideal location for those who appreciate nature and adventure.

Matlock's lively community is also home to excellent eateries and traditional pubs, ensuring that there is always something to do. The town's rich history is reflected in its architecture, stately homes, gardens and local museums, offering residents and visitors a glimpse into its fascinating past.





TRANSPORT LINKS





Car Links

Riber to Matlock:	
2.1 miles / 7 minutes	
Riber to Derby:	
21 miles / 37 minutes	
Riber Castle to Sheffield:	
23 miles - 1 hour	
Riber Castle to Manchester:	
53 miles - 1 hour 30 minutes	
Riber Castle to Nottingham:	
27 miles - 55 minutes	
Riber Castle to London:	
148 miles - 3 hours 20 minutes	
Matlock to M1 Junction 28:	
13 miles - 22 minutes	

Train Links

Matlock to Nottingham:	
1 hour direct	
Matlock to Sheffield:	
1 hour 27 minutes (1 change)	
Matlock to Derby:	
33 minutes direct	
Matlock to London:	
2 hours 24 minutes (1 change)	

Air Links

Manchester Airport:	
46 miles - 1 hour 30 minutes	
East Midlands Airport:	
34 miles - 49 minutes	

THE HISTORY OF RIBER CASTLE

Riber Castle, a castellated mansion built by the esteemed industrialist and philanthropist John Smedley between 1862 and 1868, stands as a beacon of history over Matlock.

Originally constructed as John Smedley's private mansion, the castle was built of gritstone from a local quarry which was pulled up the 200 metre high hill by a series of pulleys, showcasing a significant engineering feat of its time. The castle cost a reported £70,000 to complete, equivalent to £11m in today's money.

The castle was occupied by the Smedley Family until the death of John Smedley's wife in 1892. It then became an all boys boarding school. The arrival of WW2 saw it requisitioned by the Ministry of Defence for food storage. At this point the Castle's decline accelerated, until it stood as a towering ruin above Matlock with only the outer walls remaining.

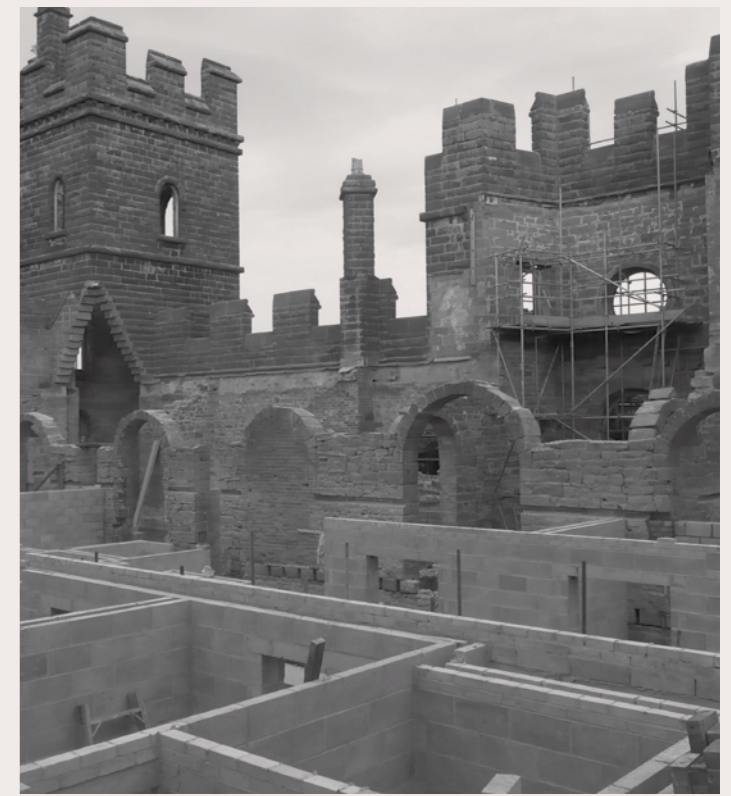


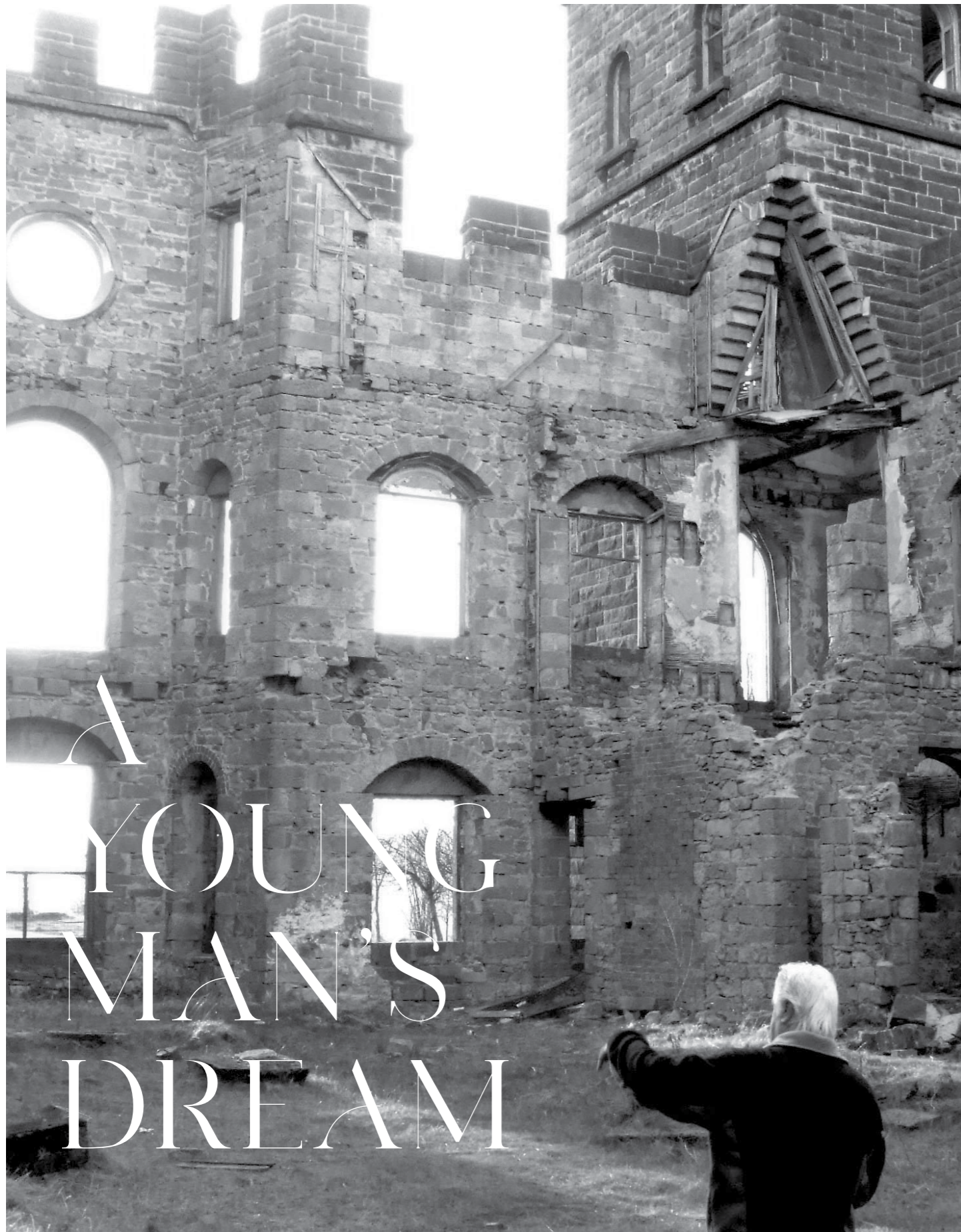


Riber Castle, during the Smedley ownership 1870s.

100 YEARS OF NEGLECT







Alan Wright was born eight miles from Riber Castle. As a young man he would look up at the castle and dream of one day owning it and restoring it to its former glory.

With a number of successful business ventures behind him, the closure of Riber Zoo in 1999 provided Alan with the means and opportunity to acquire the castle and fulfil his lifelong dream. Riber Castle was acquired in 2000, with work commencing in 2008.

Over the proceeding 16 years some of the finest craftsman and women in Derbyshire have toiled to restore the fabric of the castle. Whilst a lot of the character of the castle remained, a lot of its internals did not. No expense has been spared in either the design or construction and every effort has been made to replicate what John Smedley had imagined all those years ago.

24 years after the Castle was purchased Alan Wright's dream has finally been realised and Riber Castle is restored, boasting 26 luxurious apartments, offering some of the finest views in England.

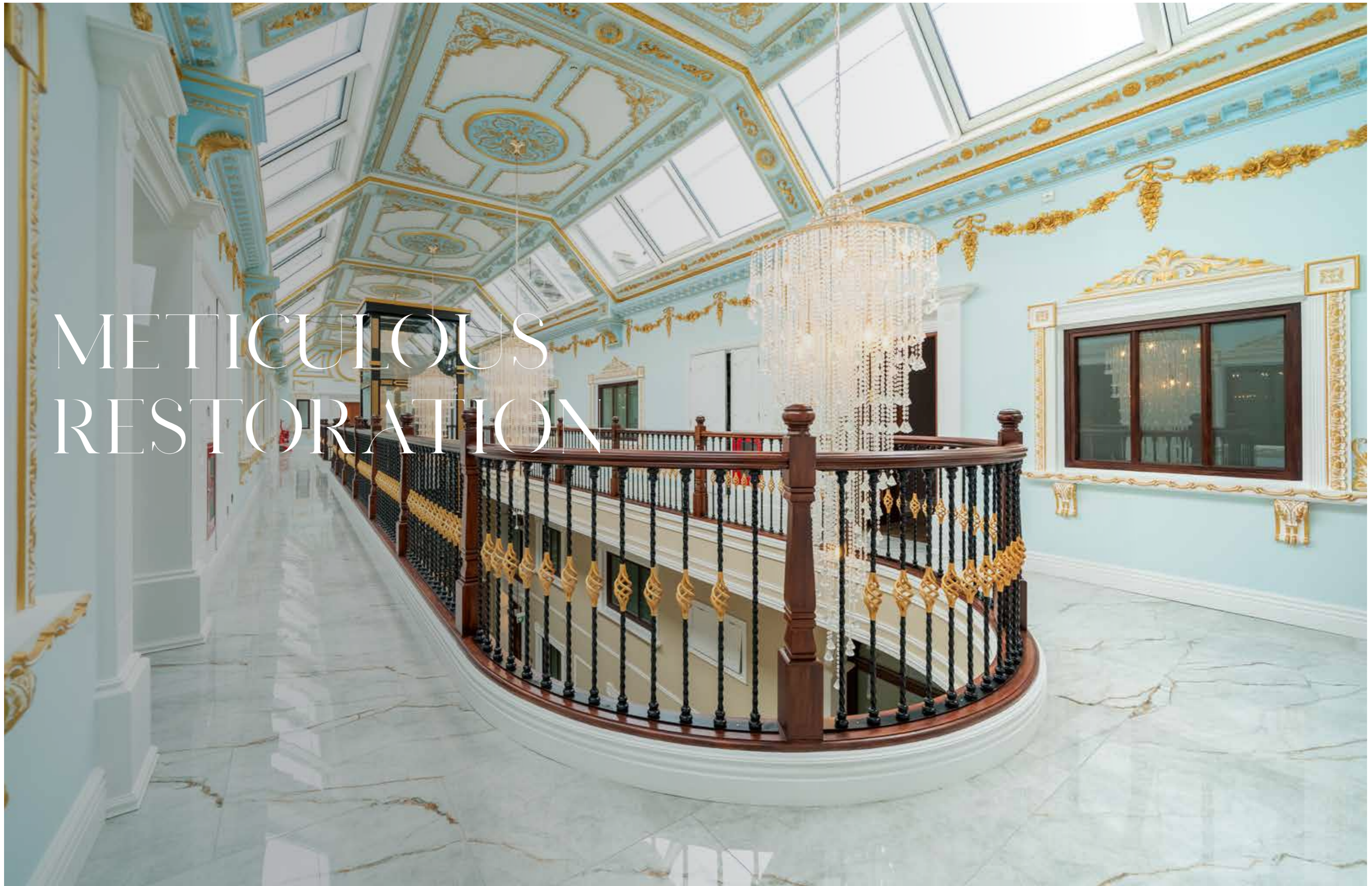
We invite you to become a part of Riber Castle's next chapter.





INTRODUCING
APARTMENTS 1-26
RIBER CASTLE

Riber Castle viewed from the formal walled gardens



METICULOUS RESTORATION

The Atrium viewed from the top floor



A UNIQUE OPPORTUNITY

Owning an apartment in Ribes Castle is a once in a generation opportunity.

This unique property offers the height of modern luxury, wonderful amenities and towering views across the beautiful peaks of Derbyshire.

Whether you are seeking a luxurious family residence, or a peaceful and opulent retreat, Ribes Castle offers endless possibilities.

OWN A PIECE OF BRITISH HISTORY



Perched majestically above Matlock in the heart of the Derbyshire Dales National Park, Riber Castle combines historical grandeur with modern luxury.

THE APARTMENTS 1-26

RIBER CASTLE

Riber Castle boasts 26 large and unique apartments, each with their own unique character, aspect, and stunning view. Prices from £500,000.



Schedule of Apartments

UNIT NO.	UNIT NAME	FEATURE	SQ FT	BEDS	BATHS	ENSUITES	PRIVATE ROOF TERRACE SQ FT	PRIVATE GARDEN SQ FT	VIEW
1	Apartment 1	G Floor	1946	3	1	1			Matlock
2	Apartment 2	G Floor	1736	2	1	2			Matlock
3	Apartment 3	G Floor	1946	3	1	2			Matlock
4	Apartment 4	G Floor - Garden Flat	1230	1	1	1		254	Garden
5	Apartment 5	G Floor - Garden Flat	1736	2	1	2		690	Garden
6	Apartment 6	G Floor - Garden Flat	1230	1	1	1		254	Garden
7	Apartment 7	Duplex	1904	3	2	1			Matlock
8	Apartment 8	Duplex	1384	2	1	1			Matlock
9	Apartment 9	Duplex	1900	3	2	1			Matlock
10	Apartment 10	Duplex	1572	3	1	1			Matlock
11	Apartment 11	Duplex	1454	3	1				End
12	Apartment 12	Duplex	1572	2	1	1			Garden
13	Apartment 13	Duplex	1900	3	2	1			Garden
14	Apartment 14	Duplex	1384	2	1	1			Garden
15	Apartment 15	Duplex	1904	3	2	1			Garden
16	Apartment 16	Duplex	1572	2	1	1			Garden
17	Apartment 17	Duplex	1454	3	1				End
18	Apartment 18	Duplex	1572	2	1	1			Matlock
19	Apartment 19	TOWER Duplex - Roof Terrace	1618	2	1	1	506		Matlock
20	Apartment 20	Roof Terrace Duplex	1499	2	1	1	129		Matlock
21	Apartment 21	TOWER Duplex - Roof Terrace	1618	2	1	1	495		Matlock
22	Apartment 22	Roof Terrace Duplex	1034	2	1	1			End
23	Apartment 23	TOWER Duplex- Roof Terrace	1618	2	1	1	473		Garden
24	Apartment 24	Roof Terrace Duplex	1499	2	1	1	129		Garden
25	Apartment 25	TOWER Duplex - Roof Terrace	1618	2	1	1	495		Garden
26	Apartment 26	Roof Terrace Duplex	1034	2	1	1			End

GROUND FLOOR

MATLOCK VIEW



GARDENS

GARDENS

FIRST FLOOR

MATLOCK VIEW



GARDENS

GARDENS

FIRST FLOOR MEZZANINE

MATLOCK VIEW

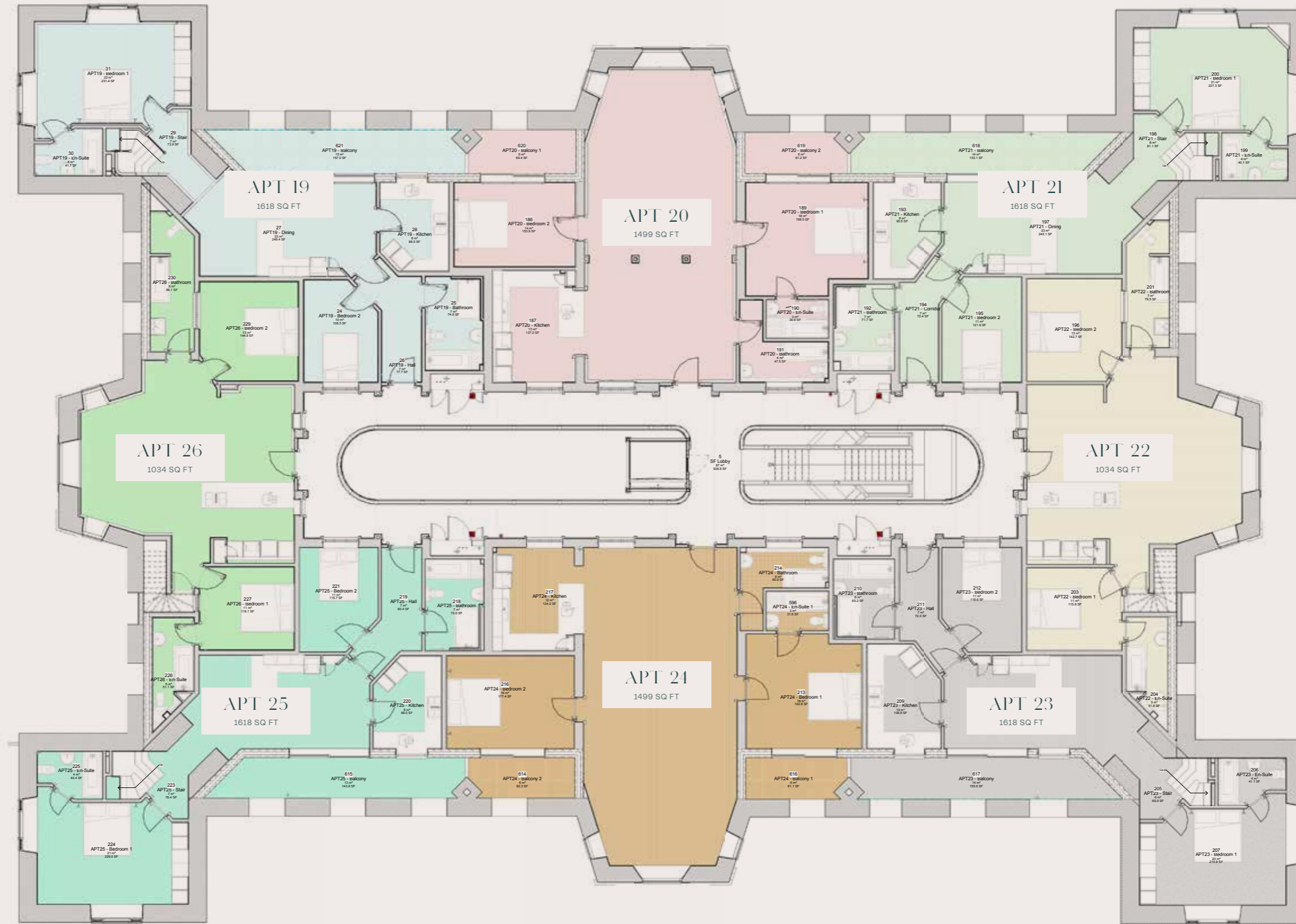


GARDENS

GARDENS

SECOND FLOOR

MATLOCK VIEW

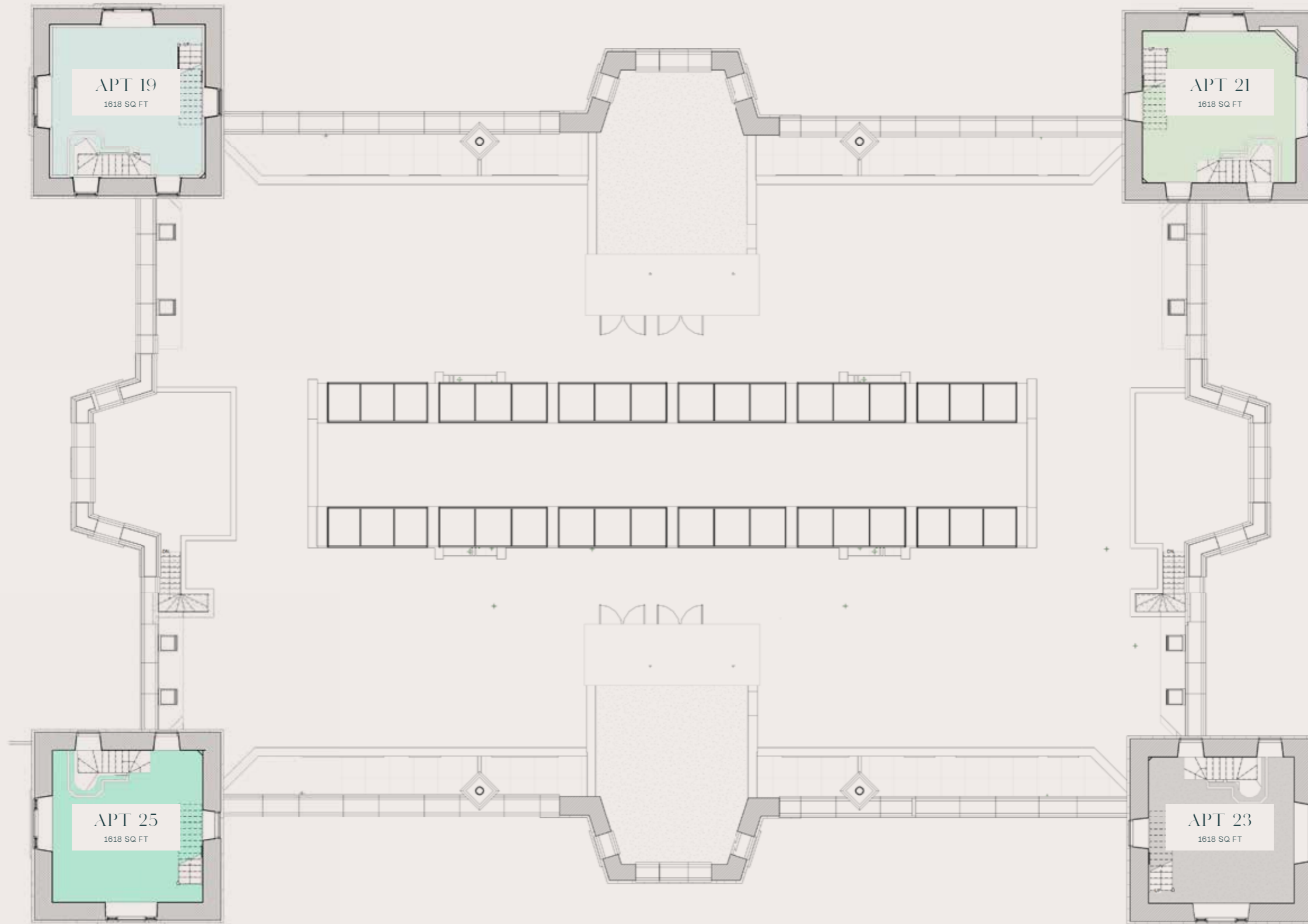


GARDENS

GARDENS

SECOND FLOOR MEZZANINE

MATLOCK VIEW



GARDENS

GARDENS

FEATURES AND AMENITIES

PRIVACY

Riber Castle Estate is a gated community with electric gates and CCTV. The community offers complete privacy and security.

VICTORIAN MODERNITY

Experience the perfect blend of historic elegance and modern luxury with bespoke plaster coving and skilfully crafted panelling throughout the building.

WARM & COSY

Enjoy double glazing, thick internal insulation, underfloor heating, paired with solid wood floors and luxurious carpets, ensuring ultimate comfort and warmth in winter, and coolness in summer.

THE FINEST VIEWS IN ENGLAND

Large windows frame breathtaking vistas of the stunning Derbyshire landscape, bringing natural beauty right into your living space. Apartments view 1km vertically down to Matlock, and soar in the distance over to Mam Tor, 30km NNW and Kinder Scout, the highest peak in the Peak District National Park. They have to be seen to be believed.

PEACE OF MIND

In addition to the security features the Castle will benefit from a Building Manager to handle all maintenance related issues, and to oversee the grounds and cleaning within the Castle.

'ALEXA - TURN ON THE LIGHTS'

Each apartment benefits from its own tablet and Alexa-enabled Building Management System. From your tablet you can control the access gates, castle entry, lighting, heating and even the curtains and your own front door. Alexa can be called upon to turn on the Lights, close the curtains and open your front door. For those preferring a simpler approach, heating and hot water can be controlled with a thermostat, and light switches and locks that are provided.

LIFT ACCESS AND LATERAL LIVING

The castle features a glass lift, and over half of the apartments are fully accessible. Automatic opening front doors and thoughtfully designed ramps ensure that those with limited mobility can live at the castle without any limitations.

LUXURY SPA

Indulge in our luxury spa, featuring an 8-person thermal spa, separate sauna, and steam room, alongside private shower and changing areas for ultimate relaxation.

STATE-OF- THE-ART GYM

Stay fit and active in our fully equipped gym, boasting the latest cardiovascular and weight training equipment, with views over the formal gardens through large floor to ceiling windows. Whether you're into intense workouts or just starting your fitness journey, you'll find everything you need to stay motivated and in top shape.

ORANGERY

The castle boasts a 200m² orangery with floor to ceiling glazing and vaulted lanterns, with stunning views over the formal gardens which provides luxurious and versatile space for residents.

Enjoy a spacious reading room and a dedicated office area for remote work. Additionally, the orangery features a stylish bar area, perfect for socialising, and a multi-use space that residents can utilise for entertaining guests.

LISTED COURTYARD GARDEN

Discover serenity in Riber Castle's exquisite gardens, offering residents and their guests a peaceful backdrop for leisurely strolls amidst mature trees, bushes and lawned areas.

Perfect for evening drinks, this picturesque garden, previously designed by John Smedley, provides a peaceful escape from the hustle and bustle, allowing you to unwind and connect with nature in privacy.

BATTERY CHARGING AND AMPLE CAR PARKING

8 x car charging units and 2 spaces per flat, as well as ample overflow parking for residents' guests is provided for.



LUXURIOUS LIFESTYLE



LATERAL LIVING



Each bedroom serves as a sanctuary of tranquility, meticulously designed to provide a restful retreat.

You'll find luxurious fixtures and fittings that exude elegance and comfort, making every moment spent in these rooms a pleasure. The en-suite bathrooms are equipped with top-of-the-line fixtures and finishes, offering a spa-like experience right at home.

Large windows frame breathtaking views of the surrounding countryside, allowing you to wake up to the beauty of nature each day. Every detail has been carefully curated to create an atmosphere of serene opulence, ensuring that your bedroom is not just a place to sleep, but a personal haven.

OPULENT BEDROOMS



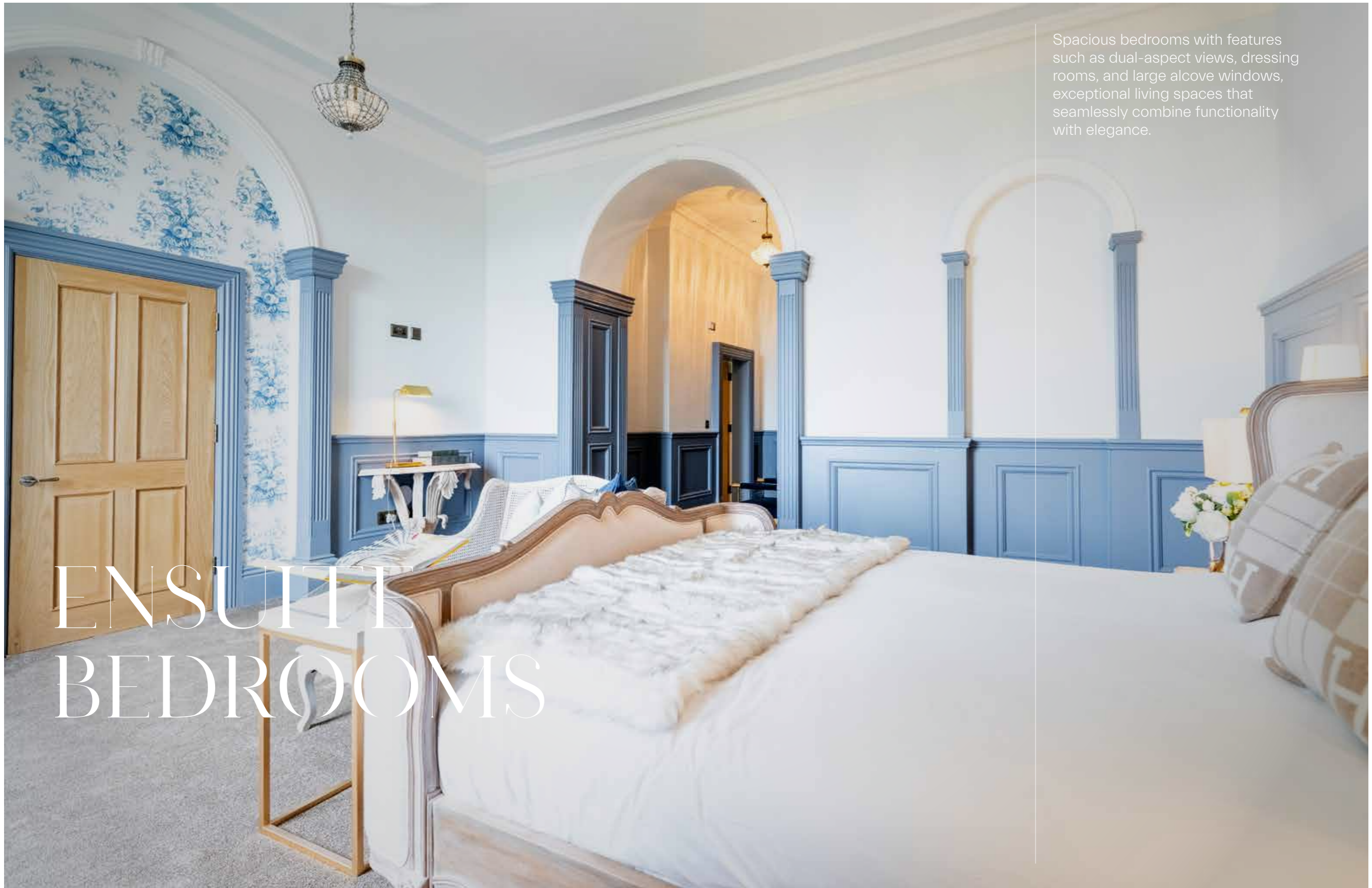
HIGH SPECIFICATION KITCHENS

Bespoke designs with fitted joinery, integrated top specification dishwashers, washing machines, fridges, freezers & Quooker instant hot water taps.

LUXURY BATHROOMS

Victorian style modern bathrooms with opulent fittings and finishes including ceramic tiling and solid wood floors, complete with underfloor heating.





Spacious bedrooms with features such as dual-aspect views, dressing rooms, and large alcove windows, exceptional living spaces that seamlessly combine functionality with elegance.

ENSUITE BEDROOMS

PEACE OF MIND

Every apartment has a full Building Management system to monitor and control energy use, advanced security features, including secure entry systems, and gated access.

OPULENT & COSY

Enjoy underfloor heating throughout the apartments, complemented by solid wood floors and luxurious carpets for ultimate comfort.





METICULOUS DETAILING

Bespoke plaster coving and period panelling add a touch of historic elegance, seamlessly blending with the modern luxury of your home. Historical charm combined with modern finishes.

OPEN PLAN LAYOUTS

Expansive living spaces and large hallways with towering ceilings and abundant natural light from large windows.



PRIVACY & SECURITY



Riber Castle is a gated 18-acre community. Once you drive through the Main Gate, your space and time is truly your own.

CCTV, video entry systems and a building manager will ensure that any unwanted visitors will not become your concern.

No Airbnb or short term lettings (below 6 months) are permitted, meaning you won't have to share communal spaces and grounds with anyone other than residents.





Each flat is sold with a 10 year ACHI insurance backed structural warranty and a two year defects period from the developer. This means you are covered for all of the serious items by insurance, and any minor issues will be corrected in the first two years at the developers expense.



10 YEAR INSURANCE BACKED GUARANTEE



MANAGEMENT AND SERVICE CHARGE

Hadrian Property Management, one of the UK's best known and most respected property managers will be appointed to run the Estate Management Company and the Block Management Company.

They will be ultimately responsible for ensuring high levels of customer service are provided and the on-site gardeners, cleaners and porter are meeting your high expectations. Each flat owner will carry a vote, and has the option of being involved in the running of the Service Charge Company should they choose. Alternatively they can leave it to Hadrian who will do the job to an exacting standard.

The running of the estate is split into two companies:

Service Charge

Maintenance of the Castle itself of which the 26 Apartments form its members.

- Service Charge Estimate
£290 per month

Estate Charge

The roads, gardens, grounds, gym and spa.

- Estate Charge Estimate
£190 per month



EXCLUSIVE AMENITIES

The main entrance into the Orangery. An incredible entrance and a wonderful shared space to relax and unwind, or to work in the office area.



STATE OF THE ART GYM



Residents enjoy access to an array of exceptional amenities: Stay fit and active in our fully equipped, state-of-the-art gym, featuring the latest in cardiovascular and weight training equipment.

Designed to cater to all fitness levels, our gym provides a dynamic environment for residents to achieve their health and wellness goals. Whether you're into intense workouts or just starting your fitness journey, you'll find everything you need to stay motivated and in top shape.





LUXURY SPA



Indulge in ultimate relaxation with our state-of-the-art luxury spa, featuring an 8-person thermal spa for soothing hydrotherapy, a separate sauna to detoxify and rejuvenate, and a steam room to melt away stress.

This exquisite facility offers a sanctuary of wellness, exclusively available to residents, ensuring a tranquil escape right at your doorstep.



LIBRARY

At the opposite end to the Orangery lies the Library. Exposed stone walls, and 6m ceiling heights towering up to a vaulted full length and width lantern provide for a wonderful escape from your apartment. Read a book in peace, or meet other residents in an opulent space to unwind.



ORANGERY

The Orangery forms the stunning main entrance into the Castle. It offers a luxurious and versatile space for residents to work, rest or play. Enjoy a spacious reading room and a dedicated office area for those who wish to work from home in a serene environment.

Additionally, the Orangery features a stylish bar area, perfect for socialising with other residents or guests.



LISTED COURTYARD GARDEN



Discover serenity in Riber Castle's exquisite gardens, offering residents and their guests a peaceful backdrop for leisurely strolls amidst mature trees, bushes and lawned areas.

Perfect for leisurely strolls or evening drinks, this picturesque garden previously designed by John Smedley provides a peaceful escape from the hustle and bustle, allowing you to unwind and connect with nature. The garden's historic charm and lush surroundings make it an ideal spot for relaxation and social gatherings.





SURROUNDED BY NATURE



The nearby Peak District National Park provides endless opportunities to open countryside, scenic walks, mountain biking, historic towns, and a variety of lively pubs and restaurants.



“
RIBER CASTLE IS
WITHOUT QUESTION
THE MOST IMPRESSIVE
CONVERSION OF A
LISTED BUILDING
I’VE SEEN IN OVER
20 YEARS.
”

JAMIE ADAM
DIRECTOR - SAVILLS



For further information or to arrange an appointment to view the Riber Castle apartments please contact the joint agents:

Savills New Homes, North
Belvedere
12 Booth Street
Manchester
M2 4AW

Email: northwest.newhomes@savills.com
Telephone: 0161 244 7705



Matlock Office
2 Dale Road
Matlock
DE4 3LT

Email: info@dalesandpeaks.co.uk
Telephone: 01629 700246



IMPORTANT NOTICE

Savills, their clients and any joint agents give notice that:

1. They are not authorised to make or give any representations or warranties in relation to the property either here or elsewhere, either on their own behalf or on behalf of their client or otherwise. They assume no responsibility for any statement that may be made in these particulars. These particulars do not form part of any offer or contract and must not be relied upon as statements or representations of fact.
2. Any areas, measurements or distances are approximate. The text, images and plans are for guidance only and are not necessarily comprehensive. It should not be assumed that the property has all necessary planning, building regulation or other consents and Savills have not tested any services, equipment or facilities. Purchasers must satisfy themselves by inspection or otherwise.
3. These particulars were prepared from preliminary plans and specifications before the completion of the properties. These particulars, together with any images that they contain, are intended only as a guide. They may have been changed during construction and final finishes could vary. Prospective purchasers should not rely on this information but must get their solicitor to check the plans and specification attached to their contract.

