



## Beech View Thatchers Lane

Tansley, Matlock, DE4 5FD

Guide Price £300,000





## Beech View Thatchers Lane

Tansley, Matlock, DE4 5FD

£300,000 - £315,000 (Guide price) An attractive and well presented 3 bedroom, stone built cottage retaining many of the properties original features throughout, situated in the picturesque Derbyshire village of Tansley. Offering 1001 sqft of accommodation over two storeys and benefitting from a low maintenance front garden, single garage and off street parking.

The ground floor comprises; Living room with period features such as beams, stone fireplace and log burning stove and open plan dining kitchen with handmade bespoke units, a traditional Belfast style sink and open fireplace.

The first floor comprises; Three generously proportioned bedrooms and main bathroom.

Tansley boasts a thriving community, good road communications, a well respected primary school and two public houses.

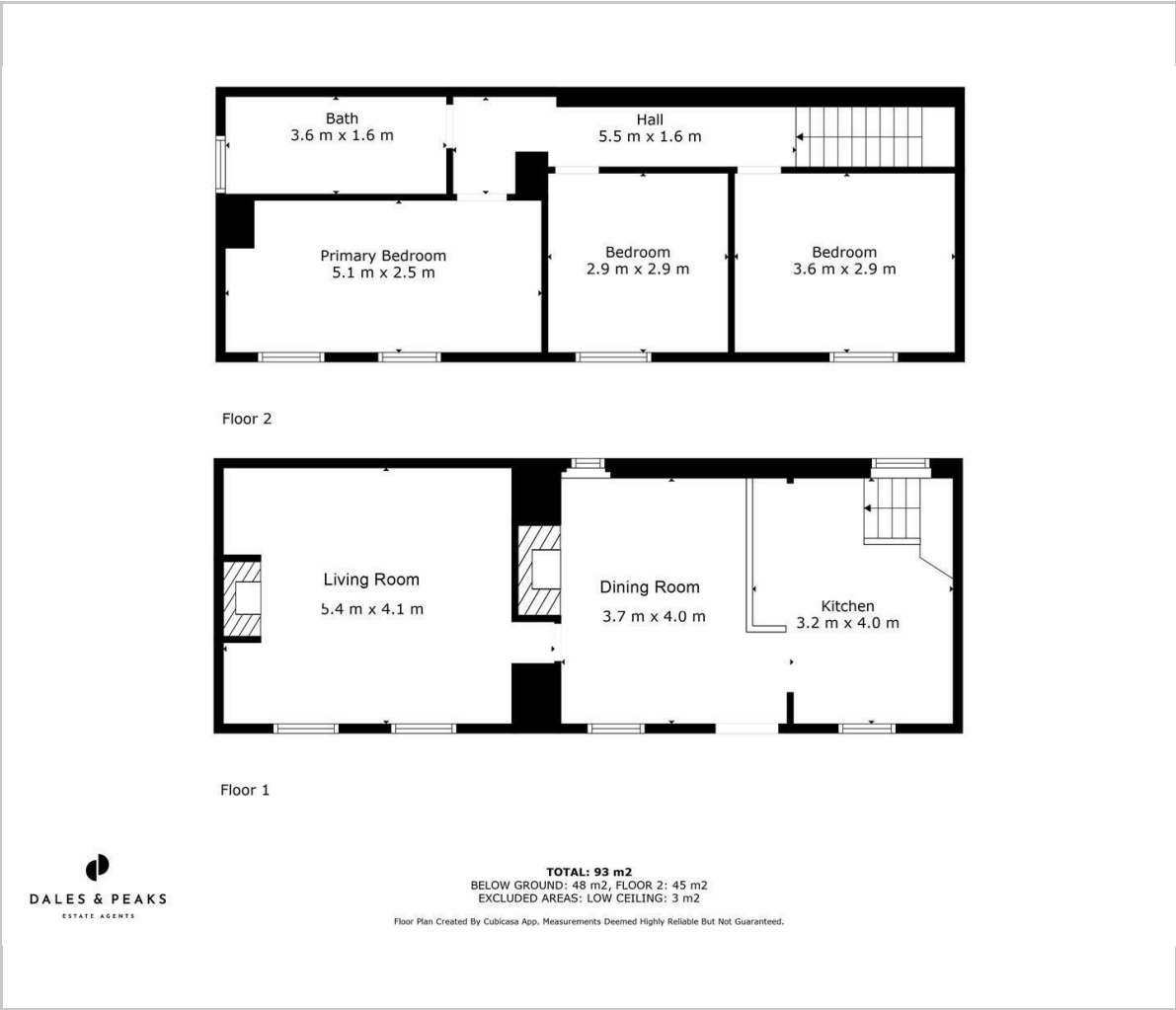
**Dales and Peaks ForwardMove**  
- Please read







Floor Plan



Viewing

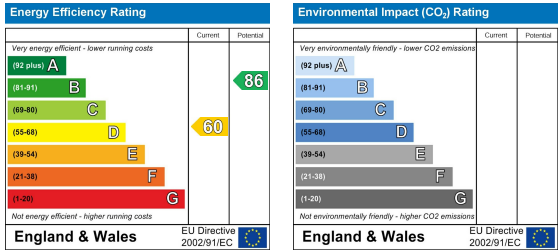
Please contact our Matlock Office on 01629 700246 if you wish to arrange a viewing appointment for this property or require further information.

These particulars, whilst believed to be accurate are set out as a general outline only for guidance and do not constitute any part of an offer or contract. Intending purchasers should not rely on them as statements of representation of fact, but must satisfy themselves by inspection or otherwise as to their accuracy. No person in this firms employment has the authority to make or give any representation or warranty in respect of the property.

Area Map



Energy Efficiency Graph



2 Dale Road, Matlock, Derbyshire, DE4 3LT  
T: 01629 700246



E: info@dalesandpeaks.co.uk  
www.dalesandpeaks.co.uk