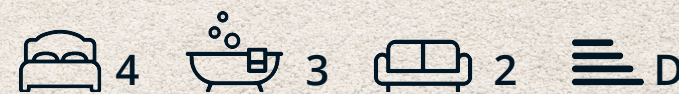




Curlew Barn Aldwark
Grange Mill, Matlock, DE4 4HX
£650,000



Curlew Barn Aldwarck

Grange Mill, Matlock, DE4 4HX

Situated in the idyllic Peak District Hamlet of Aldwarck, Curlew Barn boasts incredible views over the neighbouring fields and offers off street parking for multiple vehicles, double garage and beautifully presented gardens.

The ground floor comprises: Dual aspect living room with log burning stove, formal dining room with tiled flooring and glass door onto the rear garden, dining kitchen with quartz worktops, freestanding electric range cooker and integrated appliances, leading through to the utility area and downstairs WC.

The first floor; Two double bedrooms with ensuite shower rooms, a further double bedroom, single bedroom and bathroom.

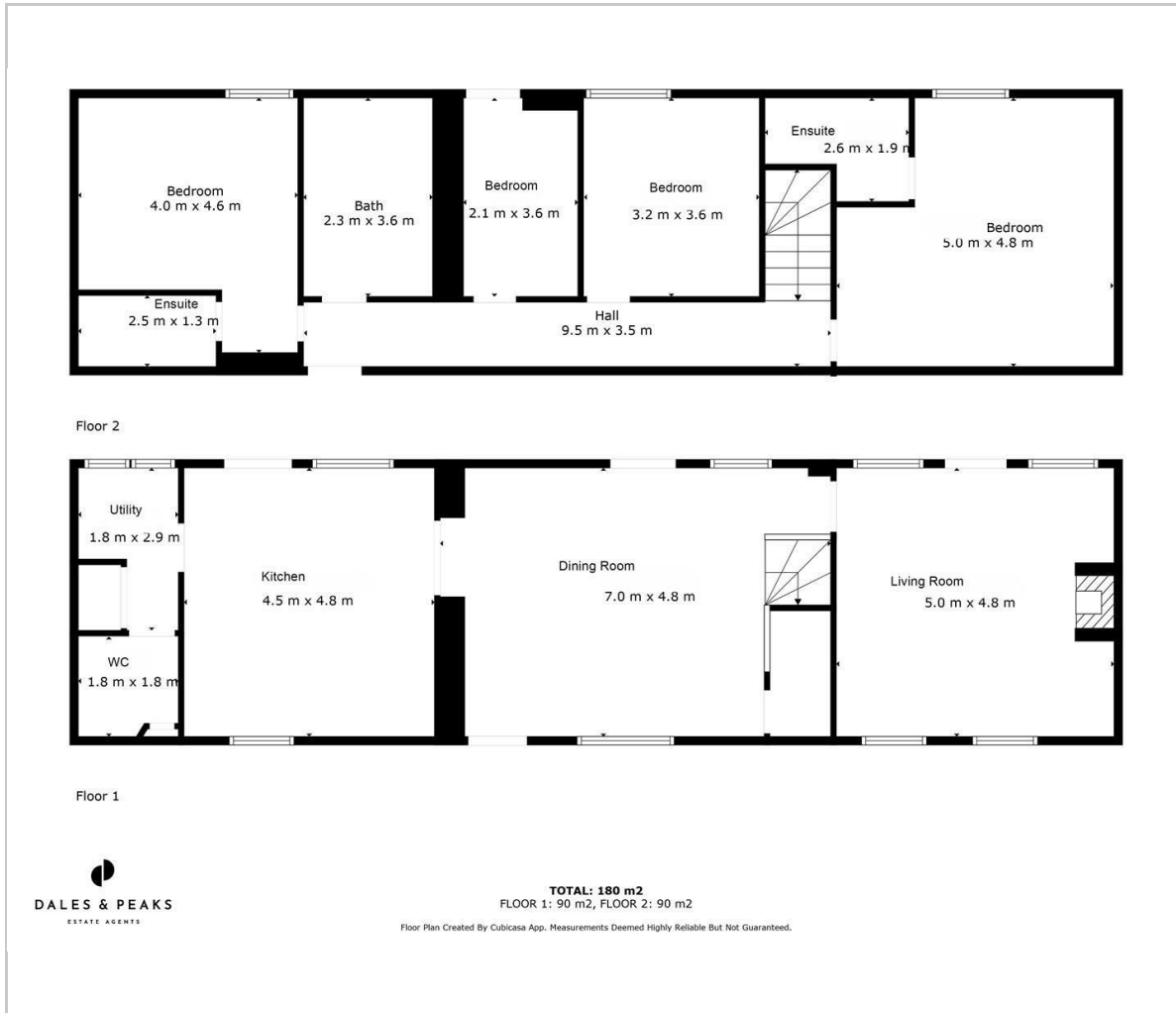
Exterior; Beautifully presented gardens and small paddock extending to approximately 0.6 acres.

Dales and Peaks ForwardMove
- Please read





Floor Plan

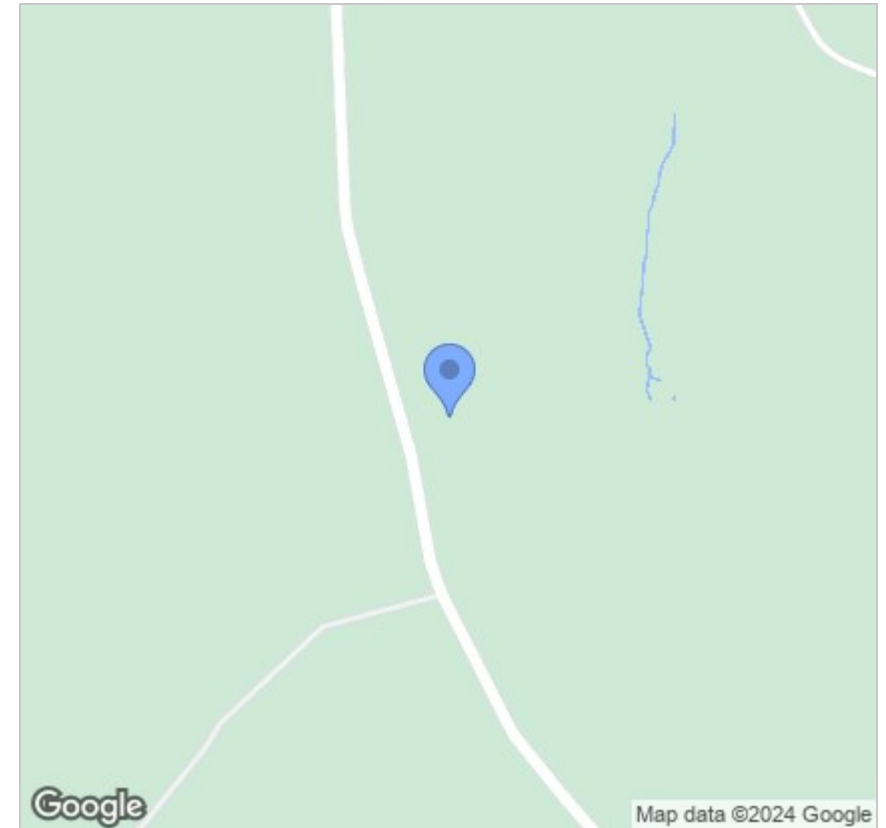


Viewing

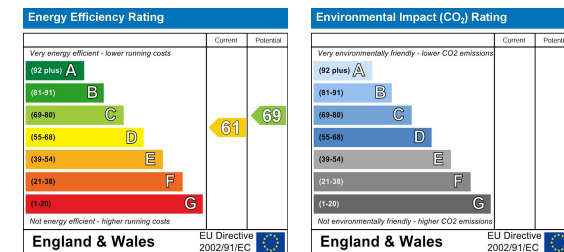
Please contact our Matlock Office on 01629 700246 if you wish to arrange a viewing appointment for this property or require further information.

These particulars, whilst believed to be accurate are set out as a general outline only for guidance and do not constitute any part of an offer or contract. Intending purchasers should not rely on them as statements of representation of fact, but must satisfy themselves by inspection or otherwise as to their accuracy. No person in this firm's employment has the authority to make or give any representation or warranty in respect of the property.

Area Map



Energy Efficiency Graph



2 Dale Road, Matlock, Derbyshire, DE4 3LT
 T: 01629 700246



E: info@dalesandpeaks.co.uk
 www.dalesandpeaks.co.uk