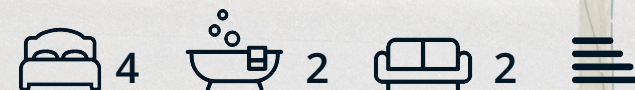




West View 51 and 51A Greenaway Lane

Hackney, Matlock, DE4 2QB

£575,000



West View 51 and 51A

Hackney, Matlock, DE4 2QB

An attractive and substantial 4 bedroom detached property, presenting a fantastic opportunity to modernise internally whilst occupying a generous plot with panoramic views of the surrounding countryside. Offering 1872 sqft of accommodation over two storeys and benefitting off street parking, garage and beautifully presented gardens.

The property is currently used as 2 separate properties, one as a main residence and the other as holiday let accommodation.

The ground floor comprises; Kitchen with breakfast bar and access onto the side of the property, open plan living space with log burning stove and a second living room and dining kitchen.

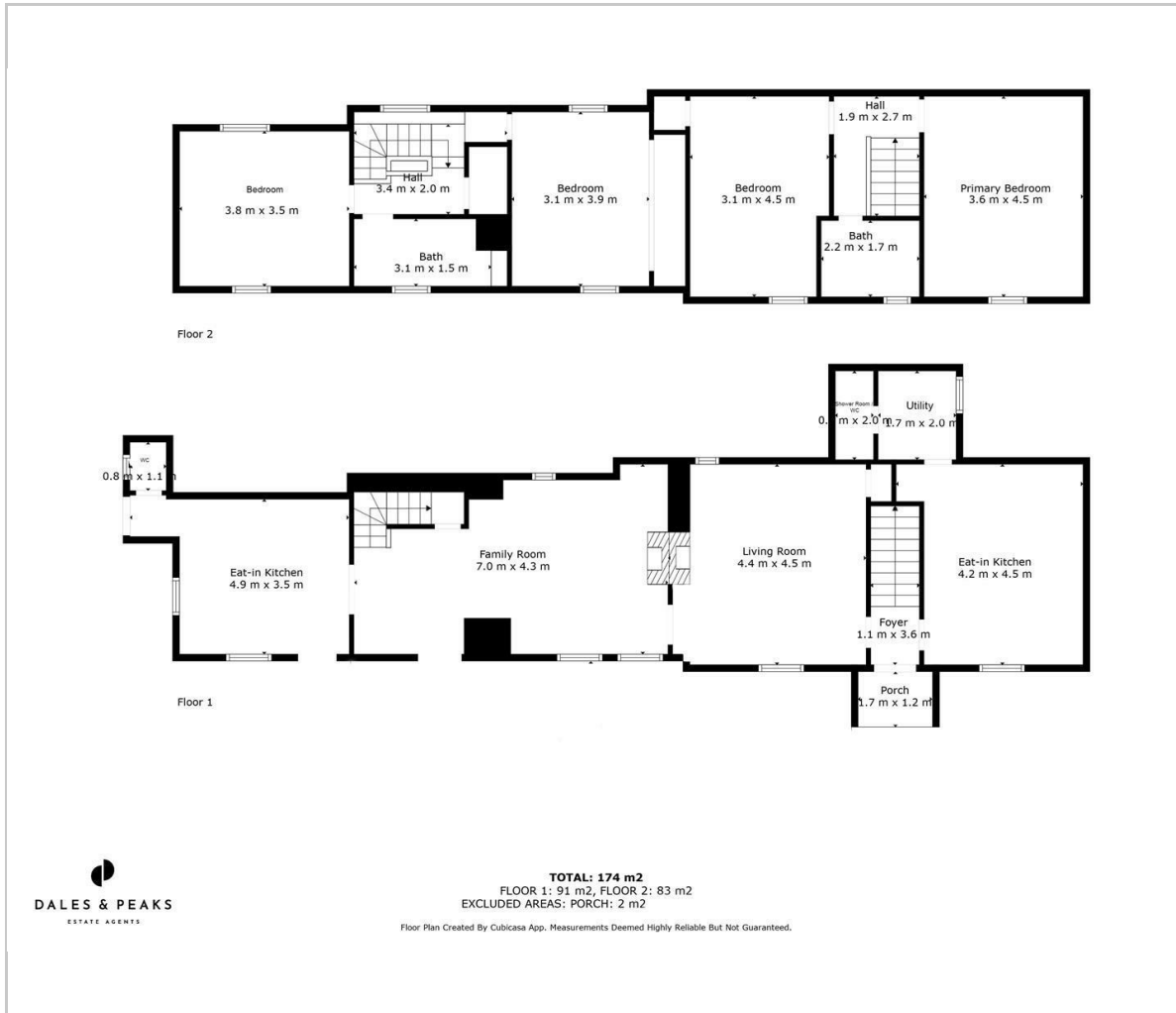
The first floor comprises; 4 double bedrooms and 2 bathrooms.

Dales and Peaks ForwardMove
- Please read

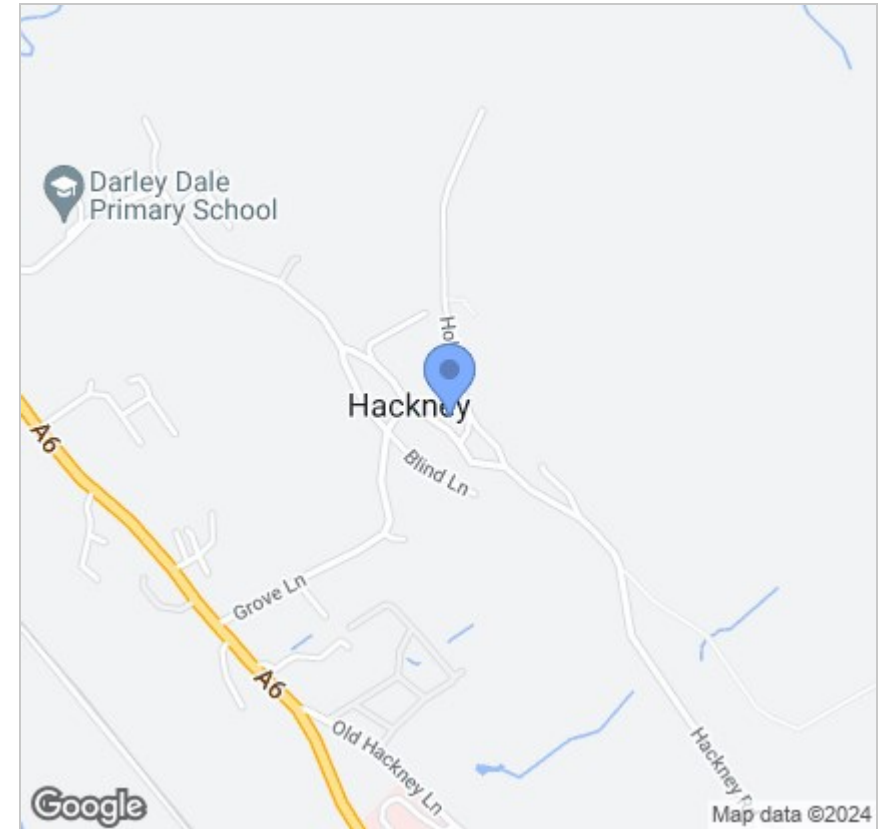




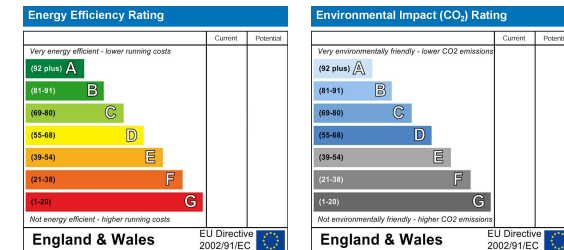
Floor Plan



Area Map



Energy Efficiency Graph



Viewing

Please contact our Matlock Office on 01629 700246 if you wish to arrange a viewing appointment for this property or require further information.

These particulars, whilst believed to be accurate are set out as a general outline only for guidance and do not constitute any part of an offer or contract. Intending purchasers should not rely on them as statements of representation of fact, but must satisfy themselves by inspection or otherwise as to their accuracy. No person in this firm's employment has the authority to make or give any representation or warranty in respect of the property.



2 Dale Road, Matlock, Derbyshire, DE4 3LT
 T: 01629 700246

E: info@dalesandpeaks.co.uk
 www.dalesandpeaks.co.uk