



23 Cromford Road
Crich, Matlock, DE4 5DJ

£1,000 PCM



23 Cromford Road

Crich, Matlock, DE4 5DJ

A three bedroom family home in the quiet village of Crich.

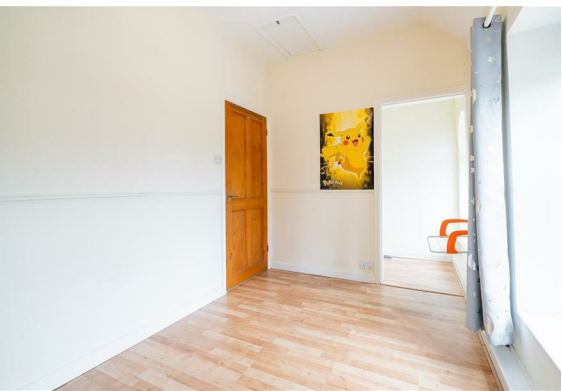
The property comprises of two reception rooms, both with log burning stoves, neutral decoration and exposed beams. Modern fitted kitchen with white wall and base units, breakfast bar and electric cooker. Three bedrooms upstairs and a family bathroom with three piece suite as well as a separate shower room. To the rear of the property hosts a low maintenance garden with patio area.

For fee information please copy and paste the link below for our tenant brochure

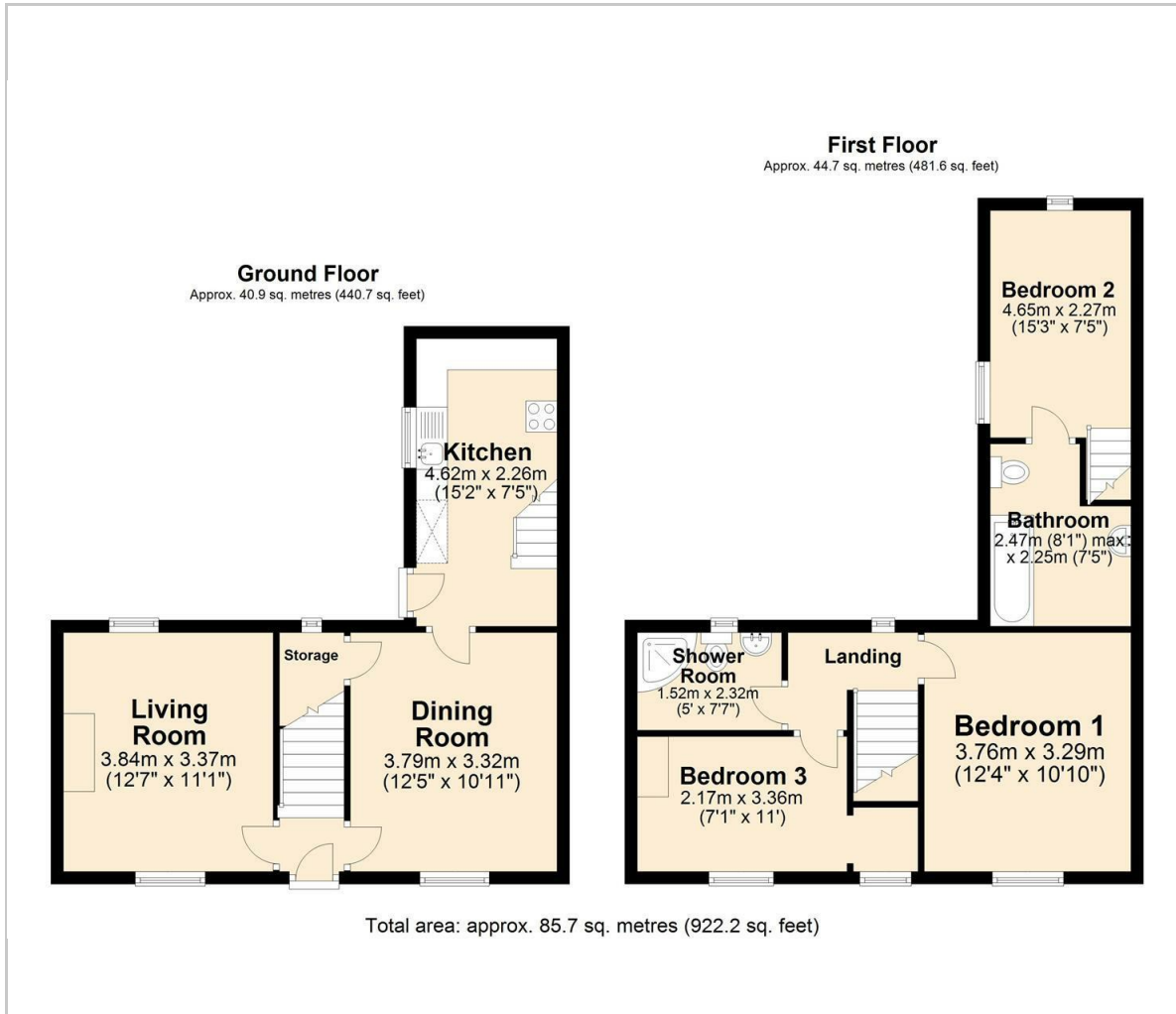
https://ggfx-dalesandpeaks.s3.eu-west-2.amazonaws.com/i.prod/Tenants_broc

- * We are a member of the Propertymark Client Money Protection Scheme - propertymark.co.uk
- * We are a member of The Property Ombudsman Scheme - tpos.co.uk
- * We place all our deposits in the Deposit Protection Scheme DPS - depositprotection.com





Floor Plan



Viewing

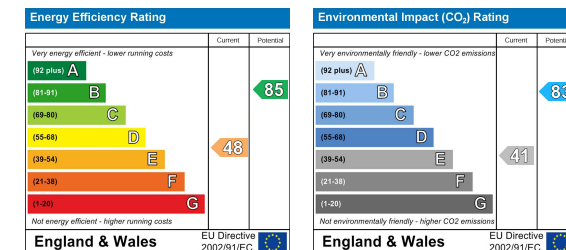
Please contact our Matlock Office on 01629 700246 if you wish to arrange a viewing appointment for this property or require further information.

These particulars, whilst believed to be accurate are set out as a general outline only for guidance and do not constitute any part of an offer or contract. Intending purchasers should not rely on them as statements of representation of fact, but must satisfy themselves by inspection or otherwise as to their accuracy. No person in this firm's employment has the authority to make or give any representation or warranty in respect of the property.

Area Map



Energy Efficiency Graph



2 Dale Road, Matlock, Derbyshire, DE4 3LT
T: 01629 700246



E: info@dalesandpeaks.co.uk
www.dalesandpeaks.co.uk