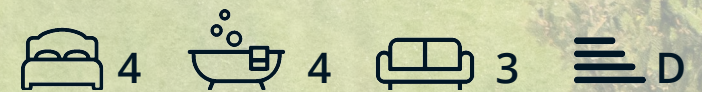




Painters Nook Hallmoor Road

Two Dales, Matlock, DE4 2QQ

£1,200,000



Painters Nook Hallmoor

Two Dales, Matlock, DE4 2QQ

Grand, elegant and in the most tranquil of locations, Painters Nook is an imposing 4 bedroom detached residence situated on Hallmoor Road. Enjoying a plot measuring approximately 1.1 acres with beautifully presented gardens and panoramic views of the surrounding countryside and benefitting from ample off street parking for multiple vehicles and an integral double garage with a storage room to the rear.

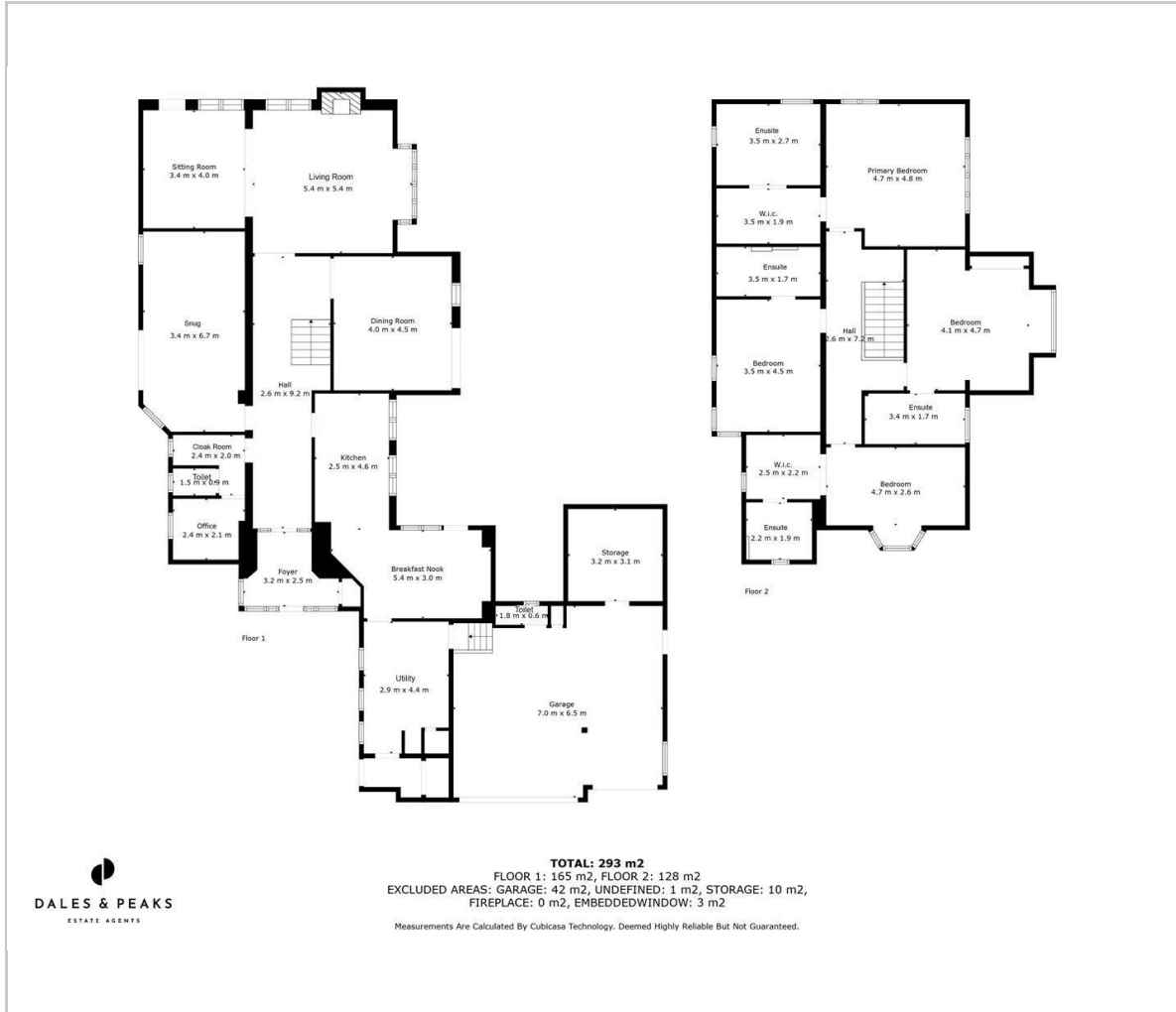
The ground floor comprises; Entrance porch and inner central hallway, modern kitchen with integral appliances and breakfast nook with access onto the front patio, formal dining room with doors onto the front patio, dual aspect living room with gas fireplace and side door onto the patio, rear aspect snug with French doors onto the rear patio, home office, WC and utility room.

The first floor comprises; Master bedroom with walk in wardrobe/dressing room and ensuite bath and shower room, 2 further front aspect double bedrooms with ensuite shower rooms and rear aspect double bedroom with ensuite bath and shower room.





Floor Plan



Viewing

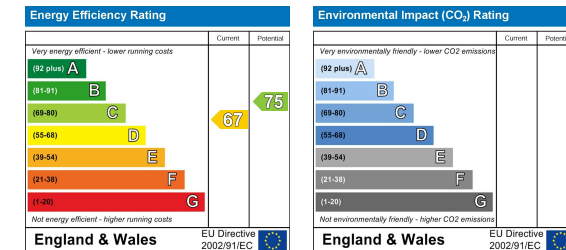
Please contact our Matlock Office on 01629 700246 if you wish to arrange a viewing appointment for this property or require further information.

These particulars, whilst believed to be accurate are set out as a general outline only for guidance and do not constitute any part of an offer or contract. Intending purchasers should not rely on them as statements of representation of fact, but must satisfy themselves by inspection or otherwise as to their accuracy. No person in this firm's employment has the authority to make or give any representation or warranty in respect of the property.

Area Map



Energy Efficiency Graph



2 Dale Road, Matlock, Derbyshire, DE4 3LT
 T: 01629 700246



E: info@dalesandpeaks.co.uk
 www.dalesandpeaks.co.uk