



DALES & PEAKS



11 Calton View
Bakewell, DE45 1FN

£300,000



1



1



D

11 Calton View

, Bakewell, DE45 1FN

£300,000 - £325,000 (Guide price) A deceptively spacious two bedroom mid terrace cottage, situated in the historic town of Bakewell. Retaining original features, the property has been recently renovated to a high standard and benefits from beautifully presented front and rear gardens and an outbuilding to the rear.

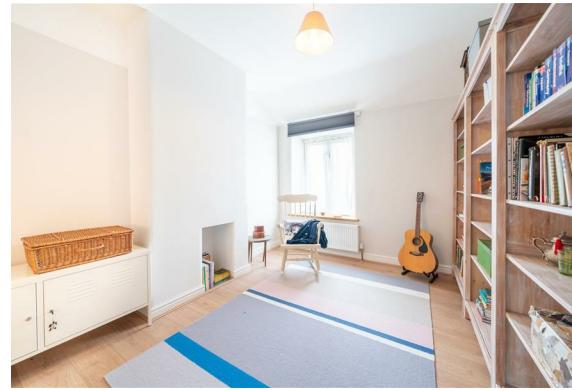
The ground floor comprises; Entrance hallway, front aspect living room with log burning stove and stone hearth, open plan dining kitchen with feature fireplace and access to the rear porch and garden.

The first floor comprises; Two well proportioned double bedrooms and bathroom with bath and separate shower.



Dales and Peaks ForwardMove - Please read





Floor Plan

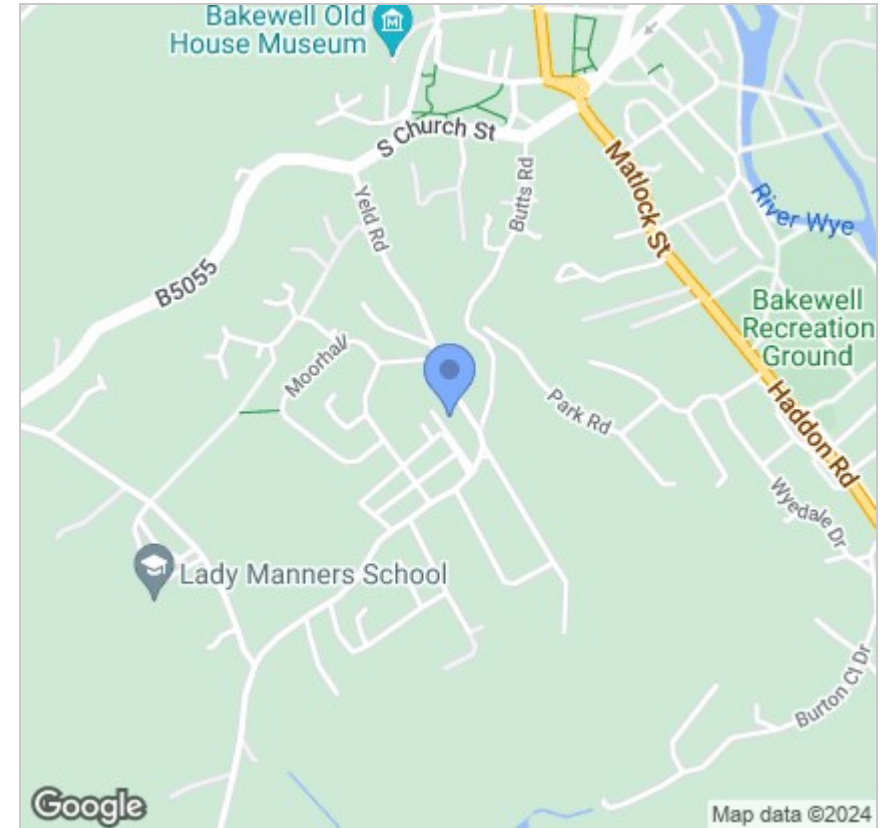


Viewing

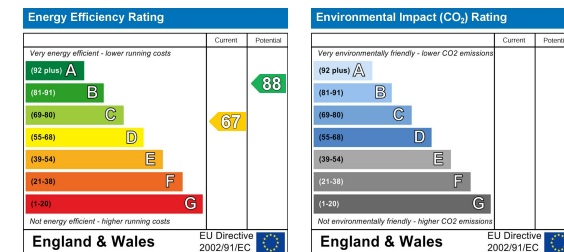
Please contact our Matlock Office on 01629 700246 if you wish to arrange a viewing appointment for this property or require further information.

These particulars, whilst believed to be accurate are set out as a general outline only for guidance and do not constitute any part of an offer or contract. Intending purchasers should not rely on them as statements of representation of fact, but must satisfy themselves by inspection or otherwise as to their accuracy. No person in this firm's employment has the authority to make or give any representation or warranty in respect of the property.

Area Map



Energy Efficiency Graph



2 Dale Road, Matlock, Derbyshire, DE4 3LT
 T: 01629 700246



E: info@dalesandpeaks.co.uk
 www.dalesandpeaks.co.uk