



DALES & PEAKS



66 Eversleigh Rise

Darley Bridge, Matlock, DE4 2JW

£350,000



66 Eversleigh Rise

Darley Bridge, Matlock, DE4 2JW

A beautifully presented 3 bedroom semi detached property, situated in the sought after village of Darley Bridge. Offering 1170 sqft of well proportioned and presented living accommodation and backing onto neighbouring fields, the property benefits from off street parking, a low maintenance garden to the rear, and stunning countryside views.

The ground floor comprises; Entrance hallway, front aspect family living room with log burning stove, modern open plan dining kitchen, utility room and downstairs WC, conservatory with patio doors onto the rear garden.

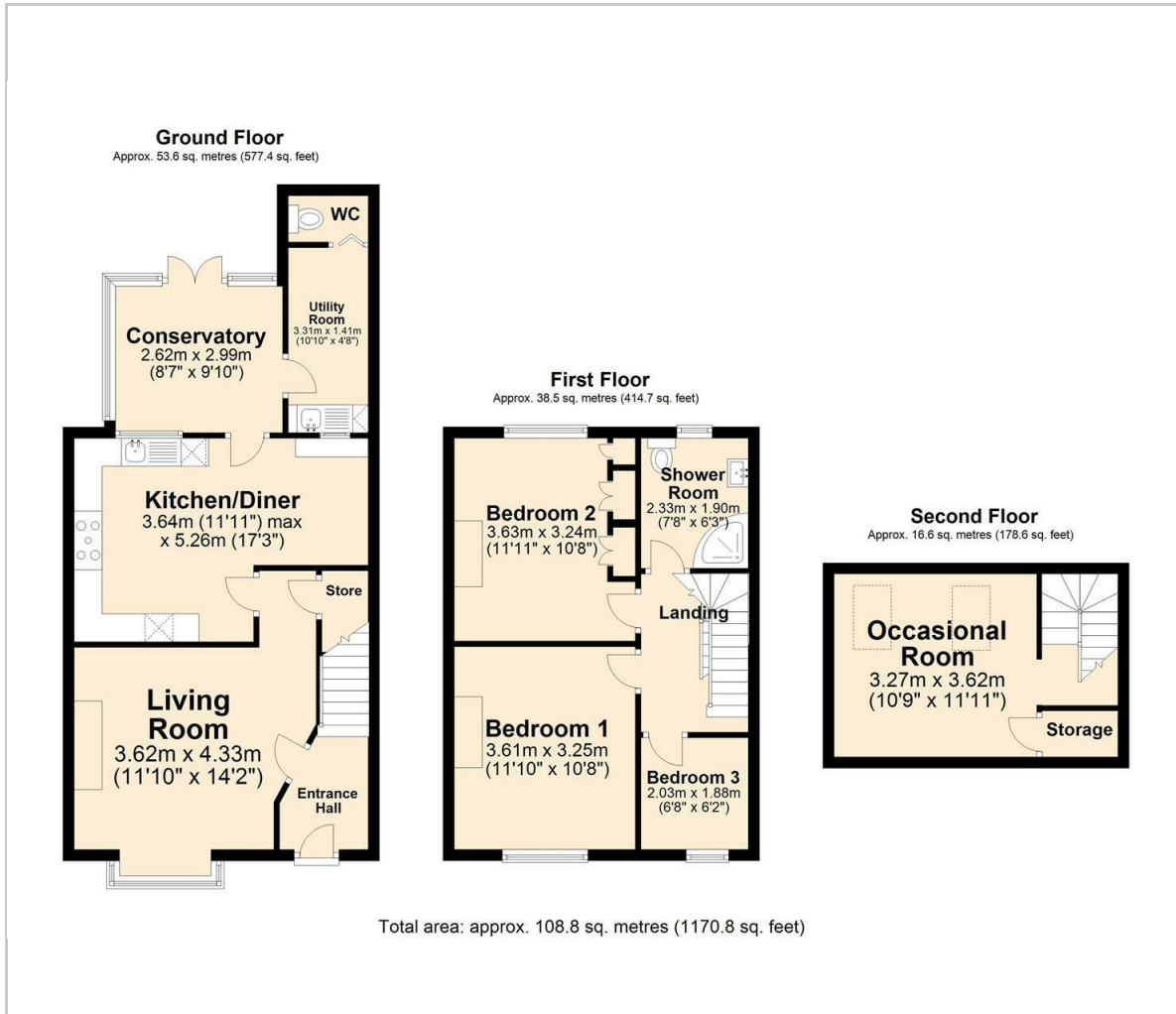
The first floor comprises; 2 double bedrooms, 1 single bedroom and shower room.

The second floor comprises; Occasional room.





Floor Plan



Viewing

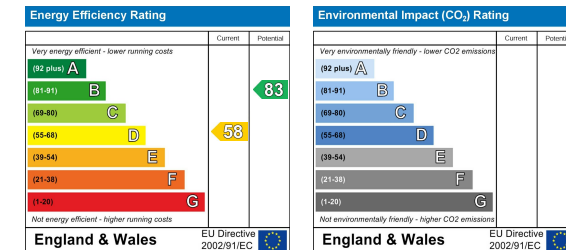
Please contact our Matlock Office on 01629 700246 if you wish to arrange a viewing appointment for this property or require further information.

These particulars, whilst believed to be accurate are set out as a general outline only for guidance and do not constitute any part of an offer or contract. Intending purchasers should not rely on them as statements of representation of fact, but must satisfy themselves by inspection or otherwise as to their accuracy. No person in this firm's employment has the authority to make or give any representation or warranty in respect of the property.

Area Map



Energy Efficiency Graph



2 Dale Road, Matlock, Derbyshire, DE4 3LT
T: 01629 700246



E: info@dalesandpeaks.co.uk
www.dalesandpeaks.co.uk