



Plot 23 Bentley Walk

Tansley, Matlock, DE4 5HQ

£275,000



Artist's impression

Plot 23 Bentley Walk

Tansley, Matlock, DE4 5HQ

The Henley + is a charming 3 bedroom home, full of character, style and space. With a great kitchen dining space at the heart of the home, this property delivers excellent living accommodation. The home achieves an EPC 'A' rating and comes complete with inbuilt solar panels and EV charging.

Located in the pretty village of Tansley, on the outskirts of Matlock, this beautiful development, built by renowned local home builder Stancliffe Homes, is surrounded by glorious Derbyshire countryside, on the edge of The Peak District National Park and within close proximity of a selection of local amenities.

The ground floor comprises; entrance hallway, open plan dining kitchen with ample storage, generous family lounge with patio doors to the rear garden.

The first floor comprises; 3 generously sized bedrooms including 2 double bedrooms and a single.

10 year build warranty.

Ground Floor

Lounge - 4.51m x 3.05m

Kitchen / Dining - 3.47m x 4.91m

WC - 1.76m x 0.90m

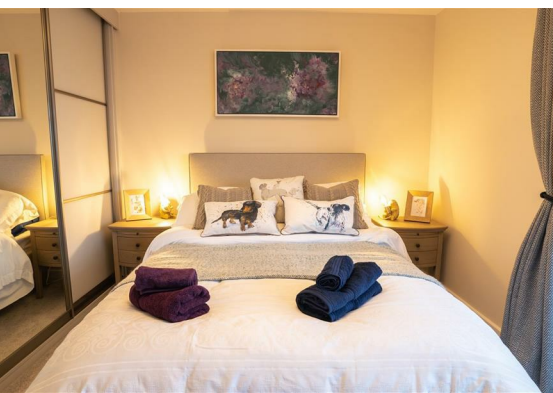
First Floor

Bedroom 1 - 6m x 2.62m

Bedroom 2 - 3.19m x 3.28m

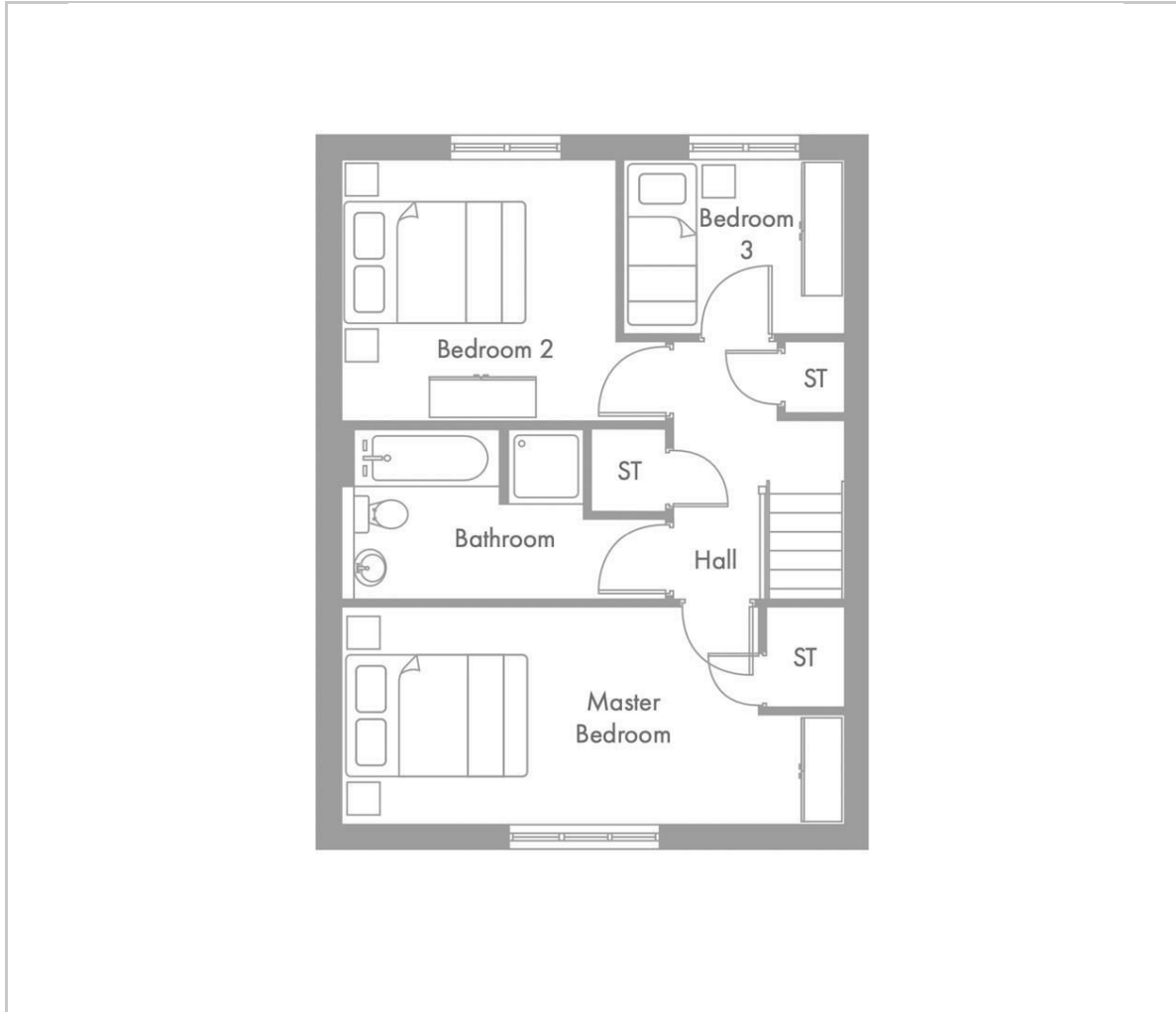
Bedroom 3 - 2.11m x 2.57m

Family Bathroom - 3.88m x 2.03m





Floor Plan



Viewing

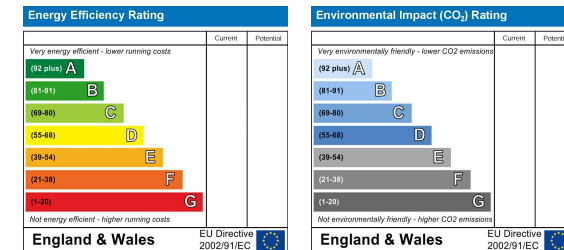
Please contact our Matlock Office on 01629 700246 if you wish to arrange a viewing appointment for this property or require further information.

These particulars, whilst believed to be accurate are set out as a general outline only for guidance and do not constitute any part of an offer or contract. Intending purchasers should not rely on them as statements of representation of fact, but must satisfy themselves by inspection or otherwise as to their accuracy. No person in this firm's employment has the authority to make or give any representation or warranty in respect of the property.

Area Map



Energy Efficiency Graph



2 Dale Road, Matlock, Derbyshire, DE4 3LT
T: 01629 700246

E: info@dalesandpeaks.co.uk
www.dalesandpeaks.co.uk