



DALES & PEAKS



## Valley View Slaley

Bonsall, Matlock, DE4 2BB

£490,000





## Valley View Slaley

Bonsall, Matlock, DE4 2BB

Enjoying an elevated position, this deceptively spacious 4 bedroom detached property offers 1587 sqft of bright and spacious living accommodation over two storeys. Stood in a plot of approx 0.5 acres, the property benefits from a beautifully landscaped rear garden with stunning countryside views, a stone outbuilding and ample off street parking.

The ground floor comprises; A modern island kitchen with integrated appliances, utility room with access onto the rear, downstairs WC, front aspect dining room with feature fireplace, dual aspect living room with a stunning brick fireplace and log burning stove.

The first floor comprises; Master bedroom with dressing area, 3 further well proportioned bedrooms and bathroom.

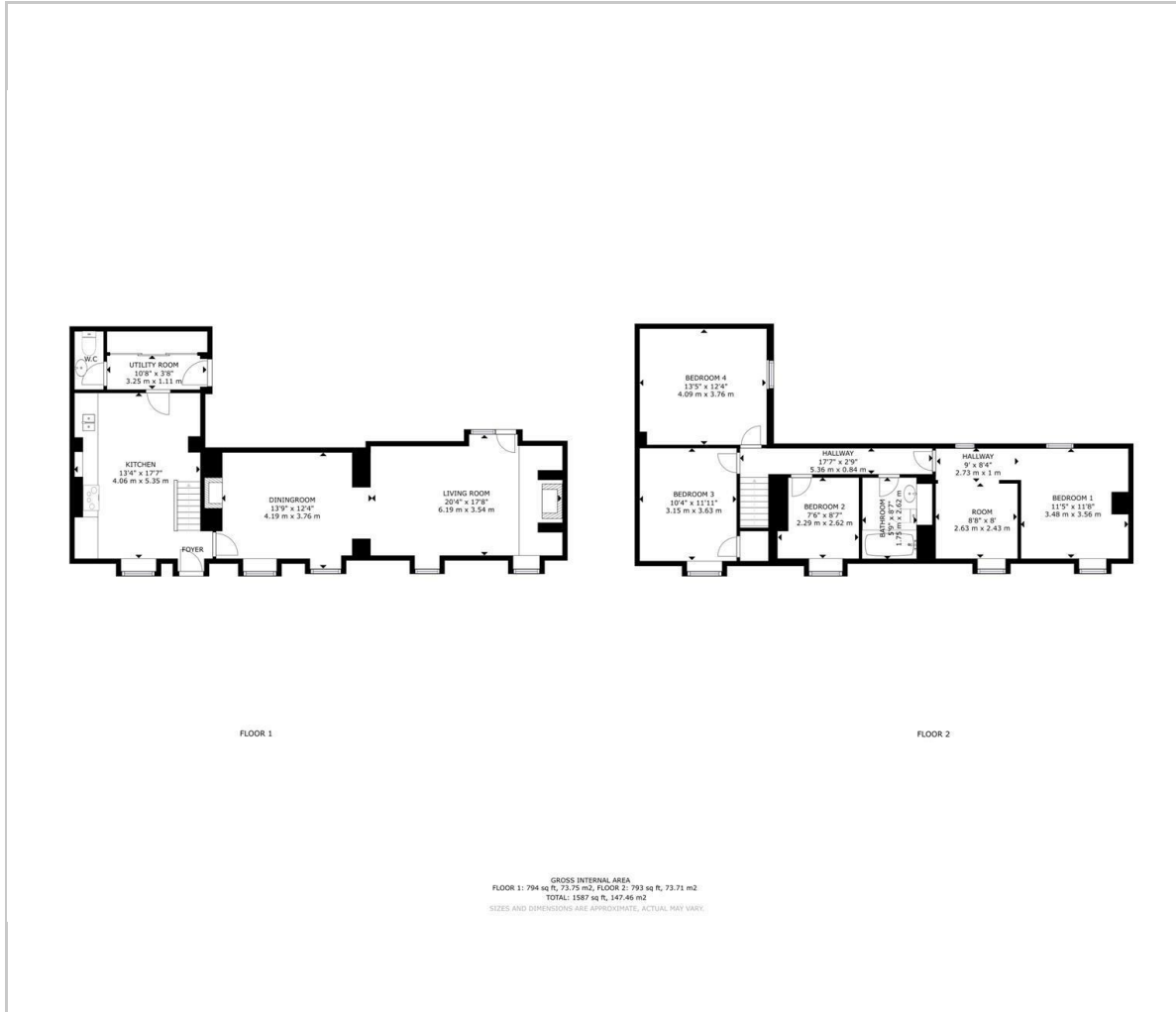








## Floor Plan



## Viewing

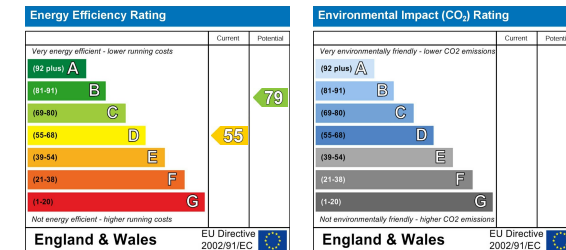
Please contact our Matlock Office on 01629 700246 if you wish to arrange a viewing appointment for this property or require further information.

These particulars, whilst believed to be accurate are set out as a general outline only for guidance and do not constitute any part of an offer or contract. Intending purchasers should not rely on them as statements of representation of fact, but must satisfy themselves by inspection or otherwise as to their accuracy. No person in this firm's employment has the authority to make or give any representation or warranty in respect of the property.

## Area Map



## Energy Efficiency Graph



2 Dale Road, Matlock, Derbyshire, DE4 3LT  
 T: 01629 700246



E: info@dalesandpeaks.co.uk  
 www.dalesandpeaks.co.uk