



**1 Carr View Dale Road North**  
Darley Dale, Matlock, DE4 2HY  
Guide Price £180,000

# 1 Carr View Dale Road

Darley Dale, Matlock, DE4 2HY

(Guide Price £180,000 - £190,000) A spacious and well presented 2 bedroom semi-detached period townhouse, offering 836 sqft of accommodation over three storeys. Set back from the road the property benefits from a rear garden, outdoor store and off road parking to the rear.

The ground floor comprises; living room with gas fire and open plan dining kitchen, utility room with access onto the rear garden, and downstairs bathroom.

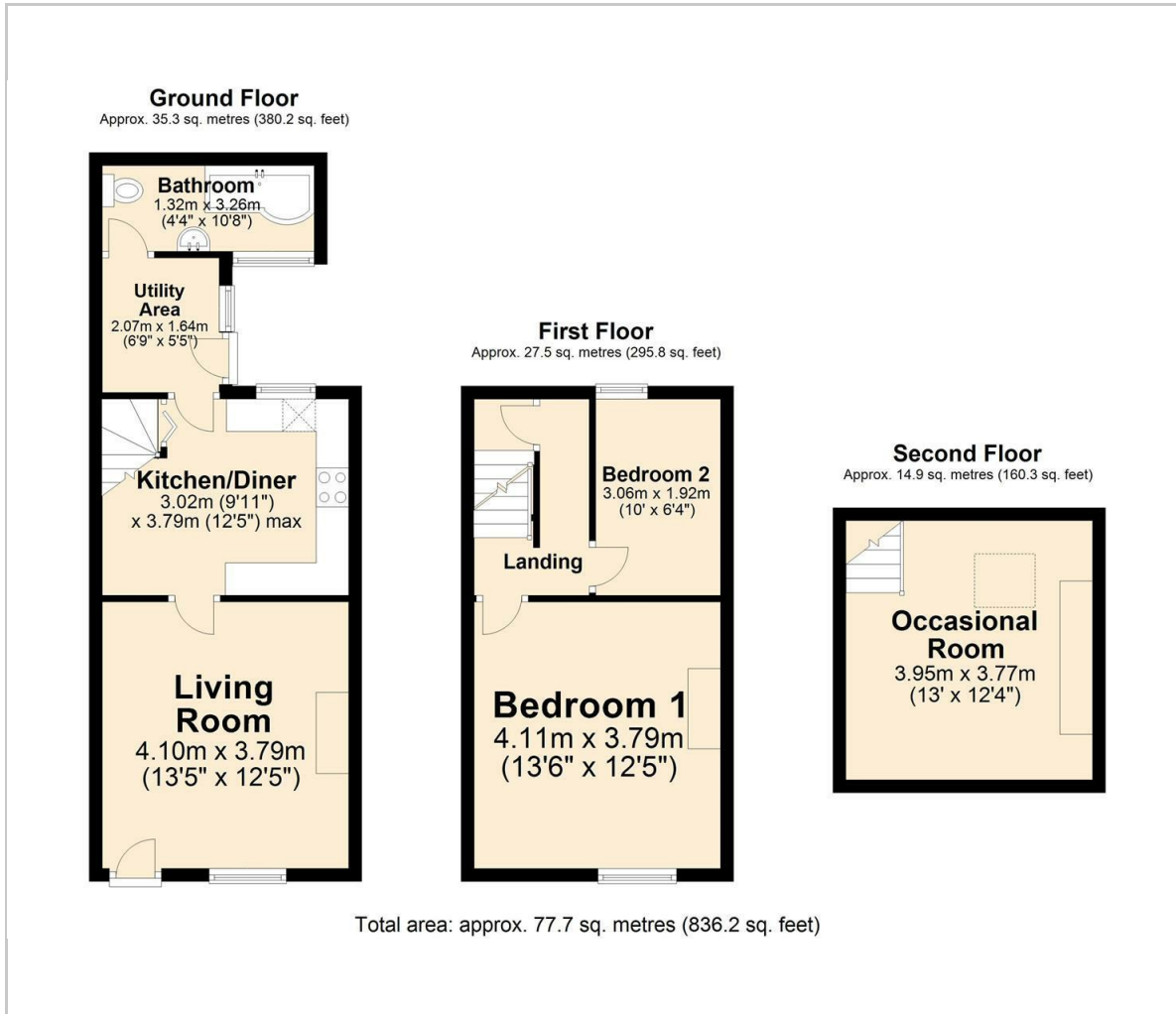
The first floor comprises; front aspect double bedroom and single bedroom.

The second floor comprises; generous occasional room.





## Floor Plan



## Viewing

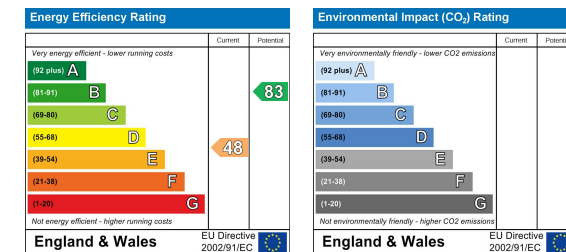
Please contact our Matlock Office on 01629 700246 if you wish to arrange a viewing appointment for this property or require further information.

These particulars, whilst believed to be accurate are set out as a general outline only for guidance and do not constitute any part of an offer or contract. Intending purchasers should not rely on them as statements of representation of fact, but must satisfy themselves by inspection or otherwise as to their accuracy. No person in this firm's employment has the authority to make or give any representation or warranty in respect of the property.

## Area Map



## Energy Efficiency Graph



2 Dale Road, Matlock, Derbyshire, DE4 3LT  
T: 01629 700246



E: info@dalesandpeaks.co.uk  
www.dalesandpeaks.co.uk